

Milwaukee Police Department

ANNUAL REPORT



Table of Contents

Milwaukee Police Department's Mission Statement	Page 2
Message from the Chief	Page 3
Command Staff Members	Page 4
Operations /Administration Commanders	Page 5
Organizational Charts	Pages 6-7
Citations	Page 8
Office of the Chief	Pages 9-10
Administration Bureau	Pages 11-15
Patrol Bureau	Pages 16-22
Criminal Investigation Bureau	Pages 23-25
Crime Statistics	Pages 26-31

The Mission of the



**Reduce Crime and
Enhance the Quality
of Life in the City
of Milwaukee.**

Message from the Chief

As my first complete year as Chief of Police ends, I am very pleased with the dedication and hard work demonstrated by members of the Milwaukee Police Department. The year 2004 was one of change as my Transition Team implemented a number of directives designed to increase our efficiency and effectiveness. Our organizational structure was modified to align the majority of the department under three distinct bureaus – the Administration Bureau, the Patrol Bureau, and the Criminal Investigation Bureau. Along with these changes, a number of sworn members who had been performing administrative duties were returned to street duty and a variety of unnecessary and labor-intensive reports were eliminated. I will continue to look for ways to streamline department operations.

One of my major goals of reducing violent crime was supplemented with the creation of the Gang Crimes Unit and Fugitive Apprehension Unit under the command of the Intelligence Division. These specialty units will concentrate on identifying gang members and reducing the illegal activity associated with them, as well as, apprehending individuals who are wanted on warrants or in violation of probation and parole. These specially trained officers will work cooperatively with district personnel and share information and intelligence with other investigative units.

As we move ahead with our technology updates, the records management system project is advancing. Our new computer aided dispatch system became operational on January 12, 2004. This major improvement within our Communications Division will help us dispatch squads and monitor our resources more effectively.



In September, I initiated a verified response to alarms policy, requiring an on-site person to verify an alarm before a squad is dispatched. This policy was met with resistance from alarm companies and protests from users, but I believe this change is in the best interest of the citizens of Milwaukee. Statistics indicate that 96% of alarms in Milwaukee during 2003 were false, resulting in over 13,000 personnel hours being lost. I am now placing the responsibility of verifying alarms with the alarm companies, not the police. This initiative will allow me to deploy resources in a more efficient and equitable manner.

Another priority of my administration, to improve our relationship with the community, will be strengthened with the assignment of two Community Liaison Coordinators. Sergeant Luis Gonzales and Sergeant Harold Hampton will work directly with me to address and mediate issues that arise in the community, usually involving minority constituencies. They will coordinate the Community Liaison officers at each district station and interact with the Community Services Division to improve communication and build trust with the community.

As the statistics enclosed in this annual report indicate, homicides are down, crimes have decreased, overtime has been reduced, and clearance rates have increased. This proves members of the Milwaukee police Department have been working hard to reduce crime and violence. I applaud their efforts and pledge to provide them with the support they need to continue making Milwaukee a safe and enjoyable city.

Charlotte H. Hegarty
Chief of Police

Command Staff

Chief of Police	Nannette H. Hegerty
Assistant Chief of Police	Joseph D. Whiten
Deputy Chief of Police – Patrol Bureau	Dale T. Schunk
Deputy Chief of Police – Criminal Investigation Bureau	Brian R. O’Keefe
Deputy Chief of Police – Administration Bureau’	Monica E. Ray
Inspector – Criminal Investigation Bureau	Steven Settingsgaard
Inspector – Data Services	Mark A. Meyer
Deputy Inspector – Police Academy	Ramon Galaviz
Deputy Inspector - Field Deputies Division	Oscar Perez
Deputy Inspector – Field Deputies Division	Vincent R. Flores
Deputy Inspector – Field Deputies Division	Gregory Thompson
Deputy Inspector- Administration	Raymond R. Sucik
Captain – District One	Linda Haynes
Captain – District Two	Eduardo Negron
Captain – District Three	Richard Oliva
Captain – District Four	Andra P. Williams
Captain – District Five	James C. Shepard
Captain – District Six	Gary L. Meyer
Captain – District Seven	Donald J. Gaglione
Captain – Professional Performance Division	Mary Hoerig
Captain – Community Services Division	James A. Galezewski
Captain – Central Records Division	Anthony Hendricks
Captain – Identification Division	Diana Rowe
Captain – Training Bureau	Charles W. Hargrove
Captain – Vice Control Division	Edward Liebrecht
Captain – Intelligence Division	Michael D. Young
Captain – Patrol Support Division	Anna Ruzinski
Captain – CIB – Homicide Division	Timothy Burkee
Captain – CIB – Crimes Against Persons Division	Darlene Jenkins
Captain – CIB – Crimes Against Property Division	Susan Edman
Captain – CIB –Early Shift	Eric J. Moore
Captain – CIB – Late Shift	Debra Davidoski
Captain – CIB – Sensitive Crimes Division	Denita R. Ball
Personnel Administrator	Valarie Watson
Administrative Lieutenant – Medical Section	Mercedes Cowan
Payroll Supervisor – Payroll Section	Joanne Bielinski
Chief’s Adjutant – Staff Assistant Senior	Heidi M. Hendricks
Budget and Administration Manager – Budget and Finance Division	Barbara Butler
Supervisor – Printing and Stores Section	Raymond C. Oelke
Building and Fleet Maintenance Manager	Gordon Gregg
Safety Director – Safety Division	Florence H. Dukes



Joseph D. Whiten
Assistant Chief of Police



Brian B. O'Keefe
Deputy Chief of Police



Monica E. Bay
Deputy Chief of Police



Dale T. Schunk
Deputy Chief of Police



Mark A. Meyer
Inspector of Police



Steven M. Pettingsgaard
Inspector of Police



Vincent B. Flores
Field Deputy Inspector of Police

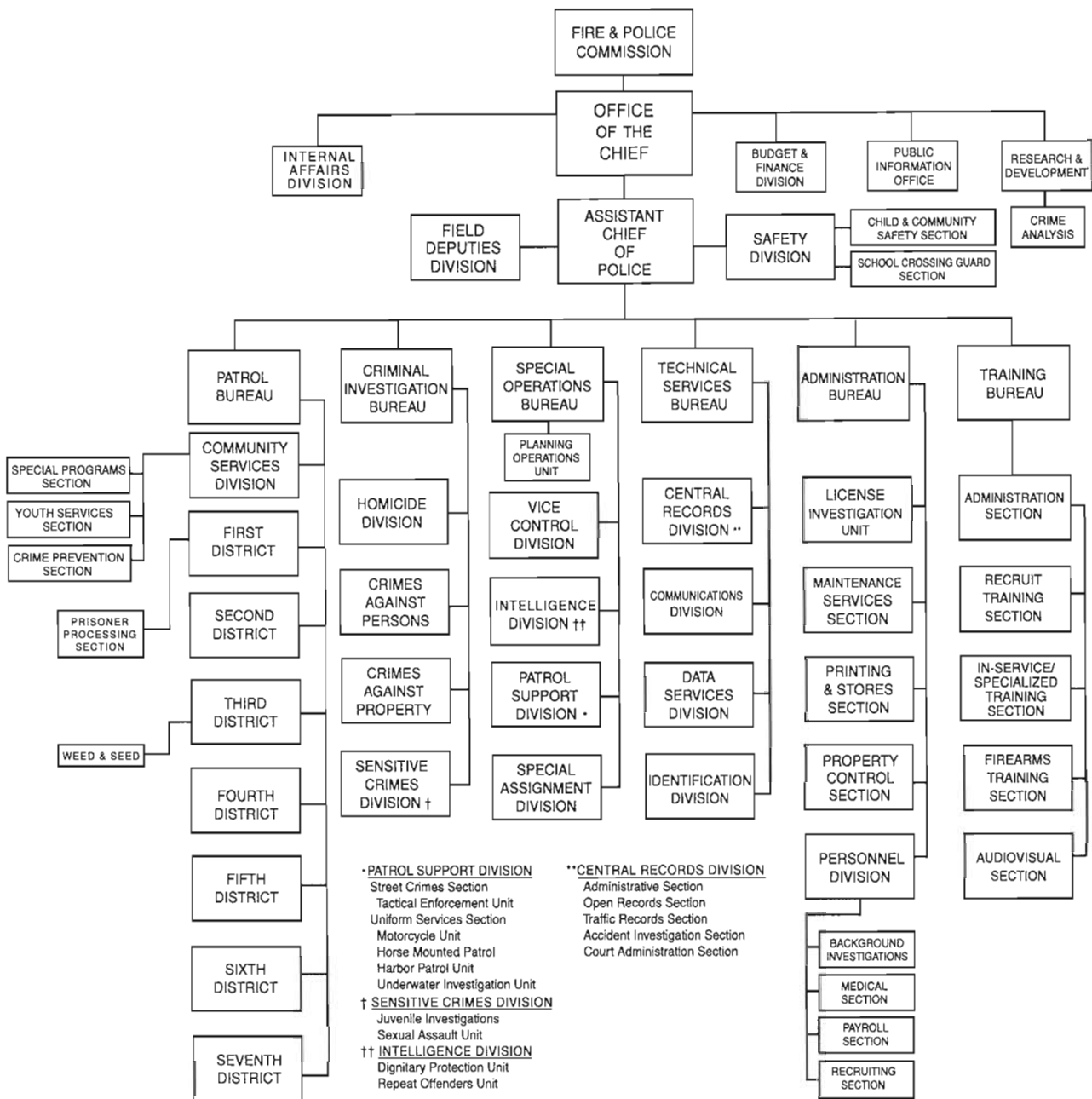


Oscar C. Perez
Field Deputy Inspector of Police



Gregory B. Thompson
Field Deputy Inspector of Police

Previous 2003 Organization Chart



In 2004 the organizational structure of the Milwaukee Police Department went through a major transition. The year started with the majority of the department divided into six bureaus. Many of the divisions and units that participated in joint operations were under the command of different bureaus, causing logistical delays in planning operations. The new organizational structure re-assigns the majority

of the department to three bureaus. The divisions and units that support each other and conduct joint operations have been assigned to the same bureaus. The result is more efficient logistical operations, better coordination between divisions and units, a faster response to major events that require joint operations, and more accountability.

Citations

"SERVICE ABOVE AND BEYOND THE CALL OF DUTY"

In 2004 the following department members were awarded a Class D Citation:

Police Officer Mark D. APRIESNIG- Rescued four citizens and his sergeant from a burning building.

Police Officer Jeffrey J. GRAMBOW- Captured a suspect with a gun who had fired upon upon officers.

Police Officer Daniel JOERS- Rescued four citizens and his sergeant from a burning building.

Sergeant Daniel J. WESOLDOWSKI- Rescued four citizens from a burning building.

In 2004 the following department members were awarded a Chief of Police Superior Achievement Award:

Police Officer Xavier J. BENITEZ- Disarmed a suicidal man with a knife.

Police Officer James P. COLLINS- Stopped a suicidal man from jumping off a bridge.

Police Officer Kurt D. KEZESKI- Stopped a suicidal woman from jumping off a bridge.

Sergeant Christopher J. LEHNER- Rescued a trapped citizen from a burning auto.

Police Officer Liam G. LOONEY- Rescued an unconscious citizen from a burning auto.

Sergeant Christopher R. MARSHALLI- Rescued a trapped citizen from a burning auto.

Sergeant Patrick J. O'DONNELL- Rescued an unconscious suicidal subject from a house filled with natural gas.

Police Officer Darren S. OLSON- Disarmed a suspect with a knife.

Police Officer Joseph F. PREBISH- Rescued a semi conscious citizen from a burning auto.

Sergeant Louis V. STATON- Disarmed a suspect with a knife

Detective Daniel P. THOMPSON- Captured an armed robbery suspect.

Police Officer Michael W. WAWRZONEK- Rescued a citizen being attacked by a pitbull.

Office of the Chief

THE OFFICE OF THE CHIEF CONSISTS OF THE PROFESSIONAL PERFORMANCE DIVISION, BUDGET AND FINANCE DIVISION, RESEARCH AND DEVELOPMENT AND THE PUBLIC INFORMATION OFFICE.

Professional Performance Division



Mary Hoerig
Captain of Police
Professional Performance Division

PPD YEARLY DATA COMPARISON

CATEGORY	2002	2003	2004
Total Number of Complaints	1,430	1,296	1,088
Total Number of Allegations	2,476	2,290	2,101

The Professional Performance Division is responsible for investigating allegations of misconduct on the part of members of the Police Department. The Division is also responsible for investigating civil claims made against members of the Department and administering the Department's drug testing program.

Research and Development

Members assigned to Research and Development perform a variety of staff functions for the Chief of Police. Some of those functions include drafting the

Department Rules and Standard Operating Procedures, research of police technology, administering the Applicant Review Committee and

research of proposed state legislation that may affect the Police Department.

Public Information Office

The Public Information Office (PIO) disseminates information to the public and interdepartmentally using memos, newsletters and electronic and print media. The PIO works to inform and educate Department members as well as the community relative to issues that may have an impact upon the Department and the citizens we serve. This office continually works to provide accurate and timely responses to inquiries.

Community Liaison Coordinators

Working to enhance the Milwaukee Police Department's relationship with the community, Police Chief Hegerty appointed Sergeants Harold T. Hampton and Luis Gonzalez Jr. as community liaisons. The sergeants work cooperatively with the community to address their concerns. In addition to resolving community issues, Sergeants Hampton and Gonzalez provide

useful tips to the community relating to the creation of block watch groups, organizing community meetings and working with the police department to reduce crime in their neighborhoods.

Office of the Chief

Budget and Finance Division

The Budget & Finance Section oversees the Department's accounting, budgeting and purchasing activities.

The Police Department relies on four sources of funding:

Asset Forfeiture Funds

Federal courts award 80% of the funds seized in drug-related arrests to the arresting department. The awarded funds may be spent on any law enforcement purpose subject to federal guidelines. The Milwaukee Police Department utilizes those funds to supplement operating expenditures in areas including training, tactical equipment and other specialized law enforcement needs.

Capital Projects

The City borrows money for large, one-time projects

The City's Operating Budget

The operating budget is the amount of the property tax supported budget that is allocated to the Police Department. Salaries and benefits account for 92% of this budget.

State and Local Grants

Other sources of funding are crucial to assist the Department and employees in completing their tasks safely and efficiently. With this in mind, the Department works continuously to acquire state, federal and private funding. Grant funds help the Department to obtain the latest in law enforcement technology, which improves overall effectiveness.

BUDGET AND FINANCE YEARLY DATA COMPARISON

CITY TAX-SUPPORTED OPERATING BUDGET

	2003 BUDGETED	2004 BUDGETED
Salary	\$120,087,582	\$129,572,402
Equip. Services, Supplies	\$ 11,495,922	\$ 11,503,006

NON-BUDGETED SOURCES OF FUNDS

	2003 BUDGETED	2004 BUDGETED
Capital Projects	\$ 4,571,793	\$ 6,510,000
Asset Forfeiture Funds	\$ 1,288,470	\$ 1,325,900
State/Local Grants (non-salary)	\$ 4,571,793	\$ 6,510,000
Total Department Funds	\$141,105,623	\$151,913,340

Administration Bureau

THE ADMINISTRATION BUREAU PROVIDES ADMINISTRATIVE SERVICES THAT SUPPORT THE DAILY FUNCTION OF THE POLICE DEPARTMENT. THE BUREAU IS COMPRISED OF THE FOLLOWING: PERSONNEL DIVISION, MEDICAL SECTION, PAYROLL SECTION, RECRUITING SECTION, CENTRAL RECORDS DIVISION, COMMUNICATIONS DIVISION, DATA SERVICES DIVISION, IDENTIFICATION DIVISION, POLICE ACADEMY, FACILITIES SERVICES DIVISION, PROPERTY CONTROL SECTION, PRINTING AND STORES, AND THE BACKGROUND INVESTIGATION SECTION. PERSONNEL ASSIGNED TO THE ADMINISTRATION BUREAU WORK CLOSELY WITH THE PATROL BUREAU AND THE CRIMINAL INVESTIGATION BUREAU TO PROVIDE A COORDINATED, EFFICIENT AND EFFECTIVE RESPONSE TO THE COMMUNITY.

Personnel Division

The Personnel Division is comprised of the Recruiting Section, Medical Section and Payroll Section. The division is charged with ensuring that the provisions of the various labor contracts covering Department members are properly administered. Staff assigned to the Personnel Division attend all contract negotiations and represent the Department at arbitration hearings, unemployment compensation hearings and other litigation forums. The Personnel Division processes all Department appointments, separations and leaves of absence.

Background Investigations Section

The Background Investigations Section investigates the background history of individuals that apply for employment with the Milwaukee Police Department. During 2004, a total of 242 background investigations were completed. The following investigations were conducted:

- 114 Police Officers
- 71 Police Aides
- 21 Office Assistants
- 20 Telecommunicators
- 7 Custodial Workers
- 5 Heating and Ventilating Technicians

- 2 Personnel Analyst Seniors
- 1 Public Relations Manger
- 1 Network Coordinator

Recruiting Section

The Recruiting Section is comprised of several officers who have been trained to work with the Fire and Police Commission to actively recruit potential candidates for employment with the Milwaukee Police Department. During 2004, the Recruiting Section coordinated and attended thirty-two events. Members visited forty-seven high schools, conducted numerous presentations regarding employment with the Police Department and provided interested candidates with applications for employment.

Medical Section

The Medical Section monitors the status of personnel on sick leave, injury leave, family medical leave and limited duty. Additionally, the Medical Section provides oversight of members regarding fitness for duty examinations, reasonable accommodations, emergency detentions and protective custody transportation and care.

Administrative Lieutenant Mercedes Cowan is currently working with

Marquette University on a cardiovascular research project that will compile data from law enforcement officers in an effort to determine if there is an association between the duties of law enforcement and cardiovascular heart disease.

Payroll Section

The Payroll Section oversees a \$5 million bi-weekly payroll. There are approximately 10,000 overtime cards processed bi-weekly.

This section is also responsible for open enrollment for health/dental and other benefits, administration of the Sick Leave Incentive Program (SLIP), flex time benefits, employment verifications including banking and state forms, and the processing of separation sheets for retirements, resignations, dismissals and leaves of absence. The Payroll Section is also tasked with updates to the HRMS system for all personnel transactions and the processing of retroactive payments for the negotiated contracts for the Milwaukee Police Association, Milwaukee Police Supervisors Organization, Association of Law Enforcement Allied Services Personnel and District Council 48.

Administration Bureau



Mark A. Meyer
Inspector of Police
Central Records Division

The Central Records Division is comprised of the Records Management Section, Open Records Section, and Traffic Records Section.

Records Management Section

The Records Management Section achieved the following accomplishments in 2004:

- In 2004, the Records Management Section successfully got the Intellinetics System on line throughout the entire Department. This system provides all Department members desktop access to all incident reports received in the Records Management Section. In 2004, the personnel at the Records Management Section entered all incoming 2004 incidents reports and entered the backlog reports from 2003 and 2000. They also made significant progress on entering the reports from 2001 and 2002.

Central Records Division

- On July 18, 2004, the Stolen Vehicle Desk was transferred from the Criminal Investigation Bureau to the Records Management Section. The stolen vehicle Desk takes live call-in auto theft reports with immediate entry into the CIB/NCIC Stolen vehicle File.
- The Incident Reporting Unit completed the mainframe data entry of 44,963 incident reports and 21,289 clearance reports. The unit entered 10,507 final dispositions.
- The Telephone Reporting Unit filed 19,255 incident reports.
- The Word Processing Unit transcribed 280,787 minutes of dictation resulting in 31,874 various reports for the Criminal Investigation Bureau members.
- The Records Management Section processed 4,795 new missing person records through CIB/NCIC.
- All sexual assault incident reports from 1996 through 2000 were copied and filed for permanent retention.
- All required Records management Section personnel were certified and re-certified in the Wisconsin Department of Justice TIME System.

Open Records Section

The Open Records Section is responsible for the compilation, review, and dissemination of Milwaukee Police Department records as mandated by Wisconsin State Statute pursuant to the Open Records Law. In 2004, the Section processed 28,721 requests, resulting in the release of 104,580 pages.

Traffic Records Section

In 2004, the Traffic Records Section successfully processed 101,997 traffic citations.

The following chart summarizes the Milwaukee Police Department traffic accident statistics for 2004, and compares them to the 2002 and 2003 statistics.

TRAFFIC ACCIDENT SUMMARY			
CATEGORY	2002	2003	2004
Persons Killed	35	25	47
Persons Injured	7,319	5,414	6,125
Fatal Accidents	34	19	46
Injury Accidents	4,793	3,656	4,133
PDO Accidents	13,586	10,606	11,626
Hit & Run Accidents	4,802	3,408	3,876
Total Accidents	18,379	14,460	15,824
Accident Report Requests	22,231	20,039	21,553

Administration Bureau

Communications Division

The personnel of the Communications Division answer and process incoming emergency, non-emergency and administrative telephone calls. They prioritize assignments and dispatch personnel to them. They monitor assignments, manage department resources being used at the assignments, and make the necessary notifications regarding updates and developments of assignments. They also monitor internal and external alarms, provide telephone and radio recordings needed as evidence, and process interdepartmental mail.

The Communications Division achieved the following accomplishments in 2004:

- January 12, 2004: moved into the new Communications Operations Center.

- Implemented a more comprehensive and modern computerized dispatch system.
- Implemented new call handling systems with enhanced supervisor capabilities.
- Initiated additional upgrades to the call center, to receive location information from 9-1-1 wireless calls.
- Performed detailed fleet mapping for new digital radio system.
- Participated in regional interoperability efforts for the southeast region of Wisconsin.
- Install wireless LAN system at 10 work locations
- Install radio consoles for Police and Fire Departments, and Alternate Dispatch Site.
- Completed bulk of new Mobile Data Computers in squads.
- Implemented 9-1-1 at alternate dispatch site.
- Implemented fiber optics at radio sites
- Licensed new radio system and developed next phase licensing mandated by FCC.

The Radio Shop accomplishments include:

- Install phase 1 of basic radio infrastructure for new Open Sky radio system

Data Services Division

The Data Services Division is responsible for the effective and efficient management of the Department's data communications/information systems. Personnel assigned to the division manage all Department computer production systems and provide technical and management support to all Department members. They also provide technical computer interface support of Department to Federal Bureau of Investigation, the National Crime Information Center, Wisconsin Crime Information Bureau, the Department of Transportation and the Criminal Justice Information System.

The Data Services Division achieved the following accomplishments in 2004:

- Department Wide Exchange

- Server/Email Implementation.
- Centralized Dial in/Dialup services (remote access server)
- Developed technical training profiles for support personnel.
- Centralized Roster Database links to Badgepro/Control Pro and Active Directory.
- Implemented Active Directory Redundancy- Additional Server/Windows 2000 Domain controller.
- Centralized Workstation Image Deployment in operation for all PCs.
- Full Tiburon CAD implementation completed.
- Centralized Authentication- Radius in place.
- Centralized Microsoft Systems update server.
- Security and Code Tables built for CMS, ARS and RMS
- MPD Intranet redesigned.
- Designed and set-up two additional computer training rooms at Police Academy.
- Designed and set-up a data wireless communication system at the Emergency Operations Center.
- Moved overtime card entry to City-Time System.

Administration Bureau

Identification Division

Identification Division personnel process, photograph, and collect various types of evidence including bodily fluids, fingerprints, footprints, and handwriting samples at crime scenes.

The Identification Division achieved the following accomplishments in 2004:

- 12,969 calls for service answered
- 5,109 latent cases were assigned to incidents, in which evidence was processed for fingerprint impressions. Evidence was recovered in 2,540 of the cases.
- 1,270 persons were identified from recovered fingerprint impressions.
- The fingerprints of 42,447 prisoners were processed and identified.
- Technicians took 126,695- 35mm photographs.
- The photo lab processed 160,512 images, including 33,817 digital images.
- 370 fingerprints on disputed Municipal Citations were compared, resulting in 280 instances in which someone other than the defendant was identified.
- 739 surveillance tapes were processed.
- 1,619 documents were examined, of which 603 included a hand writing examination.
- 3,736 persons were fingerprinted for licensing requirements.
- Acquired asset forfeiture funds for the transition to digital photography.
- The Identification Division budget was reduced by more than \$20,000 in comparison to 2003.

Police Academy



Ramon Galaviz
Deputy Inspector

The Police Academy is responsible for training all recruit officers and police aides, providing 32 hours of in-service training to all the sworn personnel within the Department, and providing specialized training to various units within the Department. The Police Academy maintains a liaison with the District Attorney's Office and the City Attorney's Office to assure that any required legal updates or modifications to the training are instituted in a timely manner. The Police Academy assigns, inspects, and monitors the firearms, equipment, and uniforms of all Department members.

In 2004, the Police Academy trained 117 newly hired Police Officers and 24 newly hired Police Aides. It trained and certified 39 new Field Training Officers and provided 4 days of in-service training to all sworn Department personnel. The Police Academy also provided specialized training programs on a wide range of topics such as Electronic Control Devices certification, intoximeter, child interviewing, supervision of police personnel, diversity, terrorism, and gang crimes. During the course of the year, the Police

Academy disseminated numerous officer safety bulletins to the districts and bureaus within the Department.

Community Services Division

The Community Services Division is located within the Police Academy. It is responsible for crime prevention training and education throughout the city, coordinating the Police Auxiliary program and Citizen Academy, and providing assistance to the district Community Liaison officers. The Community Services Division also provides personnel to assist in the recruiting efforts of the department.

In 2004, the Community Services Division made 194 personal appearances at various community events and gatherings, provided gang resistance training to 2,700 students, administered a 10-week Citizen Academy course, Community Emergency Response Team trained auxiliary police officers, developed and presented a block-watch training program to conform to national standards, assisted in the city's landlord training program (in Spanish and English), and provided robbery prevention training to convenience store employees.



Police Academy Building
6680 N. Teutonia Avenue, Milwaukee, WI 53209

Administration Bureau

Safety Division

The Safety Division is located within the Police Academy. It is responsible for educating the public in traffic and home safety, administering the defensive driving program and crossing guard program, as well as coordinating state and federal grants for traffic enforcement.

In 2004, the Safety Division administered 55 defensive driving classes with 1,000 participants; investigated and resolved 58 complaints involving the line of sight ordinance; conducted 142 traffic studies for school crossing guard protection; and distributed safety information to 214 elementary and 400 pre-schools. The Safety Division admin-

istered traffic safety grants for enforcement of laws relating to seat belt use, pedestrian violations and speed violations. The Safety Division distributed monthly safety newsletters, and implemented the Milwaukee Safe Routes Campaign to address safety issues around schools.

Facilities Services Division

The Facilities Services Division provides support for the Milwaukee Police Department building and fleet operations. This division services a fleet of 718 vehicles and maintains 15 buildings with a combined square footage in excess of 877,000 square feet.

In 2004, the Facilities Services Division accomplished the following:

- Reduced vehicle fleet maintenance costs by \$101,304.12. The total cost for fleet maintenance in 2004 was

\$1,466,979.54 compared with \$1,568,283.00 in 2003. The annual fleet maintenance costs have been reduced by more than \$1,051,304.12 in an ongoing effort over the last five years.

- Restitution recovery for damages sustained to both Police Department vehicles and property totaled \$128,272.34. The amount billed collectable by other agencies in 2004, including court orders was \$248,694.28. In four years, this program has generated over \$1,529,231.28

in court ordered restitution.

- Installation of all new windows and doors at District Four.
- District Police Stations Four, Six and Seven all had updates to their general office area, including painting and new office furniture.

The Department continues to save over \$80,000 annually by out-sourcing the set-up of new uniform and unmarked police vehicles.

Patrol Bureau

IN THE BEGINNING OF 2004, THE PATROL BUREAU CONSISTED OF THE SEVEN DISTRICT STATIONS AND THE COMMUNITY SERVICES DIVISION. WITH THE IMPLEMENTATION OF THE DEPARTMENT'S NEW ORGANIZATIONAL STRUCTURE, THE COMMUNITY SERVICES DIVISION, WHICH IS LOCATED AT THE SAFETY ACADEMY, BECAME PART OF THE ADMINISTRATION BUREAU AND A SUBCOMPONENT OF THE POLICE ACADEMY. THE PATROL SUPPORT DIVISION, WHICH INCLUDES THE ACCIDENT RECONSTRUCTION UNIT, MOTORCYCLE UNIT, MOUNTED PATROL UNIT, HARBOR PATROL UNIT, TACTICAL ENFORCEMENT UNIT, AND UNDERWATER INVESTIGATION UNIT, BECAME PART OF THE PATROL BUREAU. THE TRANSFERRING OF THE PATROL SUPPORT DIVISION FROM THE FORMER SPECIAL OPERATIONS BUREAU TO THE PATROL BUREAU ALLOWS THE DISTRICT STATIONS AND THEIR OFFICERS TO WORK MORE EFFICIENTLY WITH THE OFFICERS ASSIGNED TO THE SPECIALTY UNITS OF THE PATROL SUPPORT DIVISION. THE DISTRICT STATIONS AND PATROL SUPPORT DIVISION NOW COORDINATE THEIR EFFORTS WITHIN ONE BUREAU, REDUCING THE LOGISTICAL OPERATIONS AND PROVIDING A FASTER COORDINATED RESPONSE TO MAJOR EVENTS, SERIOUS ACCIDENTS, AND TACTICAL SITUATIONS.



Dale T. Schunk
Deputy Chief of Police
Patrol Bureau

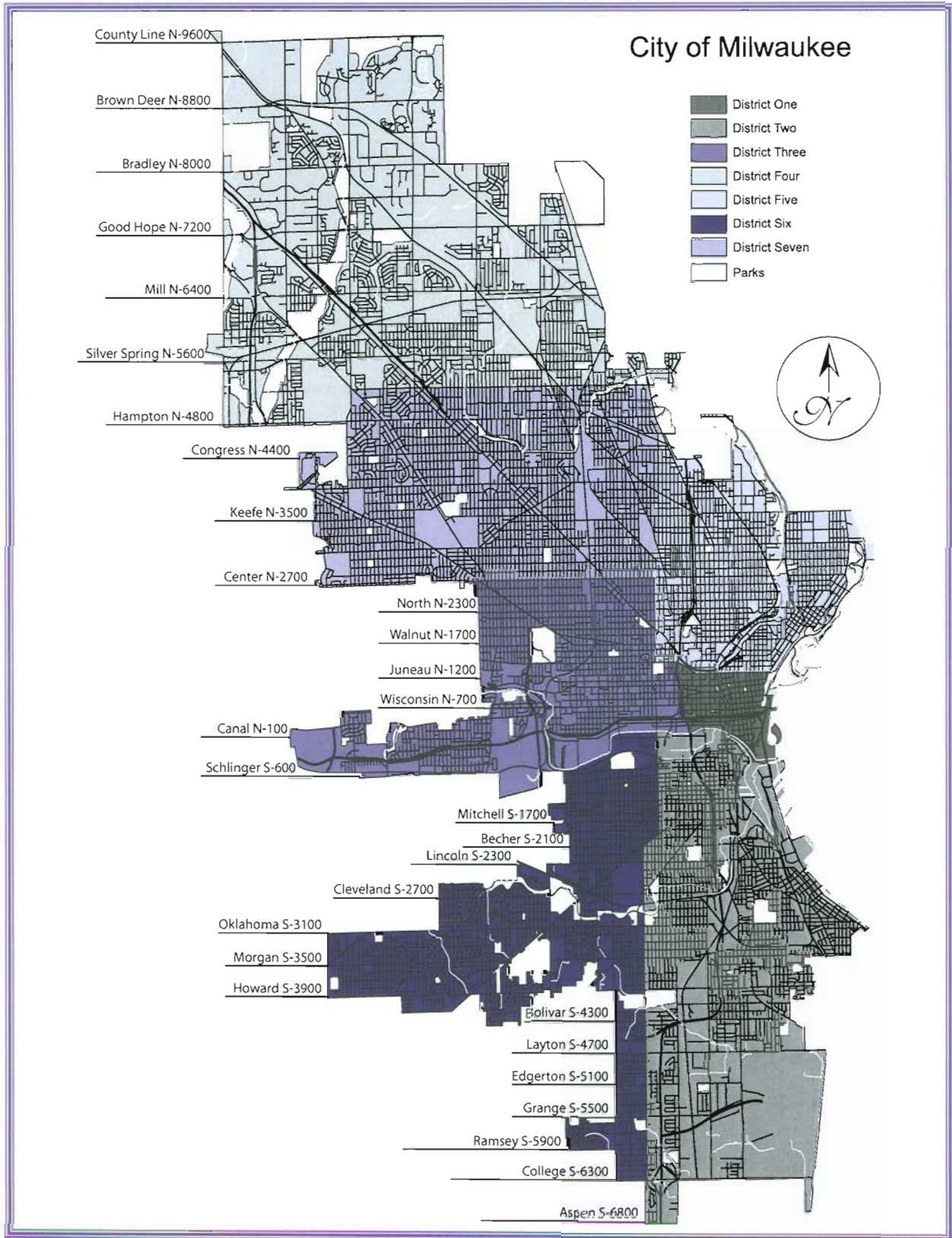
Planning and Operations Unit

The Planning and Operations Unit is responsible for the planning, logistics, and staffing of police personnel for all special events in the City of Milwaukee. These events include Summerfest, U.S. Bank fireworks, presidential motorcades, numerous ethnic festivals, parades and runs/walks. The unit planned and arranged police coverage for 219 special

events utilizing 37,891 work hours, and 1,075 daily events in 2004. There were 29 special events related to the 2004 presidential election, encompassing visits by President George Bush, Vice President Richard Cheney, and their wives; and Senator John Kerry, Senator John Edwards, and their wives.

Patrol Bureau

Milwaukee Police District Boundaries



Patrol Bureau

District One



Linda Haynes
Captain of Police

District One is located within the Police Administration Building at 749 W. State St. In 2004, Captain Linda Haynes was the commander of District One.

The officers of District One are charged with policing the downtown area of Milwaukee. The downtown area has many unique features, which the officers have to take into consideration

when performing their duties. The District staff often has to coordinate joint operations with the specialty units of the Patrol Support Division, other agencies and businesses outside of the department.

District One has a tremendous amount of commuters entering and leaving during morning and evening rush hours. The federal, state, and municipal courts are located within the District. State, county, and municipal prisoner holding facilities are located in the District. There are multiple major sports venues, including the Bradley Center, where the Milwaukee Bucks, Admirals, and Marquette Golden Eagles play, and the US Cellular Arena, where the UW Milwaukee Panthers play. There are several fine arts venues, a portion of the Summerfest grounds, a portion of Lake Michigan frontage, and a large restaurant and nightclub area.

The officers assigned to District One responded to 6,750 calls for service in 2004. They responded to 1,515 priority 1 calls, 2,045 priority 2 calls, 2,831 priority 3 calls, and 349 priority 4 calls.

Making downtown Milwaukee a safe place for people is a priority for the personnel at District One. No homicides occurred in the district during 2003 or 2004.



District One / Police Administration Building

District Two



Eduardo Negron
Captain of Police

District Two is located at 245 W. Lincoln Ave. In 2004, Captain Eduardo Negron was the commander of District Two.

The officers of District Two are charged with policing the southeastern areas of the City of Milwaukee. The district has

borders with 3 other municipalities: Saint Francis, Cudahy, and Oak Creek. It has the largest portion of Lake Michigan frontage, a portion of the Summerfest grounds, the Milwaukee Harbor, and General Mitchell International Airport.

The District Two officers and staff have to maintain a working relationship with the law enforcement agencies that border the district, as well as with the Milwaukee County Sheriffs Department, which maintains security at the airport. The officers and staff often have to coordinate joint operations with the Patrol Support Division and other agencies to provide effective coverage of the many festivals and events at the Summerfest grounds and along the southern Lake Michigan shoreline in Milwaukee. They have also been called upon to coordinate

outer perimeter security, and traffic/crowd control relating to dignitaries arriving at the airport.

The officers of District Two responded to 39,296 calls for service in 2004. They responded to 9,728 priority 1 calls, 10,206 priority 2 calls, 14,849 priority 3 calls, and 4,513 priority 4 calls.



District Two
245 W. Lincoln Avenue, Milwaukee, WI 53207

Patrol Bureau



Richard Oliva
Captain of Police

District Three is located at 2333 N. 49 Street. In 2004, Captain Richard Oliva was the commander of District Three.

The officers at District Three are charged with policing a large portion of the central and western areas of the City of Milwaukee. The district has borders with 2 other municipalities: West Allis, and Wauwatosa. Miller Park (home of the Milwaukee Brewers), the

District Three

Milwaukee County Zoo, a portion of the Wisconsin State Fair Park, Marquette University, and the Clement J. Zablocki Veterans Affairs Medical Center are all located in the district. The district is also the closest to Froedtert Hospital, which has the only #1 rated trauma unit in the area.

The District Three officers and staff have to maintain a working relationship with the law enforcement agencies that border the district, with the federal officers that maintain security at the Clement J. Zablocki Veterans Affairs Medical Center, with the Wisconsin State Fair Park Police and with the Marquette University Public Safety Officers. The officers are often the first dispatched to respond to the Froedtert Hospital trauma and emergency room when a victim of a violent crime is admitted and the location of the related crime had not been determined.

The officers of District Three responded to 49,917 calls for service in 2004. They responded to 15,403 priority 1 calls, 12,326 priority 2 calls, 18,322 priority 3 calls, and 3,866 priority 4 calls.

In 2003, more homicides occurred in District Three than in any other police district in the City of Milwaukee. In 2004, District Three had the largest reduction in homicides, a 53.33% reduction.



District Three

2333 North 49th Street, Milwaukee, WI 53210

District Four



Andra P. Williams
Captain of Police

District Four is located at 6929 W. Silver Spring Dr. In 2004, Captain Andra P. Williams was the commander of District Four.

The officers at District Four are charged with policing the northwestern area of the City of Milwaukee. This district is geographically the largest police district in the City of Milwaukee. It has the most wooded areas and the most parks and parkways running parallel to waterways. Timmerman Air Field is located in the district. The district has borders with 6 other municipalities: Mequon, Glendale, Menomonee Falls, Wauwatosa, Butler, and Brown Deer. The officers and staff have to maintain a good working relationship with all the law enforcement agencies that border the district and with the Milwaukee County Sheriff's Department, which maintains security at Timmerman Air Field.

The officers of District Four responded to 41,143 calls for service in 2004. They responded to 11,052 priority 1 calls, 10,454 priority 2 calls, 15,478 priority 3 calls, and 4,159 priority 4 calls.



District Four

6929 W. Silver Spring Dr., Milwaukee, WI 53218

Patrol Bureau



James Shepard
Captain of Police

District Five

District Five is located at 2920 N. 4 Street. In 2004, Captain James Shepard was the commanding officer at District Five.

The officers of District Five are charged with policing the northeastern area of the City of Milwaukee. The district has borders with 3 other municipalities: Shorewood, Whitefish Bay, and Glendale. It has a large portion of Lake Michigan frontage, which includes the McKinley Marina. The University of Wisconsin Milwaukee campus is located in District Five. The officers and staff at District Five have to maintain a good working relationship with the law enforcement agencies that border the district and with the UW Milwaukee Police Department.

The officers of District Five responded to 48,016 calls for service in 2004. They responded to 14,040 priority 1 calls, 11,954 priority 2 calls, 17,561 priority 3 calls and 4,461 priority 4 calls. great place to live, work and recreate.



District Five

2920 North 4th Street, Milwaukee, WI 53212

District Six



Gary Meyer
Captain of Police

District Six is located at 3006 S. 27 Street. In 2004, Captain Gary L. Meyer was the commander of District Six.

The officers of District Six are charged with policing the southwestern area of the City of Milwaukee. The district has borders with 5 other municipalities: West Allis, West Milwaukee, Greenfield, Franklin, and Oak Creek. The district has a large number of people visiting the Potawatomi Indian Casino. The officers and staff of the district have to maintain a good working relationship with the law enforcement agencies that border the district and with the security and staff of the Potawatomi Indian Casino.

The officers of District Six responded to 33,561 calls for service in 2004. They responded to 8,143 priority 1 calls, 8,766 priority 2 calls, 12,985 priority 3 calls and 3,667 priority 4 calls.



District Six

3006 South 27th Street, Milwaukee, WI 53215

Patrol Bureau



Donald Gaglione
Captain of Police

District Seven

District Seven is located at 3626 W. Fond Du Lac Avenue. In 2004, Captain Donald J. Gaglione was the commanding officer at District Seven.

The Officers of District Seven are charged with policing a large portion of the central area of the City of Milwaukee. The district borders with one other municipality: Wauwatosa. It is the most populated police district in the city, and shares borders with Districts Three, Four, and Five. The district has numerous major state highway thoroughfares running through it. The officers and staff maintain a good working relationship with personnel from the Wauwatosa Police Department, and often have to coordinate efforts with personnel from Districts

Three, Four, and Five, due to criminal activity that occurs across district borders.

The officers of District Seven responded to 68,742 calls for service in 2004, more than any other police district in the City of Milwaukee. They responded to 21,676 priority 1 calls, 17,153 priority 2 calls, 24,423 priority 3 calls, and 5,490 priority 4 calls.



District Seven

3626 W. Fond Du Lac Ave., Milwaukee, WI 53216

MILWAUKEE POLICE CALLS FOR SERVICE

JANUARY 12, 2004 TO DECEMBER 31, 2004

	1	2	3	4	TOTAL
DISTRICT 1	1,515	2,045	2,831	349	6,750
DISTRICT 2	9,728	10,206	14,849	4,513	39,296
DISTRICT 3	15,403	12,326	18,322	3,866	49,917
DISTRICT 4	11,052	10,454	15,478	4,159	41,143
DISTRICT 5	14,040	11,954	17,561	4,461	48,016
DISTRICT 6	8,143	8,766	12,985	3,667	33,561
DISTRICT 7	21,676	17,153	24,423	5,490	68,742
TOTAL	81,557	72,904	106,449	26,515	287,425

Patrol Bureau

Patrol Support Division

During calendar year 2004, the Patrol Support Division performed city-wide specialized patrol functions in the following areas:

Tactical Enforcement Unit

1. Brought fifteen high-risk (S.W.A.T.) situations, including armed suicidal and barricaded suspects, to a peaceful resolution.
2. Executed 159 medium and high risk search warrants.
3. Provided field patrol/saturation to specific areas of the city experiencing violent crime.

Motorcycle Unit

1. Provided traffic enforcement & education, issuing over 34,000 citations.
2. Provided traffic control for 1,266 special events, including parades, festivals,

charity run/walks, etc.

3. Escorted 29 dignitary motorcades relating to the 2004 Presidential election.

Harbor Patrol Unit

1. Provided on-water patrol to over 960 square miles of the navigable waterways on Lake Michigan and rivers throughout the City.
2. Performed 37 search-and-rescues, including stranded boaters, persons overboard, and vessels aground or adrift.
3. Provided water safety enforcement & education, issuing 232 citations for maritime ordinance violations.

Mounted Patrol Unit

1. Provided high-visibility mounted horse patrol in the downtown area and near the Marquette University campus.

2. Performed crowd control duties at various special events within the City, providing orderly and safe crowd movement.

Accident Reconstruction Unit

1. The Unit investigated 290 serious motor vehicle accidents. Specially trained investigators re-construct the dynamics of the accident to determine pre-impact speed of the vehicles, as well as pre and post crash events, based on physical evidence.

Underwater Investigation Unit

1. Conducted 15 dive operations/ underwater searches for criminal evidence (human bodies, weapons, and explosives).
2. Conducted underwater safety sweeps to facilitate site and route security relating to the 2004 Presidential election.

Criminal Investigation Bureau

THE CRIMINAL INVESTIGATION BUREAU IS COMPRISED OF THE HOMICIDE, CRIMES AGAINST PERSONS, CRIMES AGAINST PROPERTY, INTELLIGENCE DIVISION, SENSITIVE CRIMES DIVISION AND VICE CONTROL DIVISION. THESE SEPARATE BUT UNIFIED DIVISIONS INVESTIGATE AND MANAGE THE CRIMINAL CASES IN THE CITY OF MILWAUKEE IN THEIR RESPECTIVE AREAS OF RESPONSIBILITY.



Brian O. Keefe
Deputy Chief of Police
Criminal Investigation Bureau



Steven P. Pettingsgaard
Inspector of Police
Homicide Division

Homicide Division

During 2004, the Homicide Division investigated 88 homicides and cleared 59. The Uniform Crime Report clearance rate for 2004 was 80.7%. The Homicide Division's UCR clearance rate remains well above the national average.

HOMICIDE MONTHLY TOTAL

MONTH	1999	2000	2001	2002	2003	2004
January	11	11	16	6	9	5
February	14	13	4	9	4	7
March	9	7	8	7	6	7
April	10	11	7	10	11	6
May	14	6	8	12	8	8
June	5	12	18	6	9	10
July	14	12	13	13	10	10
August	11	9	12	8	12	5
September	7	17	9	12	12	5
October	7	7	11	11	7	7
November	16	9	8	10	10	9
December	6	7	13	4	9	9
TOTAL HOMICIDES	124	121	127	108	107	88
TOTAL YEAR CLEARED	83	86	95	71	72	59
TOTAL PRIOR YEARS CLEARED	18	12	11	14	13	12
TOTAL CLEARANCE	101	98	106	85	85	71
UCR CLEARANCE RATE	82%	81%	82%	79%	79%	81%

HOMICIDES BY DAY OF THE WEEK

DAY OF THE WEEK	1999	2000	2001	2002	2003	2004
Sunday	19	18	22	21	19	13
Monday	15	14	13	10	11	9
Tuesday	21	9	25	17	10	10
Wednesday	13	19	11	6	14	12
Thursday	11	11	19	16	15	5
Friday	27	20	18	18	13	13
Saturday	18	30	19	20	25	26
TOTAL	124	121	127	108	107	88

Criminal Investigation Bureau

VICTIMOLOGY BY GENDER

GENDER	1999	2000	2001	2002	2003	2004
Male	104	99	104	88	90	74
Female	20	22	23	20	17	14
TOTAL	124	121	127	108	107	88

HOMICIDES BY DISTRICT

DISTRICT	1999	2000	2001	2002	2003	2004
One	1	0	3	1	0	0
Two	12	11	16	13	12	17
Three	35	19	35	17	30	14
Four	8	6	9	11	10	7
Five	17	36	20	35	19	16
Six	12	14	11	3	9	7
Seven	39	35	33	28	27	27
TOTAL	124	121	127	108	107	88

Crimes Against Persons Division

The Crimes Against Persons Division investigated 2,816 robberies compared to 2,959 robberies during 2003. During 2004, 822 robbery incidents were cleared. There were 3,568 gun related offenses as compared to 3,679 gun related offenses during 2003.

Crimes Against Property Division

The Crimes Against Property Division is responsible for investigating all robberies and felony assaults that occur in the city. This includes property crimes such as burglary, financial crimes, motor vehicle theft and fire investigations.

During 2004, the division investigated 4,531 burglaries compared to 6,041 in 2003, this represents a 25% reduction

in burglary offenses. 2,816 robberies were reported and 822 of those incidents were cleared. The division created a High Tech Unit which executed 38 search warrants and arrested 118 suspects. Members assigned to the White Collar Crimes Unit investigated numerous commercial crimes, as well as, cases of embezzlement and identity theft.

The Arson Unit investigated 1,643 fires in which 262 were determined to be arson.

Officers assigned to the Auto Squad focused on organized vehicle theft as well as providing the community with information regarding auto theft prevention.

Intelligence Division

The year 2004 was a year of transition for the Intelligence Division. The Division transformed from a unit that was primarily tasked with intelligence development and analysis to a unit tasked with dismantling criminal street gangs and the apprehension of felons, many who illegally carry firearms. The division became much more involved in the Milwaukee Police Department's efforts to combat the sources of violent crime. The division was part of the organizational restructuring that was developed and implemented throughout

2004 and completed early in 2005. The division was transferred from the Special Operations Bureau to the Criminal Investigation Bureau. On May 1, 2004, the Gang Crimes Unit, the Warrant Unit, and the Crime Analysis Section were added to the Intelligence Division.

The Intelligence Division coordinated a team effort to combat violent crime. The division exchanged information and worked closely with Anti-Gang Unit officers assigned to Districts 2-7, the Vice Control Division, HITDA, the FBI, the District Attorney, and the US Attorney.

This team effort led to the issuance of numerous search and arrest warrants. In 2004, the Intelligence Division assisted HITDA in the dismantling of two major criminal street gangs and recovered 465 firearms out of the total 2,427 firearms seized by the Department. Members assigned to the Intelligence Division obtained 99 search warrants to further our gang and illegal firearms investigations.

Members assigned to the Warrant Unit and the Gang Crimes Unit arrested 1,972 individuals in 2004. Many of

Criminal Investigation Bureau

these individuals were wanted on felony warrants or had recently committed a violent crime such as homicide, weapon offenses, robbery, or sexual assault. The rapid apprehension of those individuals removes the opportunity to inflict more violence on our community.

The Major Violators Program (MVP) was initiated by the Intelligence Division. Information was solicited from

all Milwaukee County law enforcement entities to identify those individuals who were committing the majority of the violent crime in our city. Sixteen individuals were identified. Each detective assigned to the division became responsible for an individual identified as a major violator. When one of these individuals was arrested, the Intelligence Division detective would

assist the arresting officers in putting together the strongest case against the individual. The detective would also assist with the presentation of the case in the District Attorney's Office. The District Attorney of Milwaukee County endorses this program and has assigned one prosecutor to be responsible for these MVP cases.

Sensitive Crimes Division

The Sensitive Crimes Division is comprised of the Sexual Assault, Family Violence, Crimes Against Children and the Cold Hit Units. During 2004, the Sexual Assault Unit investigated 1,004 sexual assaults. The Milwaukee Police Department achieved a 91% clearance rate for rape, compared to the national average of 48%.

Truancy Abatement Burglary Suppression (TABS) officers had contact with 12,446 juveniles, of which 5,849 were truants. The TABS officers cleared 63 missing person reports, served 157 arrest warrants, issued 353 non-truancy related municipal citations and confiscated 8 weapons.

MISSING PERSONS INVESTIGATIONS

DISTRICT	ADULT MALE	ADULT FEMALE	JUVENILE MALE	JUVENILE FEMALE	TOTAL 2004
One	0	2	1	2	5
Two	26	19	148	309	502
Three	36	31	335	350	752
Four	32	46	363	404	845
Five	29	25	233	322	609
Six	19	20	144	196	379
Seven	50	53	428	693	1224
TOTAL	192	196	1652	2276	4316

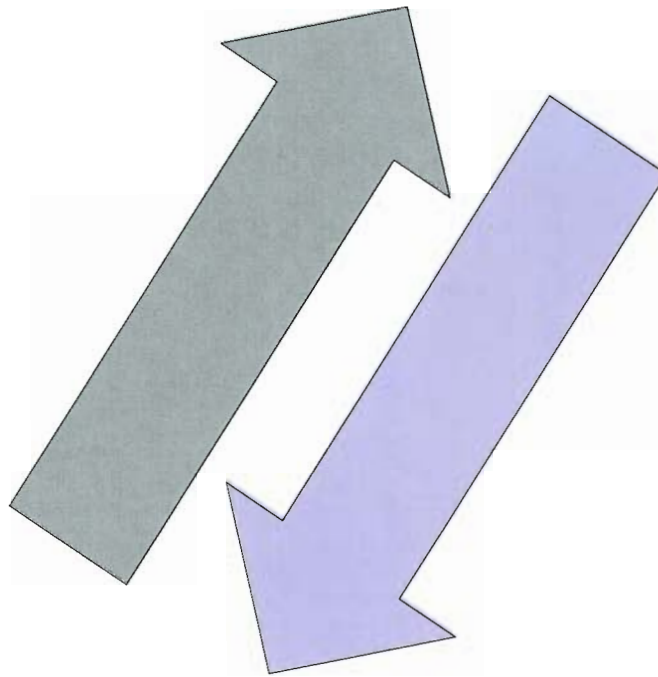
Vice Control Division

Members assigned to the Vice Control Division seized \$2,900,868.49 in U.S. currency, 564 firearms and 18 motor vehicles. One hundred twenty-seven search warrants were executed. A total of 6,476 persons were arrested during drug related investigations. Additionally, there were 1,024 prostitution related charges issued.

2004 VICE CONTROL DIVISION DRUG SEIZURES

SUBSTANCE	2003	2004	% of CHANGE
Cocaine	31,499	46,545	+48%
Cocaine Base	23,811	21,028	-12%
Marijuana	441,866	834,913	+89%
Heroin	1,148	1,338	+17%
Ecstasy	272	745	+174%
All Other Drugs	3,492	7,059	+102%

THE MILWAUKEE POLICE DEPARTMENT



Quality of Life Statistical Comparison

for the 4th quarter of 2003-2004

Crime Statistics

Quality of Life Comparison for the 4th Quarter 2004 - 2003

2004

This Year

DISTRICT	SumOCCW	SumOURFEW	SumOURFEWR	SumDISCOND	SumGRAFFITI	SumLITTERING	SumLOITER	SumLOITERPROS	SumCLOUDHAUSC	SumPUBDRNK	SumOPED	SumOSPEED	SumOPERICLAW	SumOVHREGLA	SumOTRAFOTHE	SumOFFICER	SumOCHECKE
1	48	35	4	493	11	29	216	5	53	186	134	934	1271	2291	136	32809	0
2	120	227	35	1377	60	81	398	7	122	529	30	1143	2137	2044	604	19193	0
3	175	183	31	1616	53	64	757	42	192	589	68	1546	1713	1137	212	30771	0
4	117	211	12	2008	40	19	338	0	205	118	11	1728	1844	1954	421	15759	0
5	156	183	17	1563	33	44	647	18	301	426	30	2213	1294	910	185	17855	0
6	151	189	15	1479	46	22	448	35	135	162	17	1856	1503	1168	387	14819	0
7	269	342	52	2369	62	63	967	13	376	237	57	2148	2931	2534	728	23083	0
C	18	15	16	96	4	1	36	3	2	12	0	20	55	28	17	404	0
S	120	131	10	482	4	33	503	166	855	326	189	4930	5276	6195	5217	7787	0
Z	23	66	3	230	3	9	78	7	80	92	8	175	373	288	99	66567	0

2003

Last Year

DISTRICT	SumOCCW	SumOURFEW	SumOURFEWR	SumDISCOND	SumGRAFFITI	SumLITTERING	SumLOITER	SumLOITERPROS	SumCLOUDHAUSC	SumPUBDRNK	SumOPED	SumOSPEED	SumOPERICLAW	SumOVHREGLA	SumOTRAFOTHE	SumOFFICER	SumOCHECKE
1	93	47	12	759	37	64	422	1	93	276	572	1607	2420	3340	293	50790	112334
2	143	692	149	1848	198	72	699	29	149	569	47	1912	3252	2767	533	18238	94531
3	189	258	60	1980	225	53	974	81	191	643	87	2879	3266	1930	362	31663	66166
4	144	510	47	2247	98	15	383	1	158	78	14	3098	2771	2553	558	18388	39143
5	181	352	62	2033	193	51	645	45	314	473	66	2761	2748	1744	369	18553	135527
6	199	397	39	1819	196	30	681	94	135	219	33	2924	2481	1928	697	15704	58773
7	301	771	129	2523	275	69	1015	33	454	294	76	2586	4579	3304	908	30581	92125
C	30	16	7	114	11	2	87	3	14	16	2	34	123	66	15	1028	46
S	241	343	46	1011	24	73	694	144	1270	775	515	8524	9004	8557	6182	11992	0
Z	38	53	11	321	42	48	125	19	69	111	24	317	738	454	74	5286	496

Crime Statistics

YEARLY QUALITY OF LIFE COMPARISONS 2004 - 2003

	C.C.M.	Curfew Parent	Dis. Cond.	Curfew	Graffiti	Littering	Loitering	Loitering (Prost.)	Loud Music	Public Drinking	Speed	Oper. Lic. Law	Veh. Reg. Law	Traffic Other	Total	
District 1	2004 Total 2003 Total Percent Change	6 1 -75.0%	147 119 23.5%	0 1 -100.0%	0 0 0.0%	5 12 -58.3%	56 99 -43.4%	3 0 300.0%	3 5 -40.0%	36 68 -47.1%	18 37 -51.4%	259 703 -63.2%	28 62 -54.8%	327 629 -48.0%	18 55 -67.3%	907 1,801 -49.6%
District 2	2004 Total 2003 Total Percent Change	25 37 -32.4%	88 149 -40.9%	4 3 27.3%	6 578 500.0%	6 1 -47.6%	11 222 -30.6%	10 16 -37.5%	27 13 107.7%	127 114 11.4%	11 12 -8.3%	396 755 -47.5%	210 251 -16.3%	509 527 -3.4%	67 86 -22.1%	2,065 2,785 -25.9%
District 3	2004 Total 2003 Total Percent Change	33 52 -36.5%	55 28 96.4%	4 3 33.3%	4 627 300.0%	4 1 -6.3%	15 491 -58.0%	11 7 57.1%	24 15 60.0%	147 169 -13.0%	10 15 -33.3%	388 687 -43.5%	126 153 -17.6%	848 926 -8.4%	113 117 -3.4%	2,572 3,307 -22.2%
District 4	2004 Total 2003 Total Percent Change	32 47 -31.9%	58 85 -31.8%	7 7 0.0%	524 497 5.4%	0 2 -200.0%	7 101 -26.7%	5 0 500.0%	25 15 66.7%	15 16 -6.3%	3 4 -25.0%	658 986 -33.3%	80 123 -35.0%	864 1,056 -18.2%	133 207 -35.7%	2,485 3,153 -21.2%
District 5	2004 Total 2003 Total Percent Change	37 41 -9.8%	15 24 -37.5%	2 0 200.0%	382 387 -1.3%	6 3 100.0%	8 1 700.0%	2 135 -40.7%	68 90 -24.4%	103 59 74.6%	28 29 -3.4%	664 808 -17.8%	236 270 12.3%	585 521 12.3%	48 52 -7.7%	2,071 2,408 -14.0%
District 6	2004 Total 2003 Total Percent Change	23 22 4.5%	28 63 -55.6%	0 16 -160.0%	333 405 -17.8%	1 8 -87.5%	2 8 -75.0%	6 181 -47.0%	19 8 26.7%	28 15 -3.4%	2 29 0.0%	664 808 -17.8%	236 270 12.3%	585 521 12.3%	48 52 -7.7%	2,071 2,408 -14.0%
District 7	2004 Total 2003 Total Percent Change	62 48 29.2%	49 36 36.1%	1 7 -85.7%	547 444 23.2%	0 2 -200.0%	18 11 63.6%	11 2 450.0%	26 24 8.3%	47 48 -2.1%	11 12 -8.3%	598 737 -18.9%	123 91 35.2%	598 477 25.4%	101 76 32.9%	2,331 2,192 6.3%
CIB	2004 Total 2003 Total Percent Change	3 10 -70.0%	0 1 -100.0%	0 23 -26.1%	17 0 0.0%	0 0 0.0%	0 5 0.0%	0 0 0.0%	0 0 0.0%	0 3 -100.0%	0 9 -11.1%	8 20 -60.0%	3 10 -70.0%	3 25 -88.0%	3 10 -70.0%	62 101 -38.6%
Spec. Op.	2004 Total 2003 Total Percent Change	16 16 0.0%	3 20 -85.0%	0 1 -100.0%	59 79 -25.3%	1 2 -50.0%	2 132 -76.5%	25 12 -79.3%	6 29 -79.3%	64 94 -31.9%	60 34 76.5%	1,423 1,208 17.8%	283 278 1.8%	1,147 961 19.4%	522 544 -4.0%	3,642 3,422 6.4%
Other	2004 Total 2003 Total Percent Change	3 7 -57.1%	4 3 33.3%	0 2 -200.0%	42 55 -23.6%	1 2 -50.0%	1 16 -50.0%	0 5 -100.0%	3 10 -70.0%	8 24 -66.7%	3 3 0.0%	59 53 11.3%	26 46 -43.5%	108 212 -49.1%	16 25 -36.0%	282 465 -39.4%
	2004 Grand Total 2003 Grand Total Percent Change	240 287 -16.4%	304 417 -27.1%	18 41 -56.1%	3,059 3,214 -4.8%	19 21 -9.5%	69 90 -23.3%	73 55 32.7%	201 216 -6.9%	575 624 -7.9%	125 123 1.6%	4,779 6,446 -25.9%	1,210 1,356 -10.8%	5,621 5,733 -2.0%	1,055 1,202 -12.2%	18,197 21,384 -14.9%

NOTES: *Percent Change category is computed comparing the current year to the previous year.
 *Compiled statistics are based upon Municipal Citation issuance and State Statute (including Traffic) arrests for the aforementioned categories.
 *These statistical reports are tabulated utilizing a different statistical methodology than that for Uniform Crime Reporting.

Crime Statistics

UNIFORM CRIME REPORT

CLASSIFICATION BY OFFENSE	OFFENSES REPORTED	UNFOUNDED BASELESS COMPLAINTS	NUMBER OF ACTUAL OFFENSES	TOTAL OFFENSES CLEARED	NUMBER OF CLEARANCES INVOLVING PERSONS UNDER 18
CRIMINAL HOMICIDE	90	3	87	70	5
A. Murder and Non-negligent Homicide	89	3	86	69	5
B. Manslaughter by Negligence	1	0	1	1	0
FORCIBLE RAPE	189	14	175	140	29
A. Rape by force	179	14	165	134	28
B. Attempts to commit forcible rape	10	0	10	6	1
ROBBERY	2,625	74	2,551	551	152
A. Firearms	1,757	42	1,715	334	84
B. Knife or Cutting Instrument	135	8	127	46	11
C. Other Dangerous Weapon	73	2	71	17	2
D. Strong-Arm (hand, fists, feet, etc.)	660	22	638	154	55
ASSAULT	7,698	79	7,619	5,762	552
A. Firearms	593	3	590	188	27
B. Knife or Cutting Instrument	343	3	340	228	19
C. Other Dangerous Weapon	289	0	289	183	22
D. Strong-Arm (hands, fists, feet, etc.)	601	4	597	427	66
E. Other Assaults-Simple Not Aggravated	5,872	69	5,803	4,736	418
BURGLARY	4,534	3	4,531	463	96
A. Forcible Entry	3,016	1	3,015	302	63
B. Unlawful Entry - No Force	1,454	2	1,452	176	37
C. Attempted Forcible Entry	64	0	64	15	3
LARCENY - THEFT (except motor vehicle theft)	21,876	11	21,865	1,150	162
MOTOR VEHICLE THEFT	5,743	71	5,672	628	231
A. Autos	5,481	69	5,412	601	216
B. Trucks and Buses	220	2	218	20	4
C. Other Vehicles	42	0	42	6	1
TOTAL	63,634	754	105,636	25,201	2,289

Crime Statistics

YEARLY ARREST INFORMATION CHARGE TOTALS — ADULT 2004 (State)

OFFENSE	JAN	FEB	MAR	APR	MAY	JUN	JUL	AUG	SEP	OCT	NOV	DEC	TOTAL
Murder	15	14	10	12	12	10	14	13	18	19	12	14	163
Manslaughter	0	0	0	0	1	1	1	0	0	0	0	0	3
Forcible Rape	10	3	16	11	6	6	8	9	14	8	11	9	111
Robbery	46	32	32	41	38	48	61	55	45	53	47	37	535
Agg. Battery	207	192	247	226	227	238	247	228	247	244	213	204	2,720
Burglary	30	35	31	29	39	34	40	27	28	35	43	35	406
Theft (No Auto)	459	406	416	445	407	473	418	472	443	429	495	402	5,265
Auto Theft	5	2	11	6	11	1	4	3	4	7	10	6	70
Battery	175	143	210	182	172	222	209	232	220	189	192	182	2,328
Forgery	12	22	17	14	9	15	9	5	8	12	14	12	149
Embezzle & Fraud	15	23	32	27	25	29	25	18	20	16	16	24	270
Stolen Property	54	46	44	47	28	35	40	33	45	47	37	26	482
Weapons	92	93	113	106	108	97	99	139	121	84	120	71	1,243
Prostitution	122	125	147	138	147	214	313	323	134	268	254	97	2,282
Other Sex Off.	25	32	33	36	24	36	42	19	33	44	34	21	379
Off Ag Fam. Child	79	52	74	54	67	71	60	71	63	79	63	58	791
Narc. Drug Law	335	358	381	321	382	358	358	358	369	352	295	287	4,154
Liquor Laws	97	106	143	99	156	180	150	101	114	109	166	206	1,627
Dis. Conduct	1,028	1,042	1,185	1,209	978	1,338	1,385	1,304	1,194	1,147	1,068	880	13,758
Gambling Laws	4	11	7	17	7	23	13	21	32	6	6	3	150
Driving W/Intox	109	113	155	125	100	118	110	97	138	94	108	134	1,401
Crim. Dam. Prop.	153	157	241	250	261	284	259	304	299	246	217	176	2,847
Arson	3	2	2	2	2	7	6	2	4	3	4	6	43
Miscellaneous	1,499	1,481	1,867	1,637	1,497	1,767	1,770	1,803	1,937	1,625	1,620	1,350	19,853
Total Arrests	4,574	4,490	5,414	5,034	4,704	5,605	5,641	5,637	5,530	5,116	5,045	4,240	61,030

Crime Statistics

YEARLY ARREST INFORMATION CHARGE TOTALS — JUVENILE 2004 (State)

OFFENSE	JAN	FEB	MAR	APR	MAY	JUN	JUL	AUG	SEP	OCT	NOV	DEC	TOTAL
Murder	12	2	41	28	60	32	20	13	8	25	24	16	281
Manslaughter	0	0	0	0	0	0	0	0	0	0	0	0	0
Forcible Rape	2	7	7	3	0	4	6	4	1	1	2	3	40
Robbery	19	20	17	16	7	33	50	20	21	41	41	22	307
Agg. Battery	22	27	39	32	34	23	17	17	30	47	26	23	337
Burglary	9	6	17	14	30	27	27	32	28	22	15	11	238
Theft (No Auto)	130	166	181	184	189	203	186	188	174	181	177	172	2,131
Auto Theft	10	5	3	6	5	2	9	3	1	4	10	5	63
Battery	81	99	158	108	103	94	67	52	99	129	139	103	1,232
Forgery	0	5	3	0	0	2	0	0	1	0	0	0	11
Embezzle & Fraud	0	0	2	2	0	2	6	3	1	2	2	2	22
Stolen Property	36	38	42	41	37	26	32	44	25	32	25	24	402
Weapons	33	44	56	32	33	38	16	26	32	37	47	33	427
Prostitution	1	2	7	5	3	1	12	13	5	4	6	3	62
Other Sex Off.	36	20	27	33	27	14	11	24	23	19	17	10	261
Off Ag Fam. Child	0	5	3	4	4	2	4	2	8	6	3	1	42
Narc. Drug Law	71	85	107	57	79	74	55	58	59	59	60	38	802
Liquor Laws	12	21	33	30	9	27	51	22	11	9	18	14	257
Dis. Conduct	422	572	672	555	492	521	356	370	474	596	677	442	6,149
Gambling Laws	0	1	0	4	1	11	3	10	15	7	0	0	52
Driving W/Intox	0	0	2	1	4	2	0	2	0	0	0	1	12
Curfew Ordinance	139	108	119	130	89	147	204	225	184	112	139	70	1,666
Runaway Ordinance	0	0	0	1	0	0	0	0	0	0	0	3	4
Crim. Dam. Prop.	27	34	52	46	48	49	48	61	57	48	79	41	590
Arson	2	0	2	0	3	2	5	2	2	4	2	2	26
Miscellaneous	226	301	472	371	347	390	237	269	347	387	331	261	3,939
Total Arrests	1,290	1,568	2,062	1,703	1,604	1,726	1,422	1,460	1,606	1,772	1,840	1,300	19,353

2004 Annual Report Committee Members

Lt. Regina Howard, Lt. Gary Gacek & Sgt. Martin Dudenhoefer	Articles
Sgt. Martin Dudenhoefer	Graphs
Data Services Section	Statistical Data
Printing Supervisor Raymond C. Oelke	Print Supervisor
Graphic Designer II Diane F. Lardinois	Design and Layout
Production Designer William R. Bono	Production

Please visit the Milwaukee Police Department Web Site at: <http://www.milwaukeepolice.org>

Designed and produced by the Milwaukee Police Department — Printing Section