

# **ANNUAL REPORT**

**MILWAUKEE, WISCONSIN  
POLICE DEPARTMENT**

**1985**



# **MILWAUKEE, WISCONSIN POLICE DEPARTMENT**

**1985  
ANNUAL REPORT**



**ROBERT J. ZIARNIK  
CHIEF OF POLICE**

IN MEMORIAM



POLICE OFFICER

ROSARIO J. COLLURA

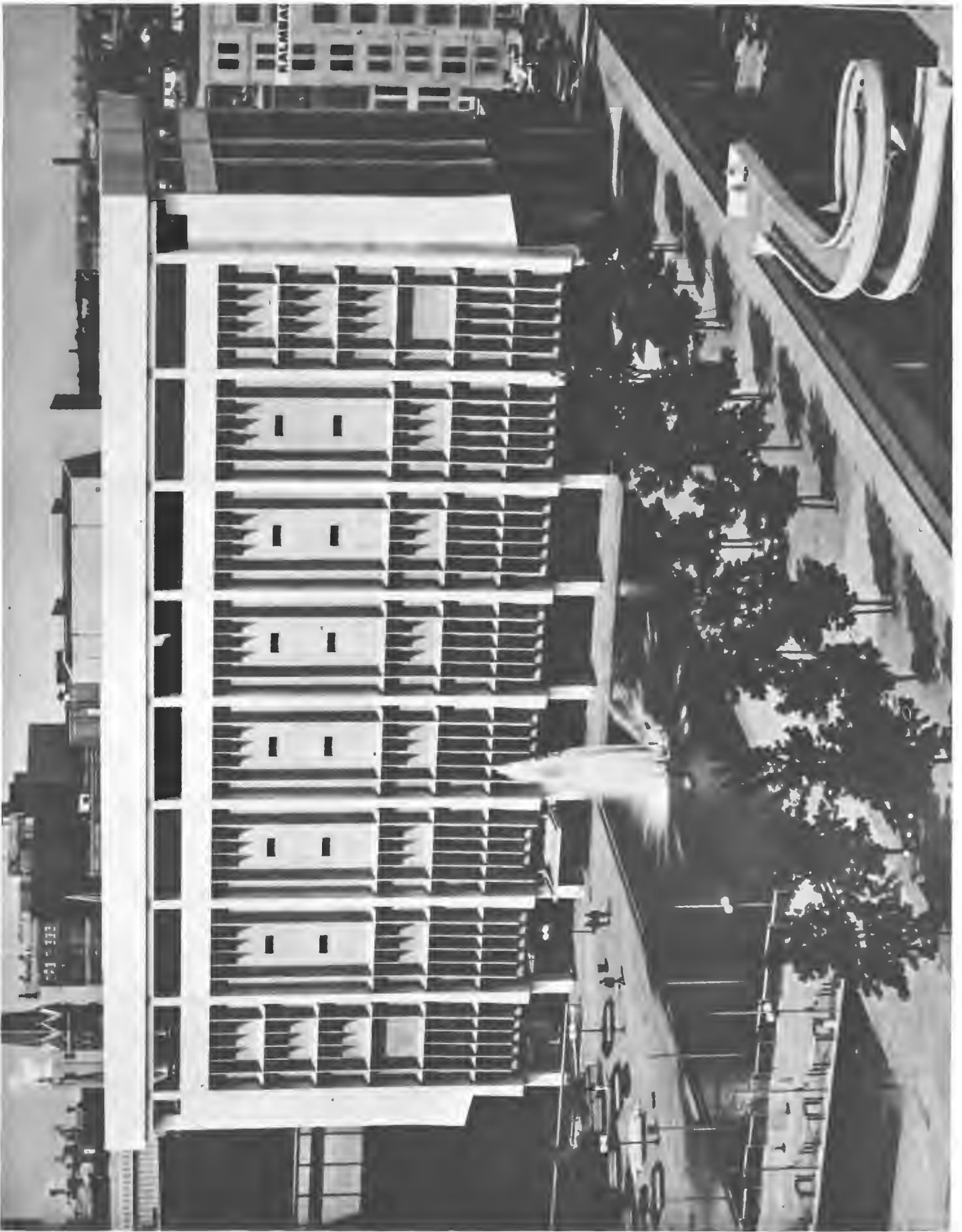
POLICE OFFICER  
LEONARD R. LESNIESKI



At approximately 9:30 a.m. on March 19, 1985, Officers Collura and Lesnieski were patrolling in the area of 17th and Center Streets when they observed five male subjects standing near a grocery store which was the scene of recent armed robberies. The area was also known for narcotics activity. Officers Collura and Lesnieski proceeded to conduct a field interrogation of the subjects, and during the interrogation, one of the subjects drew a handgun and shot Officer Lesnieski in the chest. The gunman then turned and shot Officer Collura, also striking him in the chest. The suspect fled the area but was later taken into police custody.

MEMBERS KILLED IN LINE OF DUTY

Ptm. Frank Piacseck	1884	Ptm. Arnold O. Werner	1943
Ptm. John Kessow	1899	Ptm. Valentine Adam	1948
Lineman Jacob Mangold	1903	Ptm. Elmer A. Bates	1948
Ptm. Otto Flieth	1908	Ptm. Vernon White	1951
Ptm. Peter Gauer	1909	Police Sgt. Raymond Nencki	1959
Ptm. Frederick W. Kaiser	1917	Ptm. Robert E. Kraemer	1963
Ptm. David O'Brien	1917	Ptm. James Rivers	1966
Ptm. Paul J. Weiler	1917	Ptm. Ronald T. Hogan	1967
Ptm. Albert H. Templin	1917	Ptm. Bryan J. Moschea	1967
Ptm. Charles Seehawer	1917	Ptm. George Fish	1970
Ptm. Frank Caswin	1917	Ptm. Alan Sroczynski	1970
Ptm. Stephen H. Stecher	1917	Ptm. Paul Du Planty	1971
Ptm. Henry Deckert	1917	Ptm. Gerald W. Hempe	1973
Operator Edward Spindler	1917	Ptm. Charles T. Smith	1973
Ptm. William Kaemmerling	1922	Ptm. Ronald Reagan	1973
Ptm. Joseph Kubacki	1924	Ptm. Thomas G. Matulis	1974
Ptm. Walter Luedtke	1924	Ptm. Robert D. Riley	1974
Ptm. Harry Schmidt	1925	Ptm. Michael L. Draeger	1974
Ptm. Hilbert F. Thurow	1930	Ptm. Dennis L. Obradovich	1975
Ptm. Robert Bahlke	1932	P.O. Albert Kohn	1975
Ptm. Richard Zingler	1933	P.O. Thomas R. Kiefer	1977
Patrol Sgt. Harry Pieske	1935	P.O. John A. Machajewski	1981
Ptm. Charles H. George	1936	P.O. Charles S. Mehlberg	1981
Ptm. Nels M. Goodmann	1937	P.O. Sydney C. Snow	1982
Ptm. George H. Raabe	1937	P.O. Leonard R. Lesnieski	1985
Ptm. Joseph A. Lecher	1943	P.O. Rosario J. Collura	1985





## TABLE OF CONTENTS

Chief's Introductory Letter .....	2
Board of Fire and Police Commissioners .....	4
Office of the Chief of Police .....	6
Office of the Assistant Chief of Police .....	8
Deputy Chief - Uniform Bureau .....	9
Criminal Investigation Bureau .....	14
Technical Services Bureau .....	16
Personnel/Administration Bureau .....	22
Training Bureau .....	23
Police Officer Citations .....	26
Citizen Awards of Merit .....	28
Retirements/In Memoriam .....	29
Salary Schedules .....	31
Fiscal Operations .....	34
Statistical Charts .....	35



Department of Police

Robert J. Ziarnik  
Chief of Police

*The Honorable Henry W. Maier, Mayor  
The Honorable Common Council  
The Honorable Board of Fire and Police Commissioners*

*Mayor, Ladies and Gentlemen:*

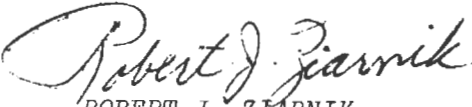
*I am pleased to submit to you the Annual Report of the Milwaukee Police Department for the year 1985.*

*This report will, through the use of statistics, text and photographs, provide an overview of the department, its personnel and its accomplishments.*

*I am pleased to announce in regard to crime trend reports of Part I crimes (murder, rape, robbery, aggravated assault, theft and auto theft), a decrease of 9.3% from 1984 reports. This is the first year-to-year crime decrease since 1978. An 11.6% decrease in thefts, the most frequently reported crime in the City of Milwaukee, impacted strongly on this decrease, as reported in the Fire and Police Commission's annual Crime in the City of Milwaukee report. However, this is no time for complacency, and I look forward to the continued cooperative input of our citizens to assist in our mission of reducing crime and providing for a safe community.*

*I would like to take this opportunity to thank you Mayor, members of the Common Council, and the Board of Fire and Police Commissioners, along with all the citizens of this fine community for all of the cooperation that you have extended me.*

*Respectfully submitted,*

  
ROBERT J. ZIARNIK  
CHIEF OF POLICE

RJZ/ds



ROBERT J. ZIARNIK  
CHIEF OF POLICE



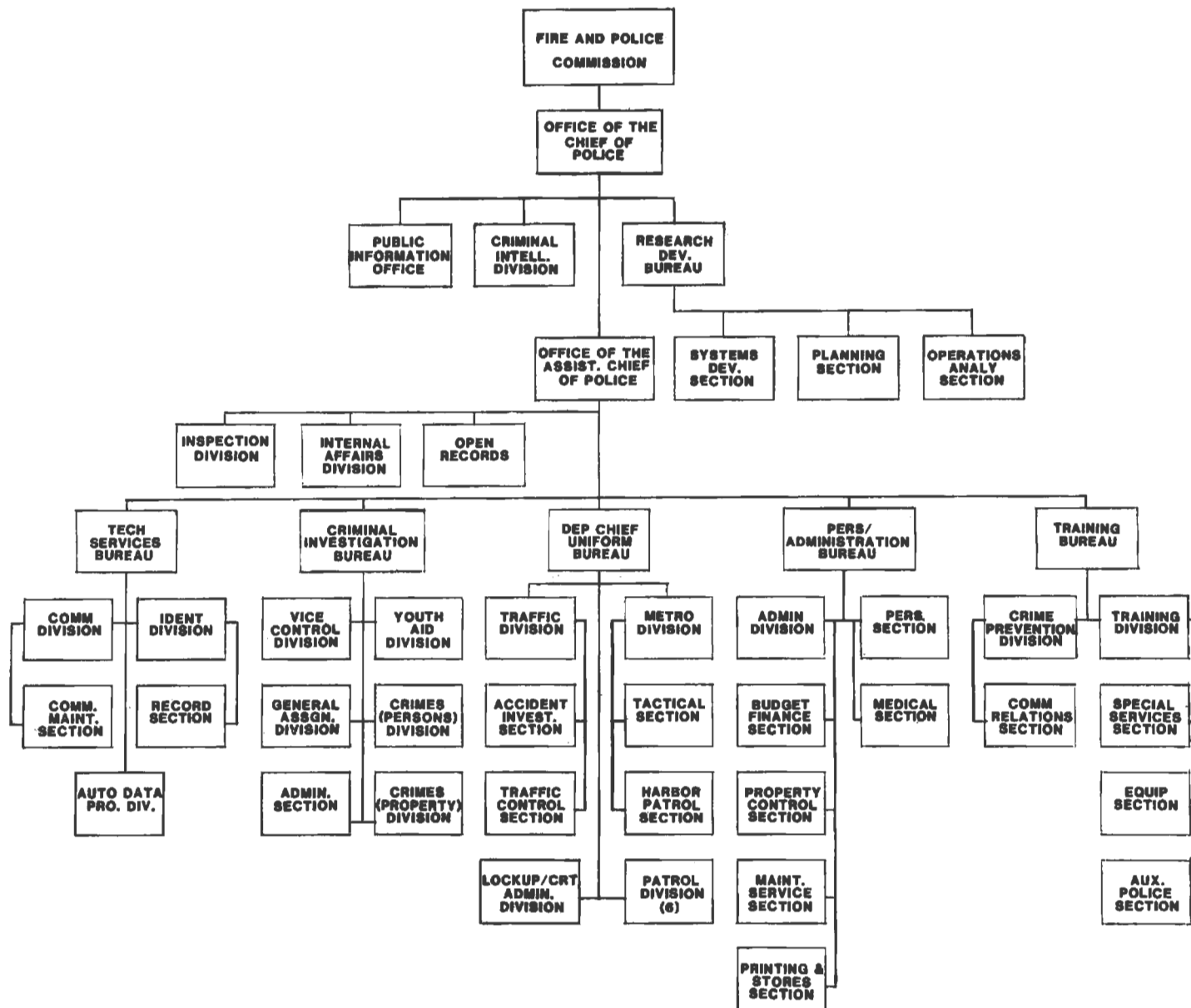
## FIRE AND POLICE COMMISSIONERS



Top row left to right: Gilbert Jewell; Steven E. Kravit; James F. Blumenberg, Exec. Director; Ronald S. Sanfelippo;  
Patrice M. Hargarten, Vice Chairman

Seated left to right: William Stamm, Fire Chief; William I. Gore, Chairman; Robert J. Ziarnik, Chief of Police

# ORGANIZATIONAL CHART



# OFFICE OF THE CHIEF OF POLICE

## Public Information Office

This office is commanded by a Captain of Police who responds directly to the Chief. He is responsible for preparing news releases, coordinating department participation in television and radio programs, and coordinating speaking engagements for the Chief and department staff.

Additionally, he is the Chief's personal ADJUTANT. He manages the immediate office of the Chief and when called upon, be his personal representative.

## Criminal Intelligence Division

The Criminal Intelligence Division was started by Chief Robert Ziarnik in June of 1985. This Division is commanded by a Captain of Police and is staffed by one Detective Lieutenant, eight Detectives, and one Clerk Stenographer III.

The mission of the Criminal Intelligence Division is to gather, analyze, record and disseminate, in accordance with department policies and procedures, information on the criminal activities of persons, groups, and organizations that conspire or attempt to conspire through association with others, to obstruct justice or violate criminal statutes. The Division establishes liaison with local, state, and federal criminal investigative agencies in order to coordinate criminal investigations that cross jurisdictional boundaries and require an exchange of information to facilitate criminal investigative procedures.

The Criminal Intelligence Division also provides security for visiting dignitaries when requested. Dignitary protection investigations are conducted solely for the purpose of insuring the physical safety of a visiting public official or other dignitary.

## Research and Development Bureau

The statistical analysis, research, and planning, as well as systems development are the functions of this Bureau. This Bureau is commanded by an Inspector of Police, who directs the following sections:

### Systems Development Section

This section is headed by a Captain of Police who responds to the Bureau commander. He is responsible for the research and preparation of departmental procedures that may be officially adopted as standards and guidelines for action, which include directives, memoranda, and general and special orders. This section develops and maintains procedural manuals and rules-and-regulations manuals, as well as design and control of department-wide forms.

### Planning Section

All planning efforts, both long and short-range, are the primary responsibility of this division. Constant interaction is required with other department line and staff units. Preparatory planning includes, for example, organization considerations, while operational planning emphasizes the actions to be taken to accomplish the department's objectives of preventive patrol and investigation. Tactical planning performed by this division includes detailed action to be taken under specific situations, e.g. jail disturbances and special events. This division is commanded by a Lieutenant of Police, who responds directly to the Bureau commander.

### Operations Analysis Section

This section performs all general and specific research and analysis activities in the department. This section continuously examines existing and proposed legislation and court decisions to determine the real or potential impact upon department operations. The development and testing of both new police equipment and operational methods and techniques shall also be conducted by this section. The Operations Analysis Section is headed by a Lieutenant of Police who responds directly to the Bureau commander.

# OFFICE OF THE ASSISTANT CHIEF OF POLICE

## Inspectional Services Bureau

The three divisions included in this Bureau perform activities that are among the most confidential and sensitive in the department. The Assistant Chief of Police is in charge of this Bureau, and he directs the activities of the following divisions:

### Inspection Division

Line inspection, i.e., the inspection of the operations of the unit commanders and supervisors as well as their operations. The value of a staff inspection division is increased by the fact that its operations are conducted outside the normal channels of command. Three Deputy Inspectors assigned to this division report directly to the Inspectional Services Bureau commander.

### Internal Affairs Division

A commanding officer or supervisor should not be relieved of his responsibility for investigating many of the minor incidents that constitute a breach of conduct. However, more serious infractions and citizen complaints against department personnel are handled by this division. The Internal Affairs Division is headed by a Deputy Inspector of Police who responds directly to the Inspectional Services Bureau commander.

### Open Records Division

This division handles all requests of department records and information in compliance within the legal requirements of the law. The commander of this division is a Lieutenant of Detectives who responds directly to the Inspectional Services Bureau commander.

# DEPUTY CHIEF UNIFORM BUREAU

The personnel of the Uniform Bureau directs their efforts toward the achievement of one of the department's primary goals - crime prevention. The commander of this Bureau is the Deputy Chief of Police and he manages the activities of the following:

## Patrol Districts

Each district Captain responds directly to the Deputy Chief in charge of the Uniform Bureau. Each of the six patrol districts continue to discharge their responsibilities in a manner consistent with the needs of the community. They continue to provide a substantial measure of clearly defined preliminary investigative activities.

## Traffic Division

The Traffic Division serves as a record control center for citations issued to persons by Police Officers. The Deputy Inspector commanding this division responds directly to the head of the Uniform Bureau while coordinating the efforts of the following sections: (NOTE: When the incumbent commander vacates his position, the position will revert to Captain of Police).

Accident Investigation Section - The primary responsibilities of this section are to conduct follow-up investigations on Hit and Run accidents and to serve as a record center for all accidents occurring within the City of Milwaukee. This section is headed by a Lieutenant who responds to the Division commander.

This section inspects taxicabs for mechanical and structural failures and reports their findings to the Licensing Committee of the Common Council. The background investigations of applicants for taxicab drivers applying for permits is also a function of the unit.

This section also works in concert with the City Traffic Engineers and the Safety Commission analyzing accident data to determine cause and taking steps to reduce the frequency of motor vehicle accidents.







Traffic Control Section - This section, headed by a Sergeant who responds to the Division commander, is responsible for the execution of all traffic enforcement duties and the study for control of congested intersections and street crossings for citizen safety.

#### Lockup/Court Administration Division

This division is headed by a Captain of Police. The main functions of this division are to process all paperwork connected with an arrest, security involving prisoners, and preparing cases to court.

In 1985, this division handled 2,981 felonies, 6,985 misdemeanors, and 6,360 traffic cases in Circuit Court. In Municipal Court there was 34,800 ordinance violations, 55,200 traffic and 13,128 juvenile cases processed.

With the cooperation of the Milwaukee Circuit Courts, the District Attorney, the Municipal Courts, and the City Attorney, we have streamlined the process. This permits officers to stay on patrol and has reduced the overtime involved. This reflects a large savings on our budget.



#### Metropolitan Division

The Metropolitan Division was created with the re-organization of the Police Department and was implemented on June 16, 1985. This division is a trained and disciplined source of reserve strength. This division is commanded by a Deputy Inspector and is responsible for crimes repressible by patrol activity, such as robbery and auto theft. As a mobile force, they are responsible for all special events, i.e., MECCA events, rape and burglary details, parades, etc. This division is divided into six separate sections:



**Tactical Section** - The Tactical Section has the responsibility of resolving all barricade and hostage situations. In addition, tactical officers respond to assist the district officers on all weapon related assignments. Tactical officers also are utilized on various Task Forces targeting those areas experiencing a high occurrence of offenses such as Auto Thefts, Burglaries, and Robberies.



**Traffic Cycle Section** - The Traffic Cycle Section continues to be a major conduit for the investigation of traffic accidents, traffic control, and escort duties. Officers assigned to solo cycles continue to be utilized for the ever increasing special events. Traffic officers have been assigned to various Task Forces as well as temporary assignments for special Homicide investigations through the Accident Investigator's Office.



**General Duty Section** - The General Duty Section has the responsibility for the great majority of special events such as Summerfest, parades, running events, concerts, and the various ethnic fests. The General Duty Section also responds to calls for police service from the respective six Police Districts. Officers assigned to the General Duty Section also participate in the Auto Theft, Burglary, and Robbery Task Forces. Through close cooperation with personnel assigned to the Criminal Investigation Bureau and the Districts, major arrests have been made in all these areas.

Gang Crimes Section - Officers assigned to the Gang Crimes Unit of the Metropolitan Division maintain current intelligence on gang membership and gang related offenses. Members of this unit maintain close cooperation with Detectives assigned to the Criminal Intelligence Bureau and officers assigned to the various Districts regarding gang related activities and these efforts have resulted in the incarceration of many of the hard core gang members. Members of this unit also provide informational services through public speaking engagements, seminars, and other educational forms throughout the community.

Underwater Search and Recovery Unit - Officers assigned to the Underwater Search and Recovery Unit of the Metropolitan Division have the responsibility for the searching and recovering of drowning victims in the lake and rivers of the city. Members of this unit receive extensive training and are all certified divers. In the past, members of this unit have been called upon by the Criminal Investigation Bureau to conduct searches and recover evidence from Burglaries and Robberies.



Harbor Patrol Section - The Milwaukee Police Department Harbor Patrol consists of two boats that patrol the waters of the City of Milwaukee. The primary area of patrol for Squad 311 is the "outer harbor," the waters of Lake Michigan between the shore and the government break water. The primary area of patrol for Squad 312 is the "inner harbor," the rivers that flow into Lake Michigan. Officers assigned to the Harbor Patrol Section enforce boating laws and ordinances, investigate boating accidents, and cooperate with the U.S. Coast Guard in search and rescue.



# HARBOR PATROL 1985 ACTIVITY

	ARRESTS	WARNINGS
Boat Registration	66	143
Identification Numbers	7	18
Registration Certificate	15	30
Life Preserver	72	32
Lighting Equipment	17	50
Hazardous Operation	41	90
Prohibited Operation	12	29
Ordinance Violation	25	44
Other Marine Violation	<u>4</u>	<u>3</u>
	259	439

## COST OF OPERATION

Salaries	\$104,698
Travel, Materials and Supplies	18,265
Depreciation Claimed for Equipment	3,444

SUB-TOTAL	\$126,407
-----------	-----------

Less fines or forfeitures collected as a result of conviction  
for violations of ordinances enacted pursuant to Section 30.77  
of the Wisconsin Statutes \$ 3,075

NET COST OF PATROL	\$123,332
--------------------	-----------

Reimbursement Claim (75%) for water safety patrol filed with Wisconsin Department of Natural Resources	\$ 92,499
---	-----------

# CRIMINAL INVESTIGATION BUREAU

The personnel assigned to this Bureau conduct investigations supplementing those initiated by uniformed personnel. The Criminal Investigation Bureau (CIB) is commanded by an Inspector of Police and comprises the following divisions:

## Crimes-Against-Persons Division

Personnel assigned to this division perform specialized investigations pertaining to homicide, assault, sex, and robbery offenses. The division is commanded by a Deputy Inspector.

## Crimes-Against-Property Division

Personnel of this subunit perform specialized investigations pertaining to burglary, theft, and auto theft offenses and related pawnshop activities. This division is commanded by a Captain.

## General Assignment Division

Personnel assigned to this division include investigations for offenses not specifically covered by the above sections, and investigations of non-index felony offenses such as fraudulent checks, bombings, and arson. This division is commanded by a Captain.

Administrative Section - The Administrative Section performs administrative and clerical operations for the Criminal Investigation Bureau. This section is headed by a Supervisor of CIB Administration, who responds to the commander of the General Assignment Division.

## Vice Control Division

As a result of the Department's reorganization, the Vice Control Division became a part of the Criminal Investigation Bureau and is commanded by a Captain of Police. In spite of the change in administrative control, the areas of responsibility continue to include; gambling, sexual assault, pornography, prostitution, and narcotic control.

The sexual assault unit has experienced a significant increase in related investigations and has been able to maintain a 90 percent clearance rate. The unit is also preparing a more comprehensive method of program operations awaiting the installation of the new computer system. The program will not only assist in identifying suspects, but will also assist in identifying trends enabling the prompt establishment of directed patrol missions.

The anti-prostitution unit has continued its enforcement aimed at female prostitution and has expanded their investigations into male prostitution and their patrons.

Under new direction, the narcotic squad has expanded its investigative techniques through the use of informants, an expanded money flow, wiretaps, and the confiscation of illegally obtained money and proceeds. A comprehensive records management program has also been accomplished.



### Youth Aid Division

This Division is responsible for reviewing all reports relating to delinquency, pre-delinquency, or any phase thereof, cooperating closely with Youth Service Agencies, schools, the County Social Services Department, Children's Court Center, and the Municipal Courts. It coordinates the annual Crime Prevention Week activities, the Bicycle Safety Program, and the Baseball Card Program. It assists the Chief in formulating Department procedures for dealing with juvenile offenders and maintains records of all juvenile apprehensions or other juvenile contacts, child abuse or neglect cases, dependent children, interference with custody cases, and missing children reported to the Department.

During 1985, officers assigned to the Youth Aid Division responded to over 1600 calls for assistance, presented 160 speeches aimed at young people, assisted with or handled 849 investigations involving abused or neglected children or interference with custody cases and performed follow-up investigations on the 5785 juveniles reported missing.

The 1985 Crime Prevention Program reached 75,807 students in 211 schools. The Bicycle Safety Program was presented to 67,780 students in 191 schools. In addition, 1845 bicycles were given a safety inspection and 1617 bicycles were licensed.

During the 1985-86 school year, the Youth Aid Division, in conjunction with the Milwaukee Public Schools, established a pilot program in three high schools. This program, Youth Outreach, pairs a police officer with a teacher who conducts an intensive 3-day workshop with groups of 9th grade students. The workshops demand group participation rather than being presented as a lecture process. They are designed to break down barriers between the youth and authority figures, as well as to better prepare students to make proper, intelligent decisions about their future lives.





# TECH SERVICES BUREAU

## Communications Division

This division is commanded by a Captain who responds directly to the Bureau commander, who is an Inspector of Police. The Communications Division is charged with providing technical support to the Police Department as well as other City departments and bureaus. The main services include Switchboard Operations, Dispatch Operations, Communications Maintenance Section, Computer Switcher Operations, and Mail Service.



Switchboard Operations - All emergency calls for police service as well as non-emergency administrative calls are handled through this switchboard. Six million telephone transactions were handled in 1985. This year, Communications began a pilot program of tape recording thirteen incoming emergency telephone lines enabling them to record the entire emergency call from the citizen for police service. Due to the age of the existing system and its type of operation, specifications were prepared in 1985 to replace the obsolete switchboard with a new state-of-the-art telephone system incorporating centralized complaint taking.

Dispatch Operations Section - The Dispatch Operations Section maintains radio communications with all police personnel while on duty. Calls for police service are telephoned to the dispatcher from district complaint taking personnel. The dispatchers handled 1.9 million telephone and radio transactions in 1985.



Radio Maintenance Section - This section installs and maintains all radio and electronic equipment for 19 City departments and bureaus, primarily Police, Fire, Sanitation, Municipal Equipment, Forestry, Water and Electrical Services. The Police Radio Maintenance personnel installed a new City paging system with 125 tone and voice pagers.

Computer Switcher Operation - The Police Automated Computer System (PACS) provides the Computer Switcher Operation for the Police Department. In 1985, 16.2 million administrative messages, record and wanted checks, license registration, and other police related information were processed via this system.

Mail Service - The Mail Service Section picks up, sorts, and distributes mail throughout the Department. In 1985, 1.2 million pieces of mail were handled. This year also saw the purchase of a new mailing machine.

#### Identification Division

The Identification Division is commanded by a Captain and is staffed by 62 law enforcement and civilian members. This division is charged with the responsibility of conducting scientific investigations into criminal offenses in an effort to identify, apprehend, and prosecute those persons responsible. The basic functions concentrate on crime scene investigations, criminal identifications, and forensic evidence and presentation. The Identification Division is divided into four sections.



Fingerprint Section - This section provides crime scene examinations in the area of evidence collection and latent fingerprints in order to provide invaluable evidence in the investigation and clearance of major crimes and the apprehension of the perpetrators. 1985 saw the introduction of a mobile "Technical Evidence Unit" which responds to major crime scenes when requested. This unit also responded to the crash of Midwest Flight #105 at General Mitchell Field in September of 1985. Identification personnel assisted the FBI Disaster Response Team in identifying the victims of the accident.

Questioned Document Section - The Document Section is staffed by 1 Chief Document Examiner and 3 Document Examiners which provides the complete examination of questioned documents as related to all forgery, fraud, extortion, and white collar crimes. This section not only services the Milwaukee Police Department but over fifty local, state, and federal law enforcement agencies.

In 1985, the Document Section examined over 2,037 questioned documents which resulted in 1,415 positive identifications. The year 1985 further enhanced our conviction in not only criminal matters but in the prevention of crime. Document Examiners and Forgery Squad Detectives delivered over 20 speeches to local banks, merchants, and retirement community residents.





Record Section - This section is the criminal history records and information center for the entire Department. Additionally, this section processes all fire and police applicants, licensed persons, and premises that are required by city ordinance. The Records Section is staffed by 7 civilian clerks who are supplemented by Police Aides (Cadets) and operates 24 hours-a-day.

Photographic Section - This unit provides all photographic services to the Department as related to crime scenes, auto accidents, prisoner photos, and special assignments. This section is staffed by 3 Identification Technicians and 12 Police Officers who are assigned to mobile units.

In 1985, the mobile photo unit took 44,405 photos which resulted in the printing of 109,575 photographs for the Department.

Forgery Squad - This unit, while administratively assigned to the Criminal Investigation Bureau, operates out of the Identification Division. This unit investigates all forgery, fraud, and white collar crimes for the Department.

The Forgery Squad is staffed by 5 Detectives who, in 1985, received 2,527 criminal complaints which resulted in 69% of the cases being cleared.



#### Automated Data Processing Division

This division is responsible for the development, implementation, and support of computer services to the Department's divisions and bureaus including the following computer interfaces: National Crime Information Center, National Law Enforcement Terminal System, Crime Information Bureau, and the Department of Transportation. This division is headed by a Captain who responds directly to the Bureau commander, an Inspector of Police.

Centralized On-Line Booking - The new streamlined central booking process eliminated 14 existing forms and numerous duplicate prisoner bookings. Paperwork reduction and personnel time savings have more than cost justified the computerized on-line booking system. Data is entered and maintained relative to the arrest, incident, criminal history, and prisoner movement. Further benefits achieved with the system are improved control and identification of the prisoners within the system and associated increases in officer safety by use of the central facility.



Mainframe Installation - During 1985, a new IBM 4381 mainframe computer was installed as the Department's first step in pursuit of its own Data Processing operation. The new computer's main function is the on-line processing of Prisoner Booking, Criminal Histories, and Jail Management information with expanded capability for Computer-Aided-Dispatch in 1987.

Cash Management System - In 1985, the Police Department's Cash Management System became a reality. Twelve NCR Model 2950 computerized cash registers were installed at the various districts and bureaus replacing obsolete manual cash registers. Along with the machines came the capability of transmitting all cash transactions to an IBM mainframe computer by a telecommunications network generating financial and statistical reports, developing clear audit trails, and maintaining the integrity of the accounting system.

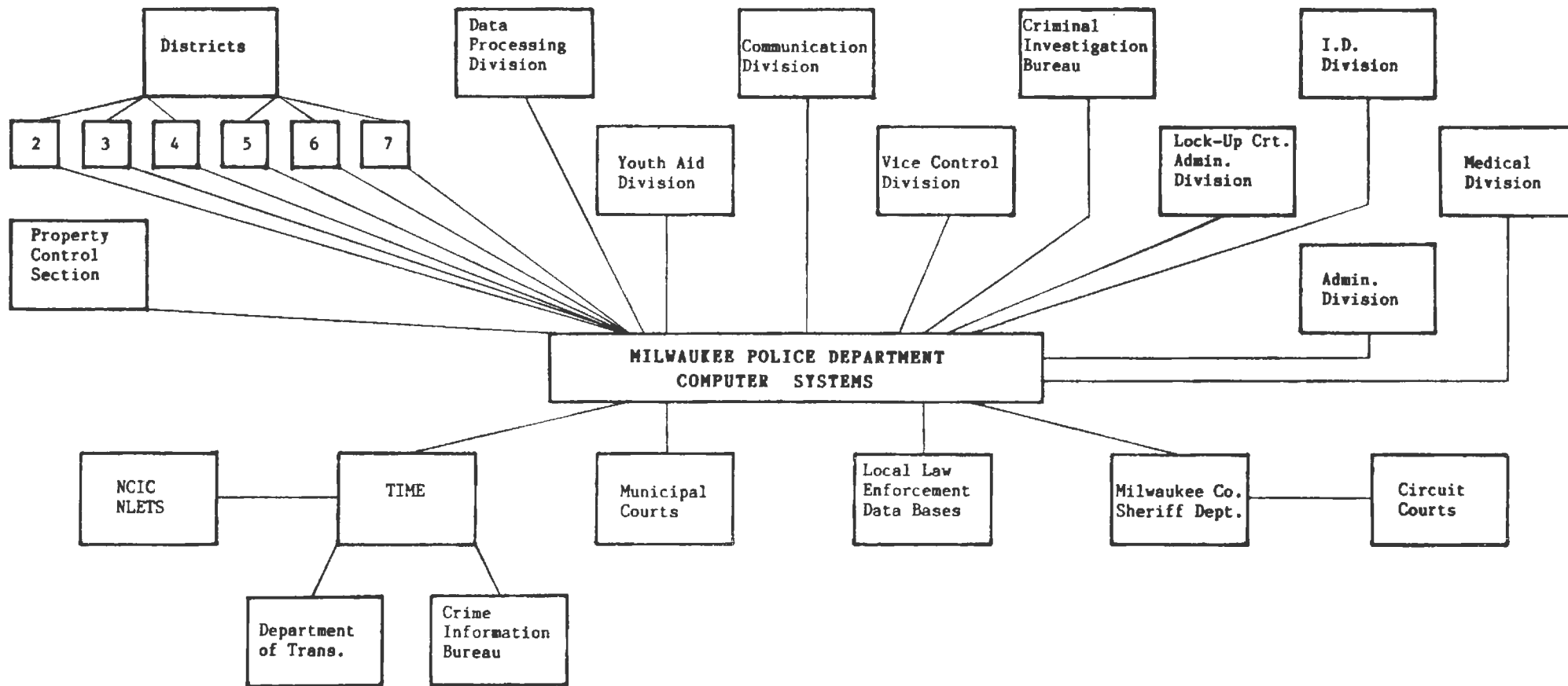
Third District Word Processing - Along with the other success stories which rose out of the reorganization of the Department, is the Word Processing Call-in pilot report program at the Third District Station. Police Officers became more visible to the community as a result of the decreased time officers spent handwriting reports. Officers had the option of calling in reports to dictating equipment located at the District Station or remain on patrol and dictate the reports into a hand-held cassette recorder. This new reporting method resulted in more hours dedicated to patrol duties and service to Milwaukee's citizens.

Micro-Computer Technologies - The Data Processing Division has promoted the use and installation of micro-computers for the individual Bureaus and Divisions to meet their expressed need, be it Administrative, Office Automation, or Criminal Investigations. Installed micro-computer systems are operating in the Data Processing Division, Research and Development Bureau, Crime Prevention Division, and Vice Control Division.

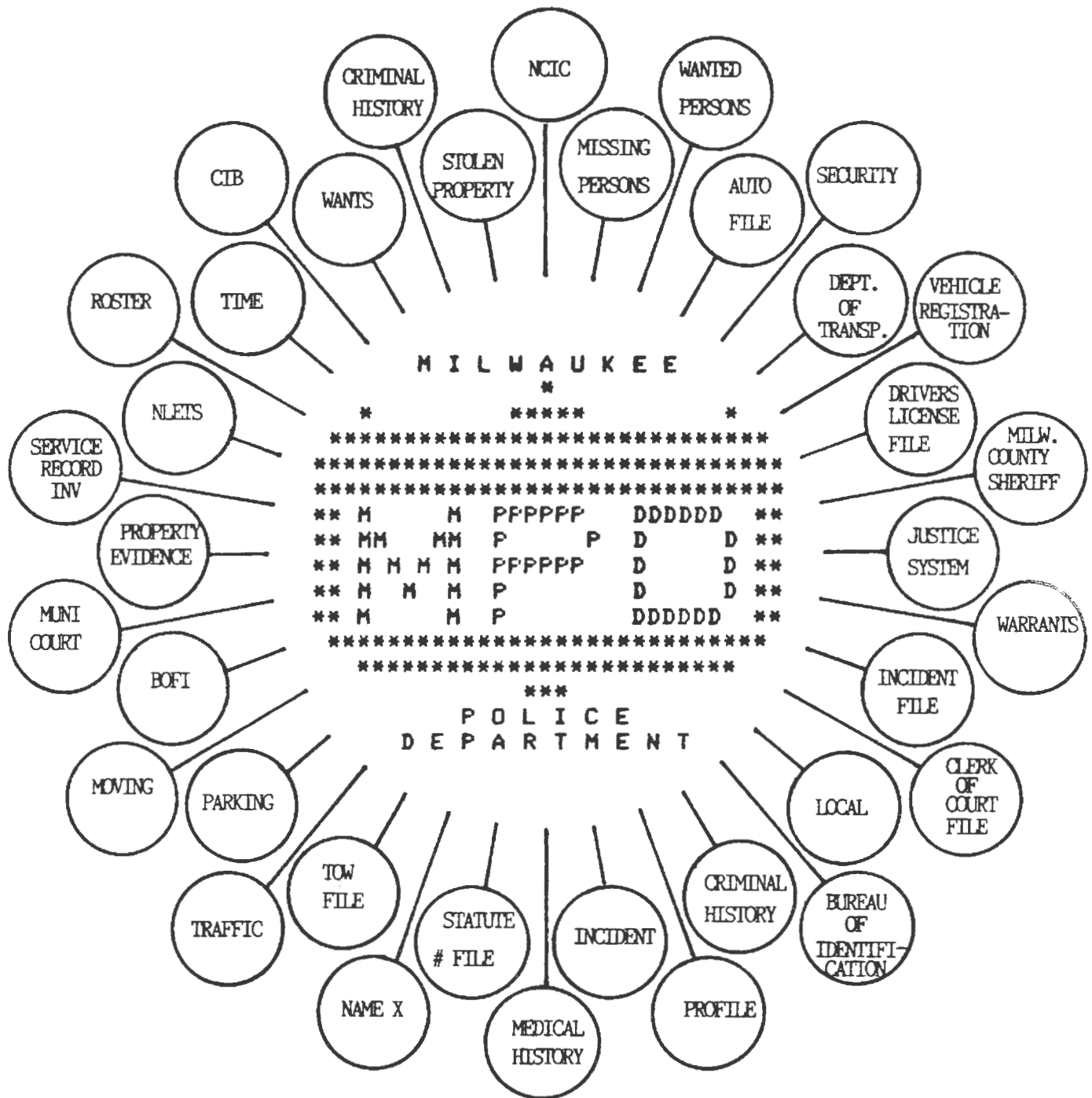


## MILWAUKEE POLICE DEPARTMENT

## TERMINAL NETWORK



MILWAUKEE POLICE DEPARTMENT  
COMPUTERIZED DATA FILES





# PERSONNEL/ADMINISTRATION BUREAU

The majority of the non-technical line support is consolidated in this Bureau. The Bureau commander, an Inspector of Police, is directly responsible for the performance of this Bureau and responds directly to the Chief.

## Administrative Division

This division is headed by a Deputy Inspector of Police whose primary responsibilities include the preparation and justification of department budgets and administration of the Police Department's day-to-day business operations.

Budget and Finance Section - A Captain heads this section and is responsible for the processing of requisitions and disbursements, preparations and maintenance of financial statements and records, the performance of other fiscal activities required by the department, and records relating to the Department payroll.

Personnel Section - The staff of this section is responsible for the wide range of activities that constitute a comprehensive personnel program, as well as employee negotiations and grievance procedures. The commander of this bureau takes an active part in these procedures as they effect labor negotiations.

Medical Section - This section monitors the status of personnel on sick or injury leave and maintains such records as may be required by the Chief of Police.

Property Control Section - The Property Control Section is assigned custodial responsibilities for the storage of found and recovered property and evidence, the storage and inventory of department property, and the security of property in custody. This section is managed by a Custodian of Police Property & Stores. The Stores section is housed at the Safety Academy.

Maintenance Services Section - The Police Buildings Management Supervisor oversees the maintenance of all department buildings and grounds, property, automotive and other equipment (except communications equipment).

Print Shop Section - This section provides all Department in-house printing needs and is housed at the Safety Academy.

# TRAINING BUREAU

This bureau, commanded by an Inspector of Police, is responsible for all training activities.

The Training Bureau is charged with the responsibility of providing training, directing crime prevention activities, developing police-community relations programming, distributing uniforms and equipment, and developing auxiliary police services.

Recruit instruction is mandated by the State of Wisconsin which requires that every certified police officer receive a minimum of 240 hours of training dealing with the basics of law enforcement. Eighty (80) hours of optional training is also reimbursable from the Wisconsin Training Fund.

The Milwaukee Police Department provides 22 weeks of training for all entrance level police officers and an additional 40 hours of in-service training each year.

The Training Bureau is also charged with providing instruction for other newly hired personnel and providing regular updates in procedures.

## Training Division

The Captain in charge of this division is responsible for providing intensive recruit, in-service, supervisory, command, and specialty training for all department members. As division head, he also controls and coordinates the activities of:



Special Services Section - This section provides any other special needs of the Department relative to training; i.e., seminars, emergency government, etc.

Equipment Section - This section operates uniform control and inspection as well as other equipment presently assigned under their direction.

Auxiliary Police (Reservists) - In order to be successful, the Department has emphasized the need for developing volunteerism among our citizens. Our auxiliary police section, which has the responsibility to assist the Department in extreme emergencies, is an excellent example of such volunteers. This group of men and women have offered endless time and effort in improving our community's quality of life.



### Crime Prevention Division

The Crime Prevention Division was officially created on January 8, 1985, by Chief Robert J. Ziarnik and became fully staffed and operational in March of 1985. This division is commanded by a Captain of Police. The primary focus of the newly created Crime Prevention Division was the development of the Neighborhood Watch/Block Watch program and other basic crime prevention components such as personal safety, business security, and anti-molestation.

It was anticipated that Crime Prevention programming would enhance Police/Community Relations throughout the City and that expectation has been fulfilled. In addition to Crime Prevention program development, the Crime Prevention Division became responsible for receiving and scheduling many of the Department's requests for public appearances and tours of various Department facilities. This division was mandated to develop and coordinate requests for speakers and to assist in the development of sufficient personnel to carry out that mission.

During 1985, the Crime Prevention Division started nearly 300 new block watches in the target area, conducted 300 tours of Department facilities, scheduled 1660 public appearances throughout the City, presented more than 1200 speeches or other public contacts, and provided training to police officers from throughout the Metropolitan Milwaukee area, Milwaukee Police Auxiliaries, and citizen volunteers.

The evaluation period for the Pilot Crime Prevention Program ends June 30, 1986. The Crime Prevention Division looks forward to expanding the program city-wide in an attempt to assist the entire department and the citizens of the City of Milwaukee in continuing our tradition of having the safest city of our size in the nation.



Community Relations Section - The Community Relations Section established a variety of community relations programs that could effectively service both the department and the community, limited only by the resourcefulness and imagination of the personnel assigned to this section.



POLICE OFFICER CITATIONS

CLASS "A"

P.O. Rosario J. Collura  
P.O. Leonard R. Lesnieski

CLASS "B"

P.O. Michael R. Strampe  
P.O. Steven J. Wesolowski

CLASS "C"

P.O. Timothy A. Klug

CLASS "D"


P.O. Daniel N. Schmerse  
P.O. Mark A. Meyer  
P.O. Michael A. Zimmerman  
P.O. Charles A. Berard  
P.O. David D. Sarya

CLASS "E" COMMENDATORY LETTER

P.O. Susan T. Becker  
Parking Checker Richard D. Bensman  
P.O. Steven J. Bolyard  
P.O. Ronald A. Brueckner  
Lt. Dean J. Collins  
P.O. Sigfredo Cruz  
Det. James G. Dlugi  
P.O. Roberto A. Duarte  
P.O. Michael W. Dubis  
P.O. Arthur J. Elm  
P.O. Aaron Froh  
P.O. Keith L. Gaines  
P.O. Judith M. Gonzalez  
Det. Frederick G. Haas  
P.O. Joni D. Marcus  
P.O. Jeffrey R. Harvey  
P.O. Michael E. Heikkinen  
Sgt. Joseph J. Hoeller

P.O. Ronnie Horton (2)  
P.O. Kenneth E. Jones  
Sgt. Jesse Kedziora  
P.O. Michael E. Kuspa  
P.O. Randolph R. Luedke  
P.O. Simo Miljus  
P.O. Mark C. Newell  
P.O. Lawrence E. Pierce  
P.O. Joseph D. Pintor  
P.O. Armando L. Quinones  
P.O. Francisco Riojas  
P.O. Bryan L. Schneider  
P.O. Janet F. Schuster  
P.O. Michael A. Schuster  
P.O. Harlan H. Steinke  
P.O. Michael T. Valuch  
P.O. Elijah H. Williams  
P.O. Michael R. Ziarnik

CITIZEN AWARDS OF MERIT

**POLICE DEPARTMENT**  
**MILWAUKEE**  **WISCONSIN**


*Award of Merit*

PRESENTED TO \_\_\_\_\_

*for Distinguished Service*

TO THE MILWAUKEE POLICE DEPARTMENT AND THE CITIZENS  
OF OUR COMMUNITY IN OUR EFFORTS TO MAINTAIN A SAFE,  
CRIME - FREE AND ORDERLY COMMUNITY.

DATE \_\_\_\_\_ CHIEF OF POLICE \_\_\_\_\_



**POLICE DEPARTMENT**  
**CITY OF**  
**MILWAUKEE, WISCONSIN**  
**OFFICIAL CITATION**

Whereas: \_\_\_\_\_

A member of the Milwaukee Police Department, Milwaukee, Wisconsin, of the rank of \_\_\_\_\_

did on the \_\_\_\_\_ day of \_\_\_\_\_, in the year of our Lord Nineteen Hundred and \_\_\_\_\_


perform a deed of outstanding service, with exceptional devotion to duty, loyalty to his oath of office, and to his obligations  
as a law enforcement officer, in a praiseworthy and admirable manner exemplifying to a high degree the traditions of the  
Milwaukee Police Department and the law enforcement profession, and . . . .

Whereas, the Chief of Police and the Milwaukee Police Citation Board have caused proper investigation to be made and after  
carefully considering all the facts, do therefore affirm . . . .

This Citation be awarded on the \_\_\_\_\_ day of \_\_\_\_\_, in the year of our Lord Nineteen Hundred and \_\_\_\_\_

\_\_\_\_\_

Chief of Police



POLICE OFFICER CITATIONS



CITIZEN AWARDS OF MERIT

ADE, MATTHEW R., age 19  
ANDERSON, EDNA V., age 68  
BADZINSKI, DELPHINE R., age 54  
BART, DANIEL J., age 18  
BINK, FRANK J., age 27  
BLAU, NATHAN, age 31  
BRAUN, JOHN W., age 36  
BERRY, DWAIN E., age 31  
BROLICK, KEVIN, age 21  
BROWN, LOVELL J., age 36  
BUSH, RICHARD A., age 29  
CANNON, MARY T., age 67  
CARTER, DIANNA L., age 22  
CARTER, JERRY, age 40  
CASKINETTE, JOHN E., age 35  
CLARKE, ROBERT L., age 32  
COBB, DORIS, age 59  
COBB, MARIA A., age 23  
COLEMAN, ELMER L., age 45  
COLEMAN, SMYLE, Jr., age 48  
CONDON, MATTHEW, age 16  
DANIEL, BOBBY G., age 45  
DAMRO, ROBERT, age 52  
DICKY, DAVID C., age 30  
DUNCAN, JOHN H., age 31  
EBERT, MICHAEL R., age 25  
EVANS, CHARLES, age 57  
EVANS, LILY, age 52  
FABER, GERALD E., age 44  
FRANZ, KENNETH, age 50  
GARRETT, MICHAEL D., age 34  
GILBERT, CHRISTOPHER, age 23  
GOSCINIAK, MARK J., age 29  
GRENNIER, PHILLIP P., age 38  
GROCHOLSKI, GEORGE, age 63  
GRONKOWSKI, JOHN, age 17  
ABDUL-HAGG, RICHARD, age 20  
HARMEYER, JOSEPH C., age 58  
HARRELL, LASHUNDA, age 19  
HARRIS, LILLIAN, age 33  
HECKER, JOHN A., age 24  
HOWARD, EVAN B., age 35  
INMAN, EMMA, age 71  
JOHNSON, STEVEN M., age 28  
JOHNSON, TOMMY, age 52  
KACHELMEIER, LORI, age 27  
KAPFHAMMER, RICHARD W., age 24  
KESKEY, NANCY, age 19  
KESKEY, PETER, age 20  
KIEFER, ROGER E., age 31  
KLOPATAK, GARY J., age 26  
KOPFMANN, DAVID S., age 24

KOSANKE, KEITH W., age 36  
KOVACS, LOUIS S., age 24  
KOWALSKI, JEAN N., age 39  
KRAUSE, PAUL C., age 20  
KRAWCZYK, KENNETH J., age 20  
KRYSHAK, MARY BETH, age 32  
KUBENIK, KENNETH C., age 38  
KUBENIK, NANCY, age 40  
LONERGAN, ROBERT L., age 50  
LOTT, JASPER, age 24  
MAC LAURN, CAROLYN J., age 28  
MANDERS, ROBERT J. II, age 23  
MARTIN, DONALD J., age 31  
MAXIE, EURA LEE, age 25  
MC NAMARA, THOMAS J., age 38  
MC NAMARA, VIKTORIA, age 35  
MITCHELLY, ROBERT, age 30  
MOFFETT, MICHELLE D., age 19  
MOORE, CHARLES, age 29  
MOORE, JOSEPH R., age 32  
MURRAY, JOYCE M., age 52  
NELMS, BENNY, age 32  
NICHOLS, LESS D., age 41  
NUNNERY, KENNETH, age 20  
ONOPO, PAUL, age 66  
PACKARD, GERALD A., age 40  
PEARSON, KEVIN I., age 23  
PILLER, JEANETTE, age 53  
PRICKRIL, TODD W., age 28  
REICHGELD, BLAKE A., age 35  
RICHTER, JOHN E., age 36  
RIGO, ANTHONY, age 22  
ROBERTS, DAVID, age 30  
ROBERTS, DAVID M., age 32  
ROGUS, JOHN R., age 25  
ROSER, DAVID A., age 17  
ROSER, RICHARD C., age 13  
ROSS, RICHMOND LEE, age 34  
ROZINA, JANINE  
ROZINA, THOMAS  
RUITENBURG, WILLIAM B., age 30  
RUSSELL, JOHNNY E., age 33  
RUSSELL, ROSE, age 30  
RYDZ, RAYMOND G., age 34  
SAMPSON, TOMMY L., Jr., age 13  
SAVAGE, GALE A., age 22  
SAVAGE, GREGORY F., age 22  
SAWI, BOCKARI, age 30  
SCHICK, DENNIS G., age 36  
SCHLECT, STEVEN A., age 23  
SCHNEIDER, TIMOTHY P., age 23  
SCHWARTZ, GERTRUDE, age 49

SCHWARTZ, ROGER, age 52  
SCHWIGEL, JEFFREY, age 29  
SERAMUR, ELIZABETH, age 22  
SMITH, ANDRE, age 20  
SPINKS, BENJAMIN J., age 49  
SUTHERLAND, LAURA E., age 37  
SWENSON, ELIZABETH C., age 74  
TAYLOR, BRENDA J., age 31  
TELFORD, JAMES C., age 49  
TILLMAN, JAY J., age 27  
TONEY, JAVON, age 10  
WAGNER, EDITH R., age 39  
WARWICK, DANIEL, age 25  
WENNESHEIMER, ANN MARIE, age 15  
WENTZEL, WILLIAM A., age 37  
WHITTOW, CLAUDIA J., age 31  
WILLIAMS, RANDALL C., age 29  
WILLIAMSON, ARTIS, age 30  
ZAK, JAMES J., age 20  
ZANIEWSKI, SANDY, age 31  
ZENUTICZ, ANN, age 33  
ZENUTICZ, RICHARD, age 37  
ZVAIGNITIS, ARTHUR, Jr., age 24

# RETIREMENTS

RANK	NAME	RETIREMENT DATE	APPOINTMENT DATE	LENGTH OF SERVICE
P.O.	Wallace Hoeh	1/2/85	8/10/53	31
Pol. Matron	May E. Day	1/10/85	10/18/68	16
Clk Typ II	Artys A. Staley	1/16/85	11/11/74	10
Det.	Harlove R. Pieske	1/16/85	10/20/50	34
P.O.	Frank M. Kaminski	1/17/85	8/11/52	32
P.O.	Richard W. Wagner	1/17/85	1/25/54	30
P.O.	Albert J. Hepfner	1/18/85	1/25/54	30
P.O.	John Vollbrecht	1/20/85	7/2/51	33
Det.	Dennis A. Peters	1/24/85	5/24/65	19
P.O.	Darrell Heinzen	1/25/85	2/4/57	27
P.O.	Richard Cattani	1/28/85	5/7/56	28
P.O.	Wilfred Buchanan	1/24/85	4/6/53	31
P.O.	Robert Feldhusen	1/31/85	5/10/54	30
P.O.	Donald Nelson	2/2/85	8/11/52	32
P.O.	Robert Kowalski	2/6/85	4/22/57	27
Sgt.	William Waters	2/6/85	4/6/53	31
P.O.	Harry Daroszewski	2/16/85	4/22/49	35
P.O.	Raymond Grzona	2/19/85	8/10/53	31
Clerk IV	Lorraine Ferraro	2/21/85	9/2/54	30
Sgt.	Gustav Schultz	2/21/85	1/7/52	33
P.O.	Edmund Schircely	2/23/85	1/7/52	33
Sgt.	Edward Fisher	2/25/85	5/10/54	30
Det.	Thaddeus Glapa	2/25/85	2/6/56	29
P.O.	Edward Szymborski	3/17/85	1/25/54	31
P.O.	Robert Gnatzig	3/24/85	1/25/54	31
Clk Typ II	Phyllis Tatreau	3/27/85	1/9/67	17
P.O.	Gordon Smythe	4/6/85	4/6/51	34
P.O.	Berg O'Hanian	4/22/85	1/17/55	29
P.O.	Aaron Hall, Jr.	4/26/85	4/18/55	30
P.O.	John Moe	5/4/85	11/2/53	31
Designate of The Chief	Leonard R. Boncel	5/31/85	1/7/46	39
Capt.	Ralph Brown	6/19/85	1/3/47	38
P.O.	Robert Nowicki	7/6/85	1/25/54	30
Clk Typ II	Doris Nordstrom	7/23/85	7/21/75	10
P.O.	Thomas Enters	7/23/85	6/23/58	27
P.O.	Duane Marshall	7/23/85	6/23/58	27
Sgt.	John J. Kraus	7/26/85	5/7/56	29
Designate of The Chief	Louis Wiesmueller	7/30/85	1/5/42	43
Lt. of Pol. (Garage)	Richard Merrell	7/31/85	10/8/56	28
Ident Tech	John Tsopelas	8/6/85	11/29/54	30
Sgt. (Garage)	Robert J. Jaster	8/10/85	9/6/55	29
P.O.	Rhody Helminiak	8/10/85	8/9/54	31
P.O.	Raymond Trinko	8/10/85	10/8/51	33
Capt.	William Joers	8/10/85	8/11/52	33
P.A.O.	Robert Hackney	8/29/85	1/25/54	31

# RETIREMENTS (cont'd)

P.O.	Robert Matheny	9/10/85	4/6/53	31
P.O.	Kenneth Karlic	9/12/85	1/25/54	31
Lt.	Walter Shadof	9/21/85	10/8/51	33
P.O.	Peter Wilhelm	9/24/85	8/9/54	31
Capt.	Edmund Kazmierski	9/28/85	8/11/52	33
Det.	Joseph Miszewski	10/2/85	4/16/41	44
Det.	Gordon Watters	10/6/85	2/6/56	29
P.O.	William Kasten	10/11/85	1/5/53	32
P.O.	Leon L. Kramer	10/19/85	1/17/55	30
Lt. of Det.	William Verville	10/20/85	4/22/49	36
P.O.	John Speck	10/24/85	1/7/52	33
Dep. Insp. of Traffic	Arnold R. Kramer	11/1/85	1/2/48	37
Det.	James Dlugi	11/7/85	4/6/51	34
Lt.	Harry J. Durovy	11/27/85	8/1/50	35
P.O.	Ralph Wobszal	12/24/85	1/3/47	38

## IN MEMORIAM ACTIVE PERSONNEL

RANK	NAME	APPOINTED	DECEASED
P.O.	Rosario J. Collura	10/10/66	3/19/85
P.O.	Leonard R. Lesnieski	3/24/69	3/19/85
P.O.	Lawrence W. Patten	6/23/58	5/6/85
P.O.	Edward A. Sytkowski	2/6/56	9/16/85
Sgt.	Michael G. Elliott	9/3/63	12/6/85

SALARY SCHEDULE  
POSITIONS WITH POLICE POWERS

Auth.	Actual		Max. Biweekly
1	1	Chief of Police	\$2,680.34
1	1	Asst. Chief of Police	2,382.81
1	1	Deputy Chief of Police	2,118.29
5	5	Inspector of Police	1,883.17
1	0	Dep. Insp. of Traffic	1,741.09
7	7	Dep. Insp. of Police	1,741.09
31*	31*	Captain of Police	1,547.82
31	24	Lieutenant of Police	1,376.03
28	20	Lieut. of Detectives	1,376.03
1	0	Admin. Lieut of Detectives	1,376.03
1	1	Supv. Det. Bur. Admin.	1,376.03
1	1	Supv. Police Radio Shop	1,376.03
1	0	Lieut. of Police (Garage)	1,323.10
2	0	Designate of Chief	1,323.10
1	0	Chief Oper. of Pol. Alarm	1,323.10
1	1	Chief Oper. of Pol. Data Comm.	1,323.10
2	2	Police Elect. Tech. Foreman	1,272.25
1	0	Chief Document Examiner	1,256.89
2	2	Asst. Chief Oper. of Pol. Alarm	1,223.31
10	10	Police Elect. Tech.	1,216.96
1	1	Pol. Audio-Visual Specialist	1,216.96
166	134	Police Sergeant	1,176.27
8	5	Admin. Police Sergeant	1,176.27
3	2	Police Sergeant (Garage)	1,176.27
2	2	Police Ident. Supv.	1,176.27
235	217	Detective	1,137.15
1	1	Cust. Pol. Prop. & Stores	1,137.15
3	4	Document Examiner	1,118.78
1	0	Latent Print Examiner	1,118.78
51	41	Police Alarm Operator	1,099.90
1	1	Narc Cont. Officer	1,099.90
1	1	Traffic Court Cood Officer	1,099.90
1	0	Muni. Crt. Liaison Officer	1,099.90
19	17	Ident. Technician	1,038.39
1423	1509	Police Officer	1,032.10
5	5	Policewoman	1,032.10
2	2	Asst. Cust. Pol. Prop. & Stores	1,032.10
4	4	Police Matron	1,032.10

\* One Position Assigned to Mayor's Office

1985 FISCAL YEAR ENDED 12/28/85

SALARY SCHEDULE  
CIVILIAN POSITIONS

Auth.	Actual		Max. Bi-Weekly
1	1	Pol. Maintenance Serv. Manager	\$1,401.79
1	1	Accountant III	1,296.03
1	1	Asst. Pol. Maint. Serv. Manager	1,152.18
2	2	Police Maintenance Supv. II	984.91
1	1	Police Employment Coordinator	947.00
3	0	Management Admin. Assistant I	947.00
1	1	Printing & Stores Supervisor	911.31
5	5	Heating & Ventilating Mech. II	892.89
4	4	Maintenance Mech.	855.71
1	1	Garage Custodian	817.18
1	1	Vehicle Services Assistant	807.17
2	2	Clerk IV	797.27
6	7	Clerk Steno IV	797.27
1	0	Law Steno III	797.27
2	1	Computer Operator II	797.27
1	1	Account Clerk II	797.27
7	7	Garage Attendant	768.57
33	30	Custodial Worker II	759.51
1	1	Account Clerk I	758.23
2	2	Stores Clerk II	758.23
1	1	Duplicating Equipment Oper. II	758.23
9	8	Clerk Steno III	758.23
0	1	Computer Operator I	758.23
2	2	Clerk III	726.99
12	12	Clerk Typist III	726.99
34	34	Parking Checker	709.91
7	7	Key Entry Operator II	707.70
11	8	Clerk Steno II	707.70
0	3	Custodial Worker I	679.22
76	58	District Station Clerk	676.53
78	64	Clerk Typist II	676.53
1	1	Key Entry Operator I (0.50 man year)	646.49
0	0	Key Entry Operator I	646.49
0	4	Clerk Steno I	646.49
0	31	Clerk Typist I	615.27
45	45	Police Aide	611.36
5	5	Police Physician	575.37

SEPARATION FROM SERVICE	WITH POLICE POWERS	WITHOUT POLICE POWERS
Voluntary Resignation	11	12
Retirement on Pension Annuity	54	4
Retirement on Pension Disability	21	0
Killed in Line of Duty	2	0
Deceased	3	0
Dismissed	5	0
Workmen's Compensation	0	0
Leave of Absence	8	4
Transfers	3	11
Military Leave	1	3
	<hr/> 108	<hr/> 34

#### ADDITIONS TO SERVICE

Recruited During the Year	92	97
Returned from Military Service	0	1
Returned from Disability	1	0
Returned from Leave of Absence	0	1
Workmen's Compensation	1	0
Transfers	0	1
	<hr/> 94	<hr/> 100

#### CIVILIAN

Employees Promoted to Police Officers	+24	-24
---------------------------------------	-----	-----

#### RECAP

Present for duty January 1, 1985 .....	2,354
Separations during the year .....	142
Additions during the year .....	194
Present for duty December 28, 1985 .....	2,406

	Civilian Employees	Personnel with Police Powers	Total Personnel
Authorized Strength January 1, 1985	354	2066	2420
Positions Authorized During 1985	3	0	3
Positions Deleted During 1985	0	10	10
Total Authorized as of December 28, 1985	357	2056	2413
Actual Strength as of December 28, 1985	353	2053	2406
Vacancies - December 28, 1985	4	3	7

# FISCAL OPERATIONS

## EXPENDITURES:

Salaries and Wages .....	\$66,212,087.00
Fringe Benefit Costs .....	24,430,110.00
Supplies and Materials .....	1,807,808.00
Services .....	3,913,287.00
Equipment and Facility Rent .....	68,314.00
 TOTAL OPERATING COSTS .....	 96,431,606.00
Additional and Replacement Equipment .....	1,423,329.00
 TOTAL .....	 97,854,935.00

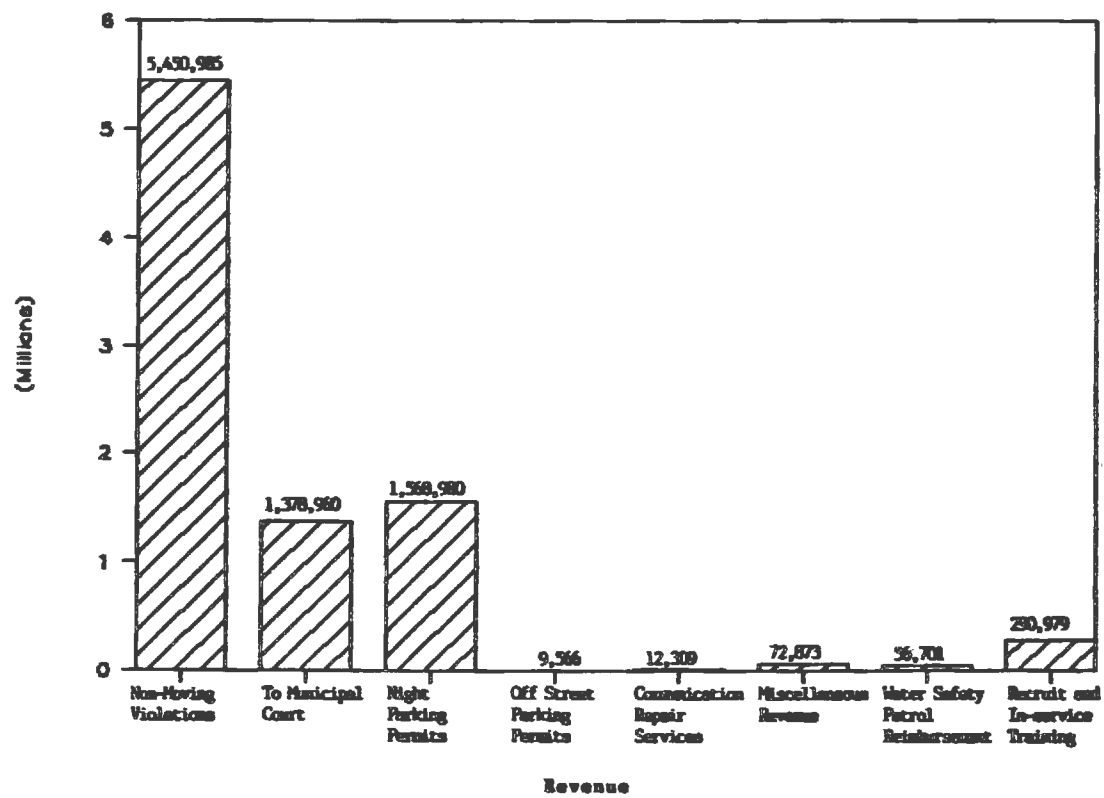
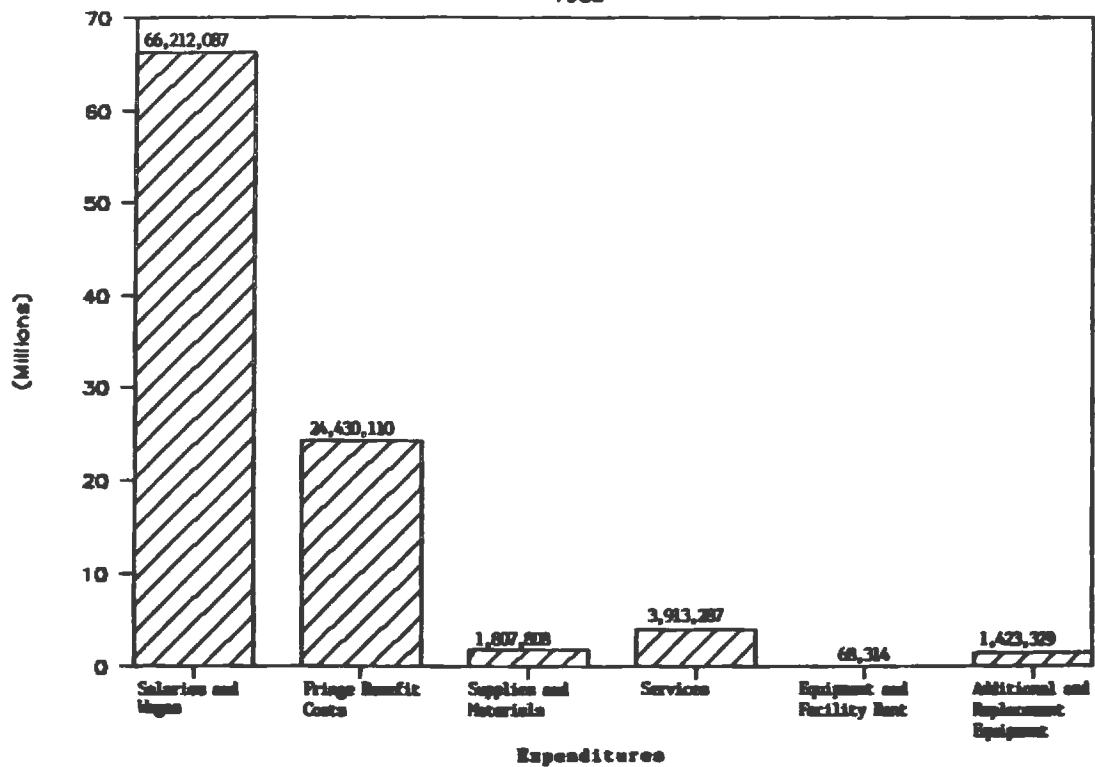
## REVENUE:

Forfeitures and Stipulations	
Non-Moving Violations .....	5,450,985.00
To Municipal Court .....	1,378,960.00
Parking Permits Sold-Night (on street) .....	1,568,980.00
Parking Permits Sold - Off street .....	9,566.00
Communication Repair Services Rendered .....	12,309.00
Miscellaneous Revenue .....	72,873.00
Reimbursement from State of Wisconsin	
Water Safety Patrol .....	56,701.00
Recruit and In-Service Training .....	290,979.00
 TOTAL .....	 8,841,353.00

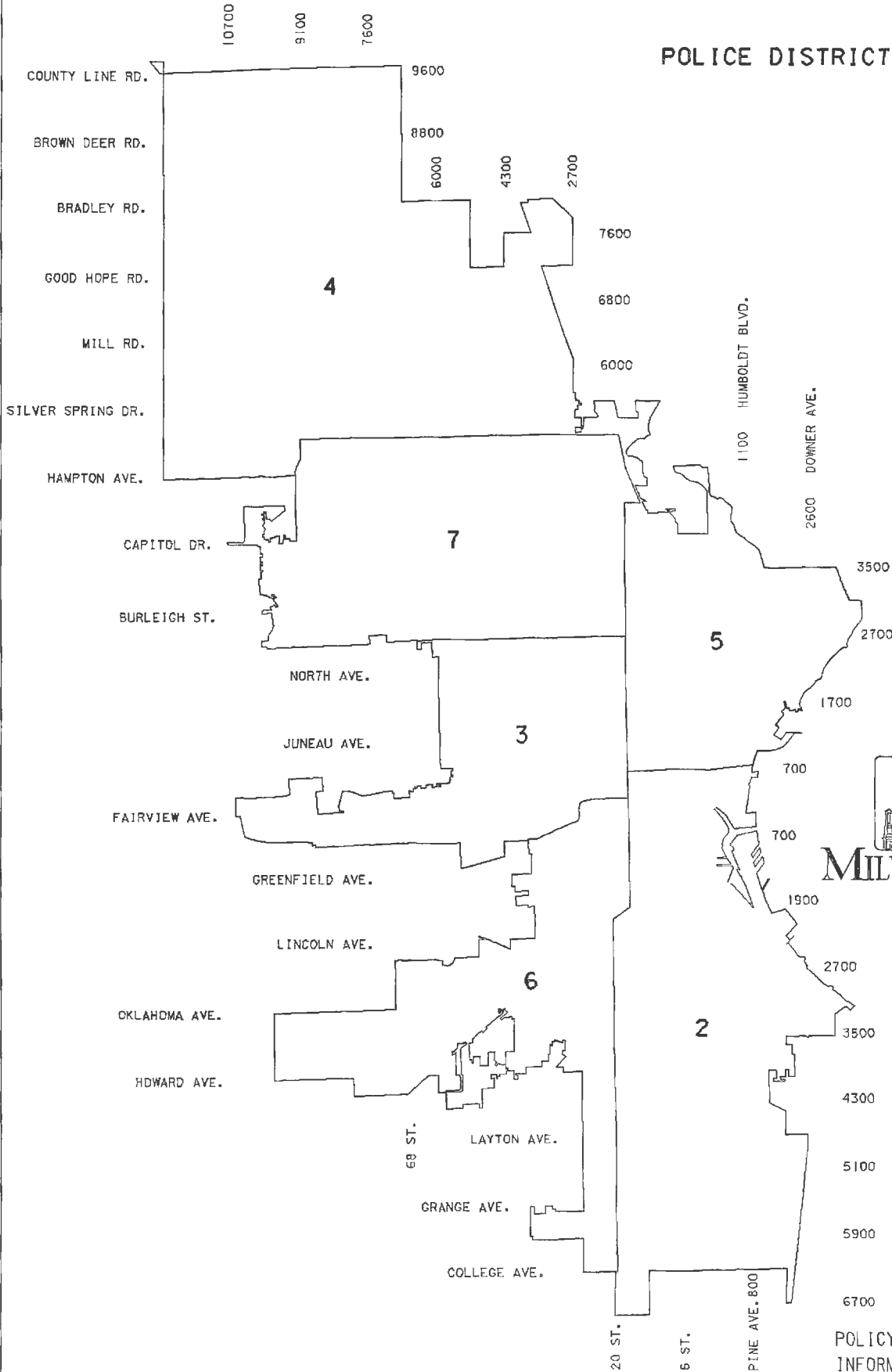


# FISCAL OPERATIONS

1985



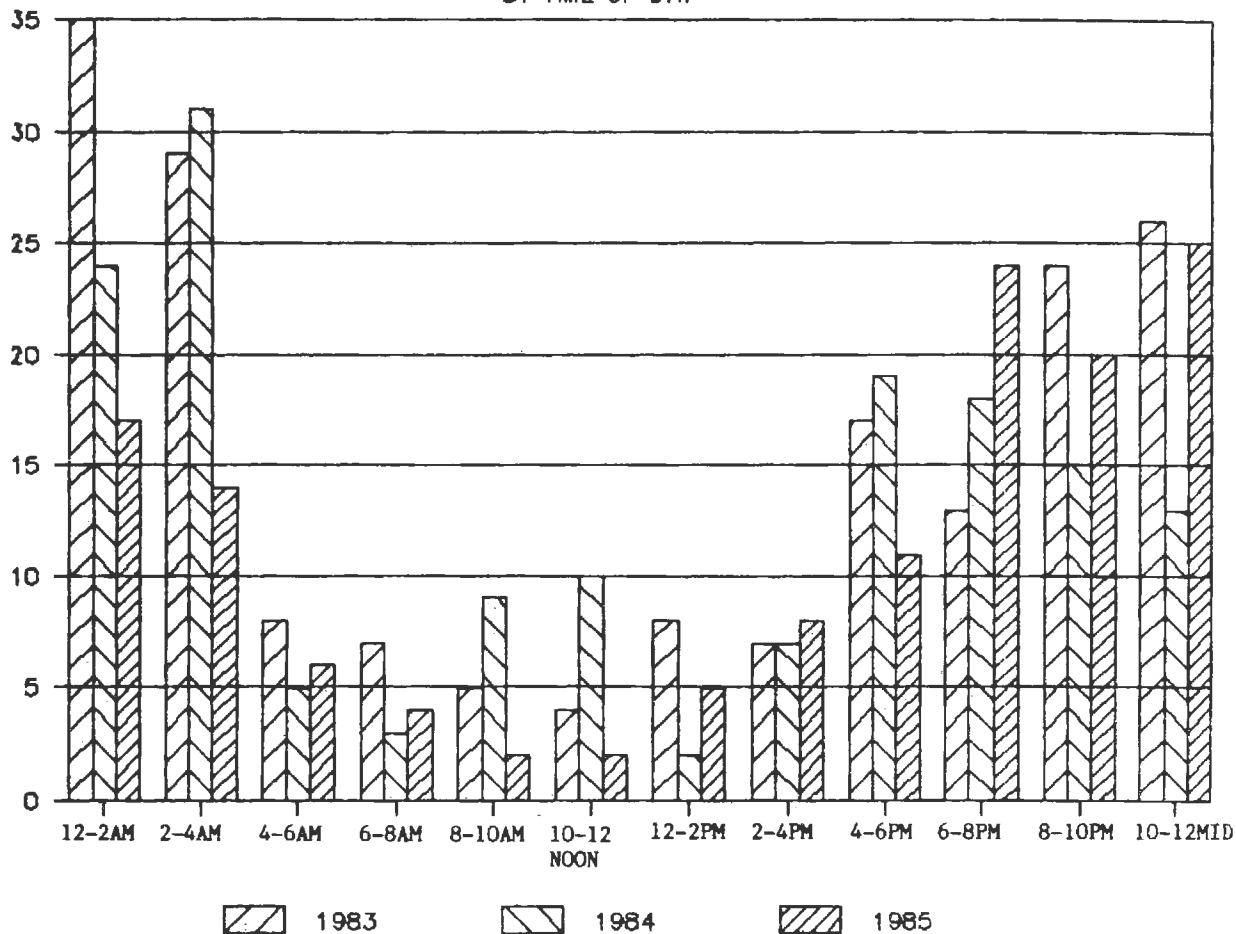
# POLICE DISTRICTS: 1985



POLICY DEVELOPMENT  
INFORMATION SYSTEM

# OFFICERS KILLED OR ASSAULTED

BY TIME OF DAY

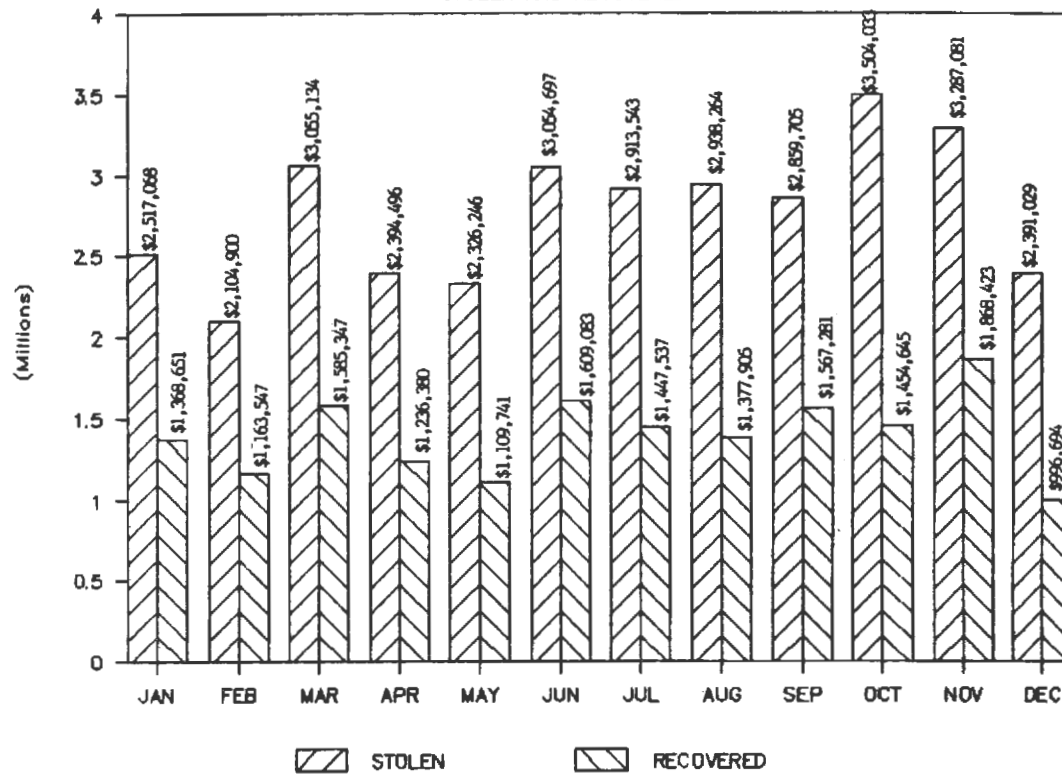


## OFFICERS ASSAULTED BY WEAPON & INCIDENT

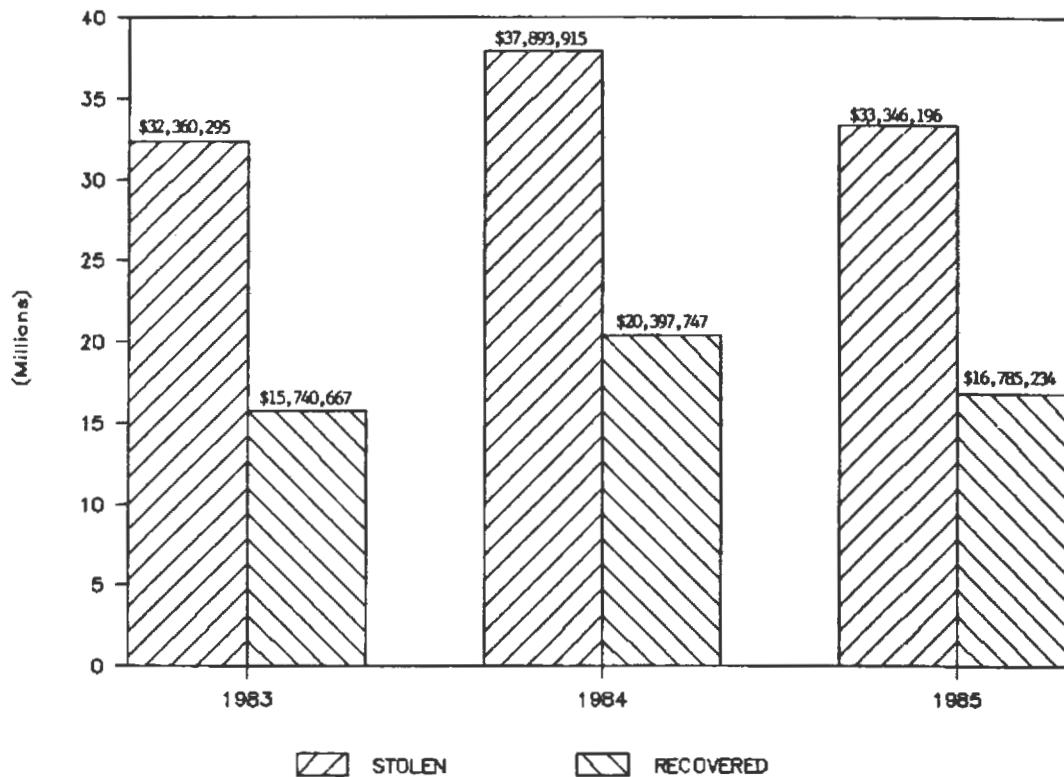
	1985					
	FIREARM	KNIFE	OTHER WEAPON	HANDS	TOTAL	ASSAULTS CLEARED
Responding to disturbance	1			28	29	29
Burglary in progress			1	2	3	3
Robbery in progress				1	1	1
Attempting other arrests	1		2	53	56	56
Civil disorder						
Handling prisoners				33	33	33
Investigating suspicious persons	2			4	4	4
Ambush - No warning						
Mentally deranged		1		4	4	4
Traffic pursuits and stops				6	6	6
All other				2	2	2
<b>Total</b>	<b>4</b>	<b>1</b>	<b>3</b>	<b>133</b>	<b>138</b>	<b>138</b>
Number with injury	4	1	3	133	138	
Number without injury						

# 1985 PROPERTY

STOLEN AND RECOVERED

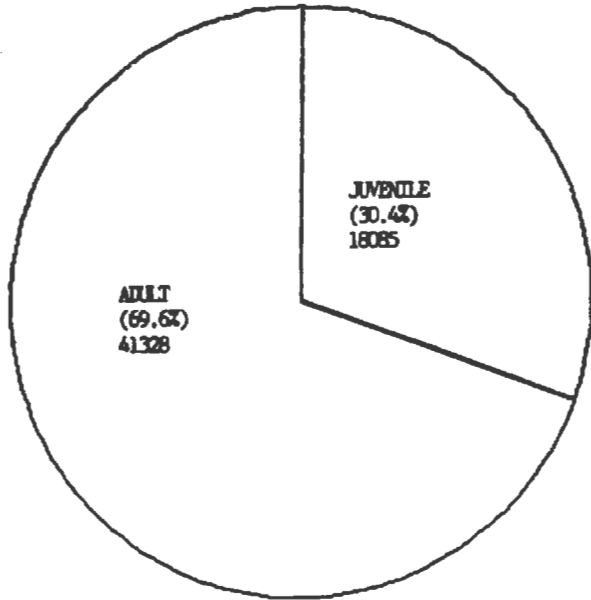


## STOLEN AND RECOVERED PROPERTY

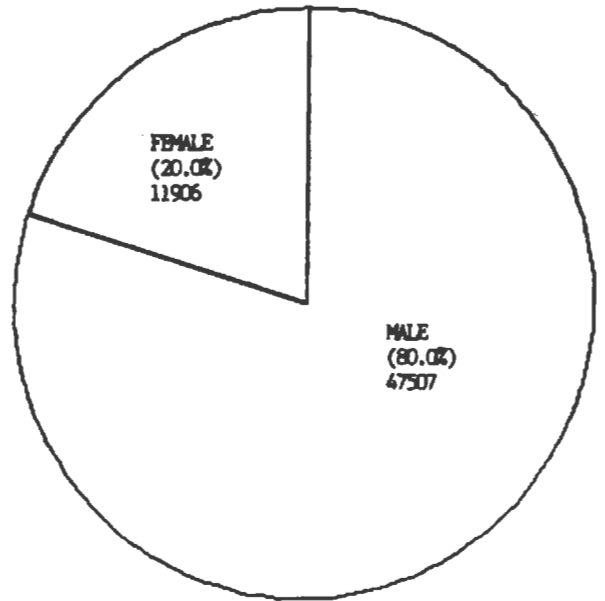


## 1985 ANNUAL ARREST STATISTICS

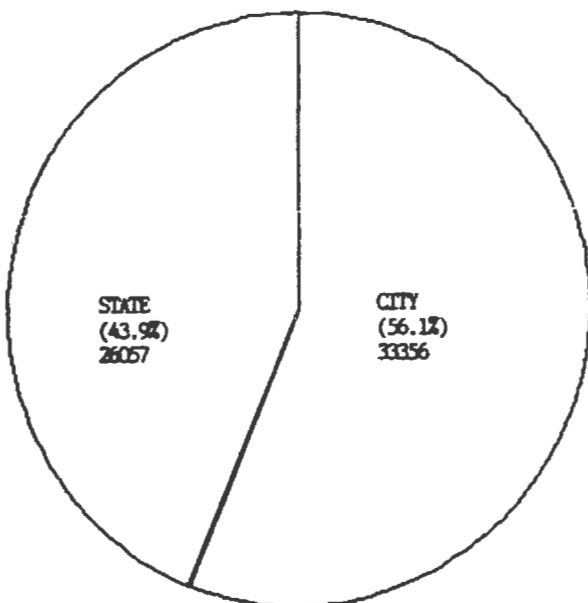
### JUVENILE VS. ADULT



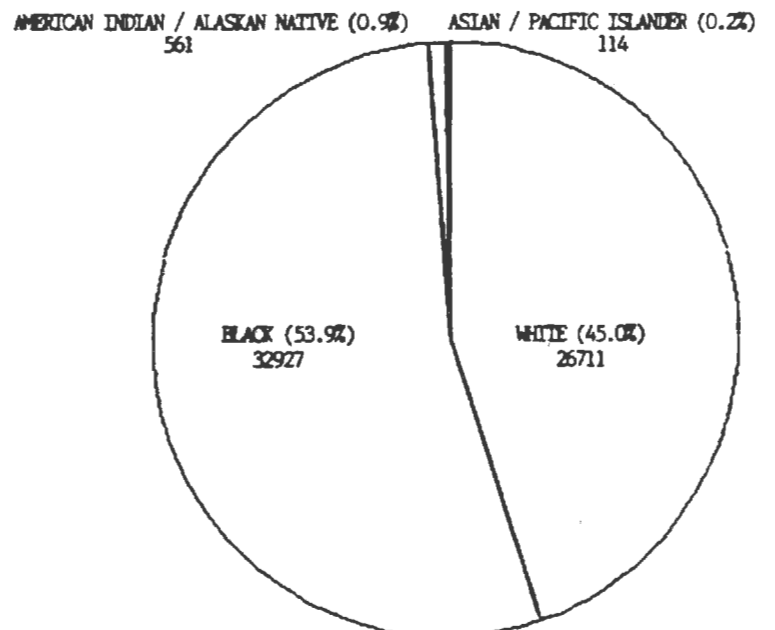
### MALE VS. FEMALE



### CITY CHARGES VS. STATE CHARGES



### PERCENT BY ETHNIC ORIGIN



# MAJOR CRIMES

## OFFENSES KNOWN TO THE POLICE

		KNOWN OFFENSES	UNFOUNDED OFFENSES	ACTUAL OFFENSES	CLEARED OFFENSES	JUVENILE OFFENSES
1A	MURDER NON-NEGL. MANSLAUGHTER	69	1	68	58	3
1B	MANSLAUGHTER BY NEGLIGENCE	2	0	2	2	0
2	FORCIBLE RAPE TOTAL	424	33	391	174	15
2A	FORCIBLE RAPE	364	33	331	155	13
2B	ATTEMPT TO COMMIT RAPE	60	0	60	19	2
3	ROBBERY TOTAL	2285	199	2086	661	168
3A	ROBBERY- FIREARM	830	60	770	262	39
3B	ROBBERY- KNIFE	294	38	256	84	17
3C	ROBBERY- OTHER DANGEROUS WEAPON	152	14	138	37	10
3D	ROBBERY- STRONG ARM (HANDS, ETC)	1009	87	922	278	102
4	ASSAULT TOTAL	6339	70	6269	2414	585
4A	ASSAULT- FIREARM	898	15	883	399	48
4B	ASSAULT- KNIFE	384	1	383	182	36
4C	ASSAULT- OTHER DANGEROUS WEAPON	195	1	194	76	14
4D	ASSAULT- HANDS, FEET, ETC.	52	0	52	21	1
4E	OTHER ASSAULT	4810	53	4757	1736	486
5	BURGLARY TOTAL	7803	21	7782	1047	361
5A	BURGLARY- FORCIBLE ENTRY	7433	18	7415	953	319
5B	BURGLARY- UNLAWFUL ENTRY WITHOUT FORCE	300	3	297	61	31
5C	BURGLARY- ATTEMPTED FORCIBLE ENTRY	70	0	70	33	11
6	LARCENY THEFT TOTAL EXCEPT MOTOR VEHICLE	27237	86	27151	2884	834
7	VEHICLE THEFT TOTAL THAN MOTOR VEHICLE	4993	39	4954	450	174
7A	THEFT- AUTO	4479	37	4442	403	164
7B	THEFT- TRUCK/BUS	166	2	164	16	4
7C	OTHER VEHICLE THEFT	348	0	348	31	6
GT	GRAND TOTAL	49152	449	48703	7690	2140

20 Cities Having Population Over 500,000 (1985 EST.)		Crime Index Total	Modified Crime Index Total		Forcible		Aggr. Assault	Burglary	Larceny Theft	Motor Vehicle Theft	Arson	MURDER
			Murder	Rape	Robbery	16 Cities had more						
1. New York, NY	1984	600,216	607,305	1,450	3,829	79,541	47,472	128,687	250,759	88,478	7,089	RAPE
	1985	601,467	609,146	1,384	3,880	79,532	50,356	124,838	262,051	79,426	7,679	15 Cities had more
2. Los Angeles, CA	1984	297,183	302,303	759	2,347	27,323	21,013	68,696	128,538	48,507	5,120	ROBBERIES
	1985	294,404	299,742	777	2,318	27,938	21,799	63,963	125,968	51,641	5,338	
3. Chicago, IL	1984	276,240	278,552	741	2,261	28,535	28,420	55,240	117,408	43,635	2,312	ASSAULTS
	1985	277,260	279,286	666	1,792	26,892	29,096	52,658	121,264	44,892	2,026	
4. Houston, TX	1984	149,199	151,200	473	1,269	9,157	4,256	38,201	67,038	28,805	2,001	BURGLARIES
	1985	155,910	157,889	457	1,711	9,589	4,704	40,207	67,496	31,746	1,979	
5. Philadelphia, PA	1984	82,529		264	937	9,365	5,034	18,318	35,286	13,325		LARCENY
	1985	83,667		273	1,021	9,381	5,534	19,007	35,815	12,636		
6. Detroit, MI	1984	161,586		514	1,519	18,352	6,182	44,360	48,154	42,505		VEHICLE THEFTS
	1985	149,954	151,207	635	1,575	16,769	6,925	40,385	46,014	37,651	1,253	
7. Dallas, TX	1984	113,446	114,264	294	1,022	4,841	5,953	29,956	63,096	8,284	818	ARSON
	1985	129,496	130,256	301	1,141	6,051	6,863	31,460	73,401	10,271	760	
8. San Diego, CA	1984	64,366	64,795	103	393	2,616	2,819	15,248	34,428	8,759	429	
	1985	67,893	68,273	96	338	3,062	2,754	16,363	35,220	10,060	380	
9. Phoenix, AZ	1984	71,279	71,789	101	525	2,106	3,640	19,340	41,128	4,439	510	
	1985	82,529	83,126	95	635	2,425	4,372	23,346	46,743	4,913	597	
10. San Antonio, TX	1984	75,867	76,426	160	745	2,657	1,826	23,648	39,894	6,937	559	
	1985	83,591	85,164	180	824	2,683	1,706	24,531	46,163	7,504	573	
11. Honolulu, HI	1984	44,560	45,004	25	255	1,117	553	9,320	30,191	3,099	444	
	1985	42,048	42,475	36	248	965	552	8,989	28,837	2,421	427	
12. Baltimore, MD	1984	65,363	65,940	215	564	8,002	6,800	13,837	30,538	5,415	577	
	1985	66,121	66,781	213	592	7,771	6,922	13,872	30,732	6,019	660	
13. San Francisco, CA	1984	59,896	60,230	73	495	5,222	3,582	13,217	31,524	5,783	334	
	1985	58,590	58,983	85	512	5,111	3,794	11,757	31,397	5,934	393	
14. Indianapolis, IN	1984	29,103	29,362	49	324	1,842	2,151	8,163	13,552	3,022	259	
	1985	29,651	29,871	59	246	1,795	2,422	8,209	13,927	2,893	220	
15. San Jose, CA	1984	39,818	40,211	48	421	1,175	1,651	9,457	24,296	2,770	393	
	1985	40,224	40,738	55	415	1,237	1,763	9,359	24,331	3,064	514	
16. Memphis, TN	1984	52,792	53,491	113	794	4,763	3,488	14,952	20,755	7,927	699	
	1985	59,965	60,673	122	903	5,016	3,697	15,888	22,596	11,743	708	
17. Washington, DC	1984	53,524	53,858	175	366	6,087	4,097	10,954	27,471	4,374	334	
	1985	50,075	50,369	147	337	5,230	4,457	10,005	24,874	5,025	294	
18. MILWAUKEE, WI	1984	47,846	48,080	44	292	1,871	1,249	8,201	30,618	5,571	234	
	1985	43,944	44,157	68	391	2,086	1,512	7,782	27,151	4,954	213	
19. Jacksonville, FL	1984	42,659	43,027	103	587	2,134	3,404	11,630	22,936	1,865	368	
	1985	48,924	49,339	90	705	2,693	3,813	13,663	25,806	2,154	415	
20. Boston, MA	1984	63,555	63,715	82	460	5,539	4,476	11,446	24,333	17,219	160	
	1985	67,595	67,753	87	532	6,232	5,036	11,470	26,938	17,300	158	



**Prepared by:** Research and Development Bureau

**Compiled and Typed by:** Clerk Peggy A. Koceja, Research and Development Bureau

**Statistics/Narrative Furnished by:** Department Personnel

**Photographs Furnished by:** Identification Division

**Printed by:** Print Section