

MILWAUKEE POLICE DEPARTMENT

ANNUAL REPORT



1951

ANNUAL REPORT

MILWAUKEE POLICE DEPARTMENT



1951

JOHN W. POLCYN

Chief of Police

TABLE OF CONTENTS

Summary of Department Activities	1-2
1951 Highlights	3
Chiefs of Police	4
Personnel and Salary Scale, Members of the Dept., Table I-A	5-6-7
Personnel Distribution of Dept., Table I-B	8
Organization Chart	9
Changes in Authorized and Actual Strength, Table II	10
Changes in Personnel, Table II-A	11
Report of Police Physicians	12
Urinalysis, Table III-A	12
Offenses known to the Police, Table IV	13
Adult arrests and juvenile detentions, Table V	14
Monthly statement of arrests, Table VI	15
Adult arrests, Table VII	16
Nativity	
Age	
Domestic Status	
Color	
Detective Bureau	17
Auto Theft Statistics, Table VIII	17
Bureau of Identification	18
Youth Aid Bureau	19
Police Training School	20
Communications Bureau	21
Traffic Bureau	22
Vice Squad	22
Property Bureau	22
Homicides	23-24
Miscellaneous Services, Table X	25
Distribution of plant equipment, Table XI	26
Deaths as the result of motor vehicle accidents, Table XII-A	27
Analysis of Traffic Accidents:	
Traffic accident analysis, Table XII-B	28
Comparative Totals, Table XII-C	29
Persons killed, Table XII-D	30
Persons injured, Table XII-E	31
By hour of day, Table XII-F	32
By day of week, Table XII-G	33
Light Conditions, Table XII-H	33
Type of Vehicle, Table XII-I	34
Pedestrian Accidents, Table XII-J	35
Summary of all traffic accidents reported, Table XII-K	36
Registration of motor vehicles, Table XII-L	37
Obituary	38

MILWAUKEE POLICE DEPARTMENT

ANNUAL REPORT

-1951-

Most of the crime classifications showed an increase in 1951 over the previous years. There were 117 robbery offenses in 1951, 88 in 1950 and 104 in 1949. There were 6054 larcenies in 1951 as compared with 5555 in 1950. Auto thefts for 1951 were 1052 compared with 934 in 1950. Burglary offenses however showed a decrease for the second consecutive year with 664 for 1951, 673 for 1950, and 749 for 1949. There were nine murders and one manslaughter case in 1951 as compared with eight murders and two manslaughter cases in 1950.

NUMBER OF "ONE-MAN" SQUAD CARS INCREASED

The Department functioned throughout the year with from sixty to one hundred vacancies. This shortage of personnel made it necessary, especially on the day shift, to assign only one officer to many squads which formerly were "two-man" squads. However, in many cases because of the nature of the complaint it was necessary to dispatch two "one-man" squads to handle a call which resulted in many squads being "out of service" at all times. When additional incidents occurred other squads frequently had to be sent long distances requiring considerable time to reach the scene of the emergency.

NARCOTICS

Narcotics is becoming increasingly important as a social problem in the United States and it is constantly requiring increased vigilance on the part of the Department. The distribution of narcotics is on a national and international basis so local authorities are seriously handicapped in suppressing the sale and use of narcotics. There were 169 complaints made to the Department and 122 persons arrested for various narcotic violations in 1951. Most of those persons, 41%, were in the age group of 19 to 25 years; only 16% arrested were under 18 years of age. Heroin was used by 67% of the addicts and marihuana by 20%.

CASH REGISTERS INSTALLED

Cash registers were installed at the District Police Stations and the Traffic Bureau and a new cash procedure system adopted. The new plan saves considerable time and expense in issuing receipts and handling cash.

UNIFORMS AND EQUIPMENT FURNISHED

Uniforms and equipment were provided by the City of Milwaukee to the amount of \$275.00 for all newly appointed patrolmen. Older members of the Department were allowed an average of \$60.00 per year in accordance with requirements of the individual case.

NEW ROWBOAT ADDED

A light weight aluminum rowboat mounted on a trailer was placed into service. This boat can be hauled by one of the patrol wagons to any location when a drowning or other water emergency is reported.

CIVIL DEFENSE ACTIVITIES

The Police Department conducted an extensive training program in the field of Civil Defense. During the year, 2,347 new block wardens were trained in three separate groups.

The Block Warden organization, which in December numbered 3,600, is operative under the supervision of the Police Department through the seven police districts. A Warden Services office is maintained in conjunction with the Police Training School and all wardens' problems, records, and activities are coordinated through this office. Retraining sessions on the district levels are held periodically.

Prepared and conducted a one-day, 8 hour training course for plant protection and building wardens attended by 1,000 representatives from 600 organizations in the City of Milwaukee.

The Department recruited and trained an additional 106 new auxiliary policemen. The total auxiliary police membership now active numbers 415. Each new auxiliary policeman received 12 hours of classroom instruction. All auxiliary police attend monthly in-service training sessions. In addition, Police Sergeants conducted Standard Red Cross First Aid Courses for all auxiliary police on a district level.

Auxiliary police participated in special event activities, such as Civil Defense exercises, the opening of the "Magnificent Mile", Santa Claus Parade, Halloween, General MacArthur Parade, and spent 12 hours per man in actual police patrol, both on foot and in police cruiser cars.

The Department took photographs and processed identification cards for all Civil Defense workers and regular city employees. The Department established a dispersal of equipment program and an alerting and off-duty procedure for police personnel in event of Civil Defense emergencies arising. Designated shelter areas and alert dispersal program for the Safety Building.

In addition to the education of volunteer Civil Defense workers, the Training School, through its Warden Division, conducted a public education program through 68 speeches, conferences, and field meetings attended by 20,287 people. Maintained a film lending service of Civil Defense educational pictures and distributed same to civic, religious, and fraternal groups throughout the city.

Personnel of the Communications Bureau continued active participation in the Milwaukee Civil Defense and Disaster Committee as members of the Communications Division. An amateur radio station was installed at the Control Center, and was operated weekly in drills of the amateur group mobile wing. Enrollment of amateur radio operators as members of the Communications Division continued. The Police Department's old armored wagon was converted to a mobile communications center for use as part of a mobile safety battalion or mutual aid mobile support unit. This unit provides two-way communications with all police, sheriff and fire vehicles served through KSA536 on both medium and VHF bands, as well as communication with Sheriffs' offices in surrounding counties. Call signals assigned to this include KSC379 and KSC380.



THE DEPARTMENT TOOK PHOTOGRAPHS AND PROCESSED IDENTIFICATION CARDS FOR ALL CIVIL DEFENSE WORKERS AND REGULAR CITY EMPLOYEES.



FIVE COMPLETE FINGERPRINT KITS HAVE NOW BEEN ASSIGNED TO THE DETECTIVE BUREAU. MEMBERS OF THE BUREAU HAVE BEEN TRAINED IN THE LATEST TECHNIQUES IN SECURING LATENT FINGERPRINTS AT THE SCENES OF "CRIMES."



CASH REGISTERS WERE INSTALLED IN THE TRAFFIC BUREAU AND DISTRICT POLICE STATIONS AND A NEW CASH PROCEDURE SYSTEM ADOPTED.

1951 HIGHLIGHTS

THE POLICE DEPARTMENT CONDUCTED AN EXTENSIVE TRAINING PROGRAM IN THE FIELD OF CIVIL DEFENSE. THE BLOCK WARDEN ORGANIZATION, WHICH NUMBERED 3,600, IS OPERATIVE UNDER THE SUPERVISION OF THE POLICE DEPARTMENT THROUGH THE SEVEN POLICE DISTRICTS. A WARDEN SERVICES OFFICE IS MAINTAINED IN CONJUNCTION WITH THE POLICE TRAINING SCHOOL AND ALL WARDENS' PROBLEMS, RECORDS, AND ACTIVITIES ARE COORDINATED THROUGH THIS OFFICE. RETRAINING SESSIONS ON THE DISTRICT LEVELS ARE HELD PERIODICALLY.



Milwaukee Journal Photo

MEMBERS OF THE DEPARTMENT WHEN DRAGGING THE RIVER FOR A DROWNED BODY NOW USE A NEW LIGHT WEIGHT ALUMINUM ROWBOAT PURCHASED IN 1951.



Milwaukee Journal Photo

PERIODICALLY SPECIAL INSTRUCTION IS GIVEN IN THE POLICE TRAINING SCHOOL IN THE PROPER HANDLING OF MOTOR VEHICLES AND EQUIPMENT USED BY THE DEPARTMENT AS PART OF A COMPREHENSIVE IN-SERVICE EDUCATIONAL PROGRAM FOR 1,392 MEMBERS OF THE DEPARTMENT. A TOTAL OF 119 NEWLY APPOINTED PATROLMEN AND 7 NEW POLICEMEN COMPLETED THE RECRUIT TRAINING PROGRAM IN 1951. ALL MEMBERS IN ADDITION WERE GIVEN AN ADVANCED FIRST AID COURSE. ALSO SPECIAL CLASSES FOR SUPERVISORY PERSONNEL WERE HELD.

THE CHIEFS OF POLICE OF THE
MILWAUKEE POLICE DEPARTMENT

(Since its formation as a uniformed force in the year 1855)

William Beck* Oct. 4, 1855 to Oct. 14, 1861

Col. W. S. Johnson* Oct. 1861 to April 1862

Herman L. Page* April 1862 to April 1863

William Beck* April 1863 to April 1879

Daniel Kennedy* April 17, 1879 to April 1880

William Beck* April 20, 1880 to April 1882

Robert Wasson*. April 1882 to April 1884

Lemuel Ellsworth* April 26, 1884 to Feb. 16, 1885

Florian Ries* Feb. 18, 1885 to Oct. 9, 1888

John T. Janssen*. Oct. 26, 1888 to May 5, 1921

Jacob Laubenheimer* May 27, 1921 to Aug. 23, 1936

Joseph T. Kluchesky Aug. 29, 1936 to July 31, 1945

John W. Polcyn Aug. 1, 1945

*Deceased.

MILWAUKEE POLICE DEPARTMENT - PERSONNEL AND SALARIES

January 1, 1951**

		<u>Yearly Salary</u>	<u>Monthly Salary</u>	<u>Bi-Weekly Salary</u>
<u>GENERAL OFFICE</u>				
1 - Chief of Police	(1st yr	\$ 9806.40	\$817.20	\$376.14
	(2nd yr	10106.40	842.20	387.64
	(3rd yr	10406.40	867.20	399.15
	(4th yr	10706.40	892.20	410.66
1 - Inspector of Police	(1st yr	7406.40	617.20	284.08
	(2nd yr	7706.40	642.20	295.59
	(3rd yr	8006.40	667.20	307.09
	(4th yr	8306.40	692.20	318.60
	(5th yr	8606.40	717.20	330.11
1 - First Deputy Inspector of Police	(1st yr	6506.40	542.20	249.56
	(2nd yr	6806.40	567.20	261.07
	(3rd yr	7106.40	592.20	272.57
	(4th yr	7406.40	617.20	284.08
2 - Deputy Inspector of Police	(1st yr	5906.40	492.20	226.55
	(2nd yr	6086.40	507.20	233.45
	(3rd yr	6266.40	522.20	240.35
	(4th yr	6386.40	532.20	244.96
	(5th yr	6506.40	542.20	249.56
1 - Police Identification Superintendent	(1st yr	5306.40	442.20	203.53
	(2nd yr	5486.40	457.20	210.44
	(3rd yr	5666.40	472.20	217.34
	(4th yr	5786.40	482.20	221.94
	(5th yr	5906.40	492.20	226.55
3 - Administrative Police Lieutenant	(1st yr	4406.40	367.20	169.01
	(2nd yr	4586.40	382.20	175.92
1 - Secretary, Police Department	(3rd yr	4766.40	397.20	182.82
	(4th yr	4886.40	407.20	187.42
	(5th yr	5006.40	417.20	192.03
1 - Assistant Police Ident. Superintendent	(1st yr	4646.40	387.20	178.22
	(2nd yr	4766.40	397.20	182.82
	(3rd yr	4886.40	407.20	187.42
1 - Custodian Police Property & Stores	(1st yr	4406.40	367.20	169.01
	(2nd yr	4526.40	377.20	173.61
1 - Document Examiner	(3rd yr	4646.40	387.20	178.22
	(1st yr	4166.40	347.20	159.81
2 - Police Identification Supervisor	(2nd yr	4286.40	357.20	164.41
	(3rd yr	4406.40	367.20	169.01
	(1st yr	3806.40	317.20	146.00
2 - Administrative Assistant I	(2nd yr	3986.40	332.20	152.90
	(3rd yr	4166.40	347.20	159.81
	(4th yr	4286.40	357.20	164.41
	(5th yr	4406.40	367.20	169.01
1 - Assistant Custodian of Police Property & Stores	(1st yr	3566.40	297.20	136.79
	(2nd yr	3686.40	307.20	141.40
5 - Identification Technician	(3rd yr	3806.40	317.20	146.00
	(4th yr	3926.40	327.20	150.60
1 - Teller 1	(1st yr	3446.40	287.20	132.19
1 - Clerk IV	(2nd yr	3566.40	297.20	136.79
1 - Law Stenographer III	(3rd yr	3686.40	307.20	141.40
1 - Clerk Stenographer IV	(4th yr	3746.40	312.20	143.70
	(5th yr	3806.40	317.20	146.00

** All salaries increased \$15.00 per month August 1, 1951.

PERSONNEL AND SALARIES

	Yearly Salary	Monthly Salary	Bi-Weekly Salary
--	------------------	-------------------	---------------------

General Office - Continued

1 - Tabulating Equipment Operator	(1st yr	\$3146.40	\$262.20	\$120.68
1 - Duplicating Equipment Operator	(2nd yr	3266.40	272.20	125.29
1 - Clerk III	(3rd yr	3326.40	277.20	127.59
1 - Stores Clerk II	(4th yr	3386.40	282.20	129.89
3 - Clerk Stenographer III	(5th yr	3446.40	287.20	132.19
1 - Key Punch Operator II	(1st yr	2726.40	227.20	104.57
21 - Clerk Stenographer II	(2nd yr	2846.40	237.20	109.18
1 - Clerk II	(3rd yr	2966.40	247.20	113.78
4 - Clerk Typist II	(4th yr	3026.40	252.20	116.08
	(5th yr	3086.40	257.20	118.38
1 - Clerk Stenographer I	(1st yr	2366.40	197.20	90.76
2 - Clerk Typist I	(2nd yr	2486.40	207.20	95.37
	(3rd yr	2546.40	212.20	97.67
	(4th yr	2606.40	217.20	99.97
	(5th yr	2666.40	222.20	102.27
5 - Physician, Police	(1st yr	2017.56	168.13	77.39
(two-thirds time)	(2nd yr	2137.56	178.13	81.99
	(3rd yr	2257.56	188.13	86.59

ALARM SERVICE

1 - Chief Operator of Police Alarm	(1st yr	4646.40	387.20	178.22
	(2nd yr	4766.40	397.20	182.82
	(3rd yr	4886.40	407.20	187.42
2 - Assistant Chief Operator of Police Alarm	(1st yr	4106.40	342.20	157.51
	(2nd yr	4226.40	352.20	162.11
	(3rd yr	4286.40	357.20	164.41
29 - Police Alarm Operator	(1st yr	3926.40	327.20	150.60
	(2nd yr	4046.40	337.20	155.20
	(3rd yr	4106.40	342.20	157.51

RADIO DIVISION

1 - Superintendent of Police Communications	(1st yr	5906.40	492.20	226.55
	(2nd yr	6086.40	507.20	233.45
	(3rd yr	6266.40	522.20	240.35
	(4th yr	6386.40	532.20	244.96
	(5th yr	6506.40	542.20	249.56
1 - Assistant Superintendent of Police Communications	(1st yr	4826.40	402.20	185.12
	(2nd yr	5006.40	417.20	192.03
	(3rd yr	5186.40	432.20	198.93
10 - Radio Mechanic	(1st yr	4166.40	347.20	159.81
	(2nd yr	4286.40	357.20	164.41
	(3rd yr	4406.40	367.20	169.01

POLICE SERVICE

1 - Captain of Detectives	(1st yr	5906.40	492.20	226.55
1 - Captain of Traffic	(2nd yr	6086.40	507.20	233.45
	(3rd yr	6266.40	522.20	240.35
	(4th yr	6386.40	532.20	244.96
	(5th yr	6506.40	542.20	249.56
9 - Captain of Police	(1st yr	5306.40	442.20	203.53
	(2nd yr	5486.40	457.20	210.44
	(3rd yr	5666.40	472.20	217.34
	(4th yr	5786.40	482.20	221.94
	(5th yr	5906.40	492.20	226.55

PERSONNEL AND SALARIES

		<u>Yearly Salary</u>	<u>Monthly Salary</u>	<u>Bi-Weekly Salary</u>
<u>Police Service - Continued</u>				
4 - Lieutenant of Detectives	(1st yr	\$4826.40	\$402.20	\$185.12
	(2nd yr	5006.40	417.20	192.03
	(3rd yr	5186.40	432.20	198.93
12 - Lieutenant of Police	(1st yr	4646.40	387.20	178.22
15 - Detective Sergeant *	(2nd yr	4766.40	397.20	182.82
1 - Detective, Legal & Administrative **	(3rd yr	4886.40	407.20	187.42
1 - Garage Supervisor, Police	(1st yr	4406.40	367.20	169.01
	(2nd yr	4526.40	377.20	173.61
	(3rd yr	4646.40	387.20	178.22
78 - Detective	(1st yr	4166.40	347.20	159.81
90 - Police Sergeant	(2nd yr	4286.40	357.20	164.41
3 - Traffic Accident Investigator	(3rd yr	4406.40	367.20	169.01
3 - Assistant Garage Foreman	(1st yr	3926.40	327.20	150.60
	(2nd yr	4046.40	337.20	155.20
	(3rd yr	4106.40	342.20	157.51
1079 - Police Patrolman ***	(1st yr	3566.40	297.20	136.79
7 - Policewoman	(2nd yr	3686.40	307.20	141.40
	(3rd yr	3806.40	317.20	146.00
	(4th yr	3926.40	327.20	150.60
3 - Garage Attendant	(1st yr	2936.40	244.70	112.63
	(2nd yr	3056.40	254.70	117.23
	(3rd yr	3176.40	264.70	121.83
8 - Jail Matron	(1st yr	2486.40	207.20	95.37
	(2nd yr	2606.40	217.20	99.97
	(3rd yr	2726.40	227.20	104.57
<u>BUILDING AND GROUNDS</u>				
1 - Building Maintenance Supervisor II	(1st yr	4826.40	402.20	185.12
	(2nd yr	5006.40	417.20	192.03
	(3rd yr	5186.40	432.20	198.93
2 - Maintenance Mechanic	(1st yr	3566.40	297.20	136.79
	(2nd yr	3686.40	307.20	141.40
	(3rd yr	3806.40	317.20	146.00
1 - Maintenance Worker	(1st yr	3266.40	272.20	125.29
	(2nd yr	3386.40	282.20	129.89
	(3rd yr	3506.40	292.20	134.49
1 - Window Washer	(1st yr	3236.40	269.70	124.14
	(2nd yr	3296.40	274.70	126.44
	(3rd yr	3356.40	279.70	128.74
30 - Custodial Worker II	(1st yr	2936.40	244.70	112.63
5 - Elevator Operator II	(2nd yr	3056.40	254.70	117.23
	(3rd yr	3176.40	264.70	121.83
2 - Painter (hourly Basis)		4200.00		
91 - Civilian Employees				
1379 - Police Employees				
1470 - TOTAL EMPLOYEES				

* One Detective assigned to Mayor's Office.

** One Legal and Admin. Detective assigned to City Attorney's Office.

*** One Police Patrolman assigned to the City Attorney's Office.

*** Patrolman assigned to Motorcycle Duty receive \$10.00 per month additional.

TABLE I-B

DISTRIBUTION OF PERSONNEL
1951

	Number	No. 1 & Safety Bldg.	No. 2 District	No. 3 District	No. 4 District	No. 5 District	No. 6 District	No. 7 District	Traffic Bureau	Detective Bureau	Bur. of Identification	Bur. of Administration	Personnel & Pub. Rel.	Police Training School	Medical Bureau	Communications Bureau	Vice Squad	Youth Aid Bureau	Mayor's Office	City Attorney's Ofc.
Chief of Police	1										1									
Inspector of Police	1										1									
First Deputy Inspector of Police	1										1									
Deputy Inspector of Police	2										1			1						
Captain of Detectives	1								1											
Captain of Traffic	1								1											
Captain of Police	9	1	1	1	1	1	1	1				2								
Lieutenant of Detectives	4								4											
Lieutenant of Police	12	2	1	1	1	1	1	1	2					2						
Detective Sergeant	15								13								1		1	
Legal & Admin. Detective	1																			1
Detective	78								76								2			
Police Sergeant	90	15	9	10	9	12	10	12	9			1		1			1	1		
Traffic Accident Investigator	3								3											
Garage Supervisor, Police	1	1																		
Asst. Garage Foreman	3	3																		
Police Patrolman	989	233	82	100	79	131	69	101	118	26	8		1	1	1	15	18	5		1
Policewoman	6																3	3		
Garage Attendant	3	3																		
Jail Matron	8	5	3																	
Chief Oper. Police Alarm	1															1				
Asst. Chief Oper. Police Alarm	2															2				
Police Alarm Operator	29															29				
Supt. Police Communications	1															1				
Asst. Supt. Police Communications	1															1				
Radio Mechanic	9															9				
Police Ident. Supt.	1										1									
Secretary, Police Dept.	1											1								
Administrative, Police Lieutenant	3											1	1					1		
Asst. Police Ident. Supt.	1										1									
Administrative Asst. 1	2											2								
Document Examiner	1										1									
Custodian of Police Property	1	1																		
Asst. Custodian of Police Property	1	1																		
Police Ident. Supervisor	2										2									
Identification Technician	3										3									
Clerk-Clerk Steno IV	2									2										
Law Stenographer III	1									1										
Stores Clerk II	1	1																		
Clerk-Clerk Steno III	3	1								2										
Tabulating Equip. Oper.	1											1								
Duplicating Equip. Oper.	1											1								
Teller I	1								1											
Clerk-Clerk Steno II	25								13	5	2	3				1		1		
Key Punch Operator II	1											1								
Clerk Stenographer I	1								1											
Clerk Typist I	1										1									
Physicians, Police (2/3 Time)	5														5					
Bldg. Maint. Suprv II	1	1																		
Maintenance Mechanic	2	2																		
Maintenance Worker	1	1																		
Window Washer	1	1																		
Custodial Worker II	29	23	1	1	1	1	1	1												
Elevator Operator II	4	4																		
Painter	2	2																		
TOTAL	1371	301	97	113	91	146	82	116	148	130	19	17	2	5	6	59	25	11	1	2

MILWAUKEE POLICE DEPARTMENT
ORGANIZATION CHART

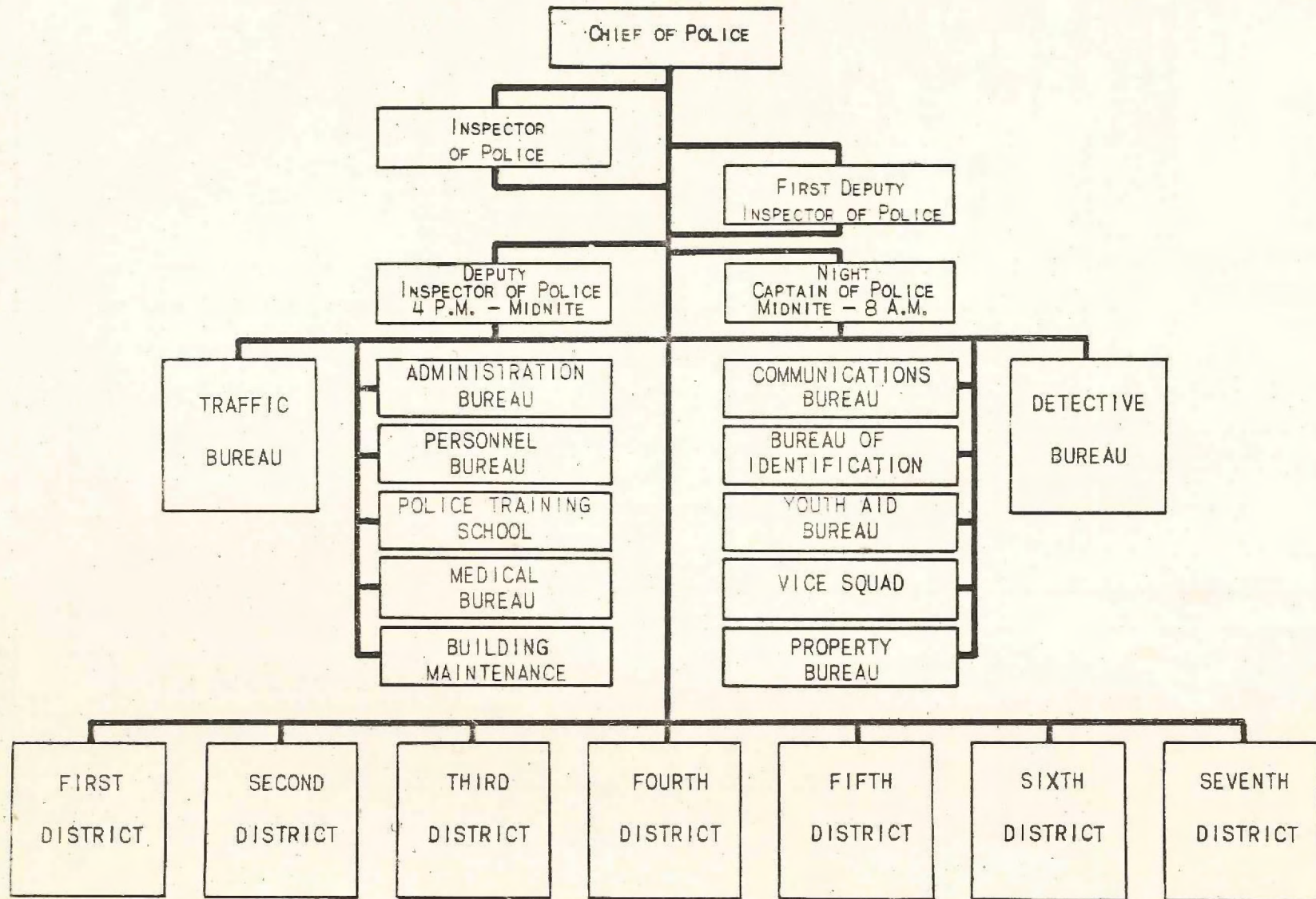


TABLE II

CHANGES IN AUTHORIZED AND ACTUAL STRENGTH OF POLICE DEPARTMENT-1951

	AUTHORIZED STRENGTH	ACTUAL STRENGTH		NET GAIN OR LOSS
	1951	Jan. 1	Dec. 31	
Chief of Police	1	1	1	
Inspector of Police	1	1	1	
First Deputy Inspector of Police	1	0	1	1
Deputy Inspector of Police	2	3	2	-1
Captain of Detectives	1	1	1	
Captain of Traffic	1	1	1	
Captain of Police	9	9	9	
Lieutenant of Detectives	4	4	4	
Lieutenant of Police	12	11	12	1
Detective Sergeant	15	12	15	3
Legal and Administrative Detective	1	1	1	
Detective	78	76	78	2
Police Sergeant	90	85	90	5
Traffic Accident Investigator	3	1	3	2
Garage Supervisor, Police	1	1	1	
Assistant Garage Foreman	3	3	3	
Police Patrolman	1079	1024	989	-35
Policewoman	7	5	6	1
Garage Attendant	3	3	3	
Jail Matron	8	10	8	-2
Chief Operator of Police Alarm	1	1	1	
Assistant Chief Operator of Police Alarm	2	2	2	
Police Alarm Operator	29	29	29	
Superintendent of Police Communications	1	1	1	
Assistant Superintendent of Police Communications	1	1	1	
Radio Mechanic	10	10	9	-1
Police Identification Superintendent	1	1	1	
Secretary, Police Department	1	1	1	
Administrative Police Lieutenant	3	3	3	
Assistant Police Identification Superintendent	1	0	1	1
Administrative Assistant I	2	2	2	
Document Examiner	1	1	1	
Custodian of Police Property	1	1	1	
Assistant Custodian of Police Property	1	1	1	
Police Identification Supervisor	2	1	2	1
Identification Technician	5	5	3	-2
Clerk-Clerk Stenographer IV	2	2	2	
Law Stenographer III	1	1	1	
Stores Clerk II	1	1	1	
Clerk-Clerk Stenographer III	4	4	3	-1
Tabulating Equipment Operator	1	1	1	
Duplicating Equipment Operator	1	1	1	
Teller I	1	1	1	
Clerk-Clerk Stenographer II	26	23	25	2
Key Punch Operator II	1	1	1	
Clerk Steno I- Clerk Typist I	3	3	2	-1
Physicians, Police (Two-Thirds Time)	5	5	5	
Building Maintenance Supervisor II	1	1	1	
Maintenance Mechanic	2	2	2	
Maintenance Worker	1	1	1	
Window Washer	1	1	1	
Custodial Worker II	30	30	29	-1
Elevator Operator	5	5	4	-1
Painter	2	2	2	
TOTAL	1470	1397	1371	-26

TABLE II-ACHANGES IN POLICE PERSONNEL DURING 1951

1. Present for duty, January 1, 1951	1397
2. Recruited during the year	134
3. Reinstated during the year.	3
4. Returned from armed services.	<u>4</u>
TOTAL	1538
5. Separations from service	
(a) Voluntary resignations	43
(b) Retirement on pension	
1. Annuity	57
2. Disability	20
(c) Resigned with charges pending	1
(d) Dropped during probation	3
(e) Killed in line of duty	1
(f) Dismissed for cause	14
(g) Deceased	9
(h) Enlisted and inducted into the Armed Forces	<u>19</u>
TOTAL.	167
6. Present for duty, December 31, 1951	1371

TABLE III
REPORT OF THE POLICE PHYSICIANS

	<u>1950</u>	<u>1951</u>
1. Number of cases of sickness and injury of members and employees of the Department	1924	2365
2. Number of days lost by members and employees as the result of sickness and injury	14010	17167
3. Number of calls made on members and employees who reported sick or injured	2117	2397
4. Number of special medical examinations	140	240
5. Special examinations -- applicants for patrolmen.	89	271
6. Examinations of probationary patrolmen	136	49
7. Examinations of patrolmen (Reinstatement from Military Service)	1	6
8. Examinations of applicants for policewoman.	16	0
9. Military Leave examinations	19	21

TABLE III-A

URINALYSIS

EXAMINATIONS OF PERSONS ARRESTED FOR OPERATING

MOTOR VEHICLE WHILE UNDER THE INFLUENCE OF INTOXICATING LIQUOR

<u>MONTH</u>	<u>1950</u>	<u>1951</u>
January	57	45
February.	58	45
March	56	86
April	65	76
May	60	62
June.	60	81
July.	78	76
August.	74	58
September	84	78
October	55	77
November.	65	70
December.	82	95
TOTAL.	794	849

Note: All urinalysis specimens voluntarily submitted by persons arrested for this charge.

TABLE IV
OFFENSES KNOWN TO THE POLICE

<u>Offenses</u>	<u>1951</u>												1951	1950	1949
	Jan.	Feb.	Mar.	Apr.	May	June	July	Aug.	Sept.	Oct.	Nov.	Dec.	TOT.	TOT.	TOT.
Criminal Homicide															
a. Murder & Non-negligent manslaughter	-	-	2	-	1	2	-	2	2	2	2	1	14	10	10
b. Mansl. by negl.	1	-	2	-	2	4	-	-	2	4	3	3	21	26	10
Rape	5	3	3	6	1	1	1	1	-	1	2	2	26	36	37
Robbery	16	16	6	13	6	8	11	6	8	8	9	10	117	82	104
Aggravated Assault	14	17	17	10	18	25	7	17	14	27	13	15	194	149	121
Burglary	69	47	56	66	34	70	55	55	53	63	42	54	664	673	746
Larceny															
a. \$50 and over	72	90	122	121	131	135	136	122	144	182	120	116	1491	1122	1025
b. Under \$50	235	209	336	350	475	480	478	451	443	489	322	295	4563	4433	3896
Auto Theft	83	125	83	114	100	80	72	90	78	79	86	62	1052	934	638
TOTAL	495	507	627	680	768	805	760	744	744	855	599	558	8142	7465	6587

ADULT ARRESTS AND JUVENILE DETENTIONS1951

	<u>Persons over</u> <u>18 years of age</u>	<u>Persons under</u> <u>18 years of age</u>
1. Criminal homicide:		
(a) Murder and non-negligent manslaughter	10	0
(b) Manslaughter by negligence	11	0
2. Rape	149	37
3. Robbery	136	27
4. Aggravated assault	77	13
5. Burglary -- breaking or entering	179	230
6. Larceny -- theft (except auto theft)	470	531
7. Auto theft	81	356
8. Other Assaults	776	27
9. Forgery and counterfeiting	152	8
10. Embezzlement and fraud	430	9
11. Stolen property; buying, receiving, possessing	12	6
12. Weapons; carrying, possessing, etc.	210	26
13. Prostitution and commercialized vice	82	0
14. Sex offenses (except 2 and 13)	368	185
15. Offenses against the family and children	347	5
16. Narcotic drug laws	129	9
17. Liquor laws	47	1
18. Drunkenness	16901	83
19. Disorderly conduct	2932	327
20. Vagrancy	2313	9
21. Gambling laws	473	1
22. Driving while intoxicated	1042	4
23. Violation of road and driving laws	24431	696
24. Parking violations	130881	1
25. Traffic and motor vehicle laws (except 22-24)	4099	286
26. All other offenses	<u>1729</u>	<u>1145</u>
TOTAL	188467	4022
Suspicion arrests	<u>705</u>	<u>0</u>
GRAND TOTAL	189172	4022

TABLE VI
MONTHLY STATEMENT OF ARRESTS

1951

	<u>STATE CASES</u>	<u>CITY CASES</u>	<u>MISC. CASES</u>	<u>TOTAL</u>
January	953	15279	36	16268
February	852	12206	28	13086
March	1050	16364	35	17449
April	1019	14724	28	15771
May	1041	14147	36	15224
June	1045	14361	41	15447
July	1110	14461	33	15604
August	1144	14249	42	15435
September	1096	14397	39	15532
October	1305	16972	34	18311
November	1035	14048	51	15134
December	1157	14020	29	15206
TOTAL	12807	175228	432	188467

TABLE VII
NATIVITY OF ADULTS ARRESTED

1951

United States	53795
Germany	382
Austria, Hungary	205
Poland	215
Russia	121
Norway	87
Italy	55
Slavania, Croatia, Bohemia	170
Canada	65
Mexico	115
Ireland	42
Greece	25
Sweden	34
Belgium	19
All other	1252
TOTAL	56582**

AGE OF ADULTS ARRESTED

	MALE	FEMALE
Between 18 and 19 years	3891	200
Between 20 and 29 years	17796	1374
Between 30 and 39 years	11800	1000
Between 40 and 49 years	9600	877
Between 50 and 59 years	5999	412
Between 60 and 69 years	2763	103
Between 70 and 79 years	518	15
Between 80 and 89 years	24	2
Not given	185	23
TOTAL	52576**	4006**

DOMESTIC STATUS

Married	26262
Single	21018
Widow-(er)	1741
Divorced	4385
Separated	1960
Not given	1216
TOTAL	56582**

COLOR

White	47775
Black	8050
Yellow	76
Copper	662
Not Given	19
TOTAL	56582**

**130417 Parkers and 1468 Pedestrians not included in the above totals.

DETECTIVE BUREAU

The Detective Bureau investigated 14,288 complaints of a criminal nature; 7,604 letters and communications were investigated; 9227 persons were interviewed and 353 verbatim statements were taken during 1951. There were 58 cases of suicide and 115 attempted suicides investigated by members of the Bureau. A total of 2,042 persons were reported missing during the year and 1,927 were located.

A total of 3,219 arrests were made by members of the Detective Bureau. There were 491 fugitives arrested by members of this Department and turned over to other jurisdictions and 247 arrested by other departments and returned here.

TABLE VIIIAUTO THEFT STATISTICS

	<u>1950</u>	<u>1951</u>
Thefts	395	504
Recoveries	368	468
Missing.	27	36
Joyrides	538	548
Total Thefts	933	1052
Total Recoveries	906	1016
Outside Cars Recovered	54	80
Total Value of cars reported stolen	\$1,032,351	\$1,135,285
Total Value of cars recovered		
(a) Local	\$865,845	\$914,579
(b) Outside	\$240,680	\$232,437
Percentage of recoveries	97.1%	96.6%

BUREAU OF IDENTIFICATION

The total number of prisoners registered in the Bureau of Identification during 1951 was 8044 compared to 6429 in 1950 and 6159 in 1949. Of the total number of prisoners 59% had previous fingerprint records here or elsewhere. Of the total number of prisoners, 2,160 or 27% were transients.

A summary of the work performed by the Bureau is as follows:

Number of fingerprints added to criminal file.....	9,973
Number of fingerprints mailed to other jurisdictions.....	10,261
New prisoners photographed.....	2,530
Copies of new prints.....	5,060
Photostatic copies of miscellaneous matter.....	8,959

During 1951, the Photographic Division produced 30,900 photographic prints as compared with 26,293 for the previous year.

There were 1,415 new applicants for bartender licenses, 3832 renewals for bartender licenses, 1606 new applicants for taxicab driver licenses and 1212 renewals for cab driver licenses.

In 141 cases investigations were made at the scenes of crime for the purpose of developing latent fingerprint evidence, and in 130 additional cases objects were brought to the Bureau to be examined for fingerprint evidence. A total of 27 identifications were made during the year through fingerprints developed in these cases.

During the year 1951, the Bureau of Identification was called upon to assist members of the Detective Bureau in solving 12 difficult cases involving "inside" thefts reported in offices, stores, locker-rooms, hospitals, etc., in which the sneak thief continued to operate successfully despite the employment of the usual methods to effect his apprehension.

Frequently during the past year the Bureau was called upon to obtain tiny identifying jewelers' scratch marks on rings, wrist watches, and other objects and in every instance the numbers were read by the use of the binocular microscope. Ultra-violet light machines were used on many occasions to read faint and illegible writings and to detect changes made in documents, identification cards, etc.

The document file was reorganized. The general classification based on the Lee and Abbey system was retained. But in addition, there is now a special check trademark section and additional folders designating "method of operation". A higher rate of identification is expected from the new special section.

A new technique has been developed by the Department in the photographing of prisoners and the filing of such photographs. All photographs now have a full length "stand-up" view in addition to the regular front and profile view. All three poses are produced on one regular film and one photo measuring 3" x 4½" is made.

JUVENILE DELINQUENCY PREVENTION PROGRAMAND THE YOUTH AID BUREAU

The Youth Aid Bureau continued to serve as a clearing house for the Department for the referral of all youths where officers find that their behavior or activities were such that they are likely to become law violators. Through the activities of this Bureau the early detection of these mal-adjustments and other anti-social behavior makes it possible for the early rehabilitation of the youth before permanent harm has occurred.

In Milwaukee since the establishment of the Youth Aid Bureau and the new system adopted in 1946 wherein each member of the Police Department was trained to understand the juvenile problem, a substantial decrease has been shown in juvenile delinquents. In 1945, the year prior to the establishment of the new juvenile policy, there were 6,302 juvenile detentions by this Department; for the year 1951 there were 4,089.

As a result of this program each officer is instructed to assume an intelligent, understanding, and sympathetic attitude and to treat the pre-delinquent child in this manner. Therefore, all members of the Department are virtually juvenile crime prevention agents.

The Youth Aid Bureau serves as a nucleus and a clearing house for all referrals made to the Bureau of those juveniles that the individual police officer has difficulty in rehabilitating. Members assigned to duty in the Bureau made 7261 personal contacts regarding referred juveniles. These contacts included interviews with the child, parents, school and the probation department.

A total of 1,937 investigations were made on complaints received from schools, churches, civic and fraternal groups, theatres, sweet shops, citizens, etc. Vandalism, disorderly conduct, destruction of property, minors loitering or drinking in taverns, and minor larcenies were the chief cause of complaint. The more serious charges involved sex offenses, runaways, contributing to the delinquency of a minor by an adult and premiscuous neglect of children on the part of parents or guardians.

Members assigned to the Bureau also made 3,625 regular inspections and visits to youth centers, social centers, clubs, taverns, soda fountains, sweet shops, restaurants, roller skating rinks, meeting halls, theatres, after-school assemblies, athletic events, etc. These inspections are routine daily activities for the members of the Bureau and are not a part of the investigations made on complaint from such sources.

Officers from the Bureau were assigned to give a total of 74 talks pertaining to juvenile delinquency and various juvenile problems before church groups, clubs, civic and fraternal organizations during the year. Members of the Bureau also conducted 107 groups on educational tours through the Safety Building.

One of the Police Department's best weapons in combating juvenile delinquency is the splendid working relationship that has been established between the police and the youth of the city.

POLICE TRAINING SCHOOL

The Milwaukee Police Department, through its Training School, conducts a comprehensive in-service educational program for 1,392 police employees. During the year 1951, the Training School conducted 161 classes of instruction in the following subjects:

Message on "The State of the Department" by Chief John W. Polcyn
 "Milwaukee's Narcotic Problems" by Det. Sgt. Harry Kuszewski, Vice Squad
 "Preparation and Presentation of Cases in Court" by Mr. Harold McGrath,
 Ass't District Attorney, District Attorney's Office
 Introduction to Civilian Defense
 Civil Defense Operations
 Courtesy, Deportment, and Current Police Problems
 New Laws in the State Traffic Code
 Narcotics and Dangerous Drug Identification
 Narcotic Laws -- Federal, State, and City Ordinances
 Police Driver Responsibility
 New and Amended State Laws
 Military Drill -- Parade Duty

Under the supervision of the Police Training School, all members of the Department were given a course of Advanced First Aid instruction, on the district level, by the 28 trained instructor sergeants.

The Training School conducted a "specialized" training course on supervisory duties for 33 newly appointed superior officers. Also, two refresher sessions on "Leadership" for all supervisors.

Each man attending classes, qualified indoors with his service revolver scoring at least 80 percent out of a possible 100 percent in order to qualify. Detectives and squad men qualified at the Lake Park Gun Club in riot gun practice.

A total of 119 newly appointed patrolmen completed the recruit training course during 1951. A new training course for policewomen was established in 1951, and the 7 new policewomen participated in an 80 hour training program.

There were 14 sessions of the Juvenile Bicycle Violator's School conducted with 636 violators and 289 visitors in attendance.

In the field of Public Relations, 81 speeches by personnel of the school were given to various civic, fraternal and church organizations, and the attendance at these appearances numbered in excess of 21,307 persons.

The Training School administers the Police Blood Donors Club, and during the year processed requests for 106 pints of blood and arranged for 162 donations.

The Training School cooperated with the Federal Bureau of Investigation and Wisconsin Chiefs of Police Association on January 8th and 9th, 1951, with the Administrative School attended by 141 police officials from throughout the State.

A class of 31 women School Crossing Guards were trained during the week of January 15th thru 21st, 1951. In addition, the entire School Crossing Guard force attended two retraining sessions during the year.

The Training Division was given the assignment of administering the new city owned uniform and equipment plan established for the Department. A new record system was developed, and 2,600 individual orders were issued and processed during the year. The Training School staff cooperated in the seasonal uniform inspections in the various districts and bureaus.

Members of the School Staff attended the FBI National Academy, University of Wisconsin, Summer Session on Alcohol Studies, and Northwestern University Law School on Court Procedures.

COMMUNICATIONS BUREAU

The number of mobile units served increased to 118, with 264 vehicles equipped for two-way and 154 equipped for one-way radio communications. West Milwaukee installed its own police radio system, adding another independent radio system in Milwaukee County to those installed by West Allis, South Milwaukee, and Cudahy during the past four years. Our station KSA536 continues to serve the County and all other suburban police and fire departments with free coordinated radio service which does much to increase the cooperation and effectiveness of the public protective agencies throughout the metropolitan area.

The change-over to the 152-174 mc band continued with the addition of 59 more VHF transmitter-receiver units for vehicles. All wagons and ambulances, Detective Bureau, Traffic Bureau and General Service cars, and Traffic Bureau servi-cars were changed over to VHF two-way operation. A start was made on changing over the uniformed patrol squads by equipping 12 cars in this group. Three additional handy-talky units were purchased.

An additional quarter kilowatt base station was installed at the Civil Defense Control Center as an emergency alternate for the regular VHF base station at the Third District Police Station and is controlled from the police radio-dispatchers' office in the event of failure of the regular station, but may also be controlled locally at the Control Center in case of trouble at the Dispatchers' Office.

Ship-to-shore public telephone facilities were installed on the Fire Tug Deluge. One car and three trucks of the Fire and Police Alarm System were equipped for one-way radio service, and one truck of the Bureau of Municipal Equipment was equipped for two-way service through the Police radio system.

The Police Communications planned and installed two-way radio equipment in six water department trucks, a transmitter at N. 57th Street and W. McKinley Boulevard, and the control board at N. 16th and W. Canal Street.

	TO MILWAUKEE POLICE CARS		OUTGOING CALLS	INCOMING MOBILE CALLS
	ORDERS	RUNS		
January	6684	9292	19,249	34,255
February	6454	8402	17,778	30,863
March	7012	9052	19,105	34,290
April	7753	9264	20,246	33,810
May	8108	10,161	21,951	34,929
June	7743	10,289	21,817	33,984
July	7627	10,881	22,538	35,036
August	7345	11,068	22,212	34,268
September	7692	11,283	22,590	34,171
October	8464	11,047	23,001	35,624
November	7497	10,115	20,788	32,689
December	8297	12,486	24,424	35,010
1951 TOTAL	90,676	123,340	255,699	408,929

The total orders sent to Fire Department vehicles in 1951 amounted to 6462 and a total of 14,298 incoming calls were received from these vehicles.

The radio service furnished to the sheriff and other police departments in the county is also increased in 1951. There were 35,221 orders sent out and 56,013 incoming mobile calls were received.

There were 7117 intercity messages transmitted and 10,330 such messages received by the Radio Bureau.

TRAFFIC BUREAU

The general office of the Traffic Bureau is now open from 7:00 A.M. to midnight for receiving fines and bail, recording traffic summons issued for moving vehicle violations, the handling of traffic accident reports and for other traffic functions. An additional lieutenant of police was assigned to the Traffic Bureau and is in charge from 4:00 P.M. to midnight. During this time, also in the office, an additional desk sergeant is on duty and two clerks to assist in booking traffic offenses and to perform other clerical duties.

There were 160,453 arrests for traffic violations during 1951 as compared to 142,387 for 1950. A total of 22,008 warning cards were issued to motorists for minor violations of the traffic code and bad driving practices as compared to 19,049 for 1950. During the year, 6,789 bicyclists received warning cards for violations of the Bicycle Ordinance or Traffic Code as compared to 5,383 for 1950; the total attendance at the Bicycle Violator's School was 636 for 1951 as compared to 554 for 1950.

There were 25,361 traffic accidents in 1951 compared to 23,289 for 1950, an increase of 9%. (For complete traffic accident statistics see pages 27 to 36 Tables XII-A to XII-K.)

VICE SQUAD

There were 829 complaints received and investigated by the Vice Squad during 1951 compared to 593 during 1950; 2,008 arrests were made by members of the squad during the current year.

	<u>1950</u>	<u>1951</u>
Disorderly houses and prostitution.....	59	58
Gambling.....	65	62
Liquor violations.....	24	15
Fortune telling.....	4	3
Narcotic complaints.....	105	169
Other complaints.....	336	522

Known gambling establishments, houses of prostitution and premises suspected of engaging in these activities were constantly under the surveillance by members of the Vice Squad for the purpose of securing evidence to procure search warrants and prosecution in court.

PROPERTY BUREAU

The following is an activity report of the Property Bureau for the year 1951:

Total number of inventories received from District Stations.....	11,829
Property turned over to owners by Property Bureau (Inventories)....	8,124
Total amount of money inventoried.....	\$47,199
Lost or stray animals - sent to Wis. Humane Society.....	836
Lost or stray animals - returned to owners.....	21
Requisitions filled for Departmental Supplies.....	2,556

HOMICIDES - 1951

Arvin Bounds, col., 26, of 1933 N. 7th Street, on Sunday, March 4, 1951, at 10:00 P.M. while on the street at 1244 N. 6th Street, was stabbed twice. He died shortly after his arrival at County Emergency Hospital. Cleared: Alfred Hill, col., 23, of 2233 A N. 11th Street, was arrested and sentenced to 14-25 years, Wisconsin State Prison, on a murder charge.

George Haymer, col., 42, of 1935 N. 5th Street, on Sunday, May 6, 1951, about 1:45 A.M. was stabbed with an ice pick in the chest by his wife during an argument over another woman. Conveyed to County Emergency Hospital. Dead on entrance. Cleared: Marie Haymer, col., 44, who admitted the stabbing, was arrested on a charge of murder - 2nd degree, dismissed by Court October 1, 1951.

Floyd Berree, col., 34, of Camp #17, Milwaukee Road, on August 21, 1951, in the early morning hours, was struck on the head with an iron pipe outside the bunkhouse where he was living. Assailant had quarreled with the victim earlier in the evening. Cleared: Willie Moore, col., 23, arrested and charged with Murder-1st degree. Sentenced to Life Imprisonment at Wisconsin State Prison.

Leonard Lee, col., 19, 1807 N. 7th Street, on Saturday, September 22, 1951, at about 11:30 P.M., was fatally stabbed with a paring knife during an argument which took place in front of 512 W. Vliet Street. Cleared: James Bufford, col., 20, arrested and charged with Murder-2nd degree. Sentenced 14-25 years, Wisconsin State Prison.

William White, col., 43, 2126 N. 7th Street, on Sunday, September 23, 1951, at 8:05 P.M., was shot by his wife during an argument. Conveyed to County Emergency Hospital where he died several hours later. Cleared: Gussie White, col., 43, arrested and charged with Murder-1st degree. Bound over to Municipal Court.

Walter Merten, age 35, on Sunday evening, October 28, 1951, at 8:30 P.M., while at 3233 N. Humboldt Avenue, was shot after an argument by a Mrs. Minnette Turnbough, a divorcee, with whom he had been keeping steady company. Cleared: Minnette Turnbough shot herself and upon recovering was charged with Murder-1st degree. Case bound over to Municipal Court.

Peter Venturas, 60, tavern proprietor at 1731 N. 3rd Street, fatally shot at 2:40 A.M. on Sunday, November 18, 1951, while resisting a holdup in his tavern. Cleared: Governor Medlock and Marvene Hawthorne arrested and charged with Murder-1st degree. Cases bound over to Municipal Court.

Mrs. Alice Beckley, col., 27, of 1611 N. 8th Street, on Thursday, November 22, 1951, at 3:00 P.M., during an argument attacked her husband with a pair of shears. Her husband then picked up a shot gun and fired at her. Victim died shortly after arriving at County Emergency Hospital. Cleared: The husband, James Beckley, arrested and charged with Murder-1st degree. Case bound over to Municipal Court.

Mrs. Edna Ahrens, 45, of 839 A W. Winnebago Street, between 2:00 A.M. and 9:15 A.M., on Saturday, December 22, 1951, was assaulted with a fist or blunt instrument near the gangway leading to her home. She received numerous lacerations and abrasions and was pronounced dead on arrival at County Emergency Hospital. Cleared: George Dowell, col., 31, of 835 A W. Winnebago Street, arrested and charged with Murder-1st degree. Case bound over to Municipal Court.

MANSLAUGHTER

Herman Griffin, col., 21, 1912 N. 7th Street, on Sunday, March 25, 1951, at 12:45 A.M., was cut in a fight at 1218 W. North Avenue. He was conveyed to County Emergency Hospital where he died. Cleared: Charles Motley, col., 21, was arrested and charged with Manslaughter-2nd degree. Case bound over to Municipal Court.

JUSTIFIABLE AND EXCUSABLE HOMICIDE

Charles Alden, col., 24, of 2910 N. 11th Street, on Sunday, June 10, 1951, at 4:00 A.M. on the school ground of Roosevelt Jr. High School, was involved in an argument and a fight ensued causing him to strike his head on the macadam pavement and knocking him unconscious. He died at 4:45 A.M. at County Emergency Hospital. Cleared: Allan Williams, col., 28, arrested as person responsible; investigation revealed that Alden was the aggressor. Case classified as excusable homicide.

Rufus Arrington, col., 33, Railroad Camp No. 31, was struck on the head about 2:00 A.M., August 16, 1951, during a brawl over a dice game. On August 17th he was examined at the First Aid Room of the railroad and was sent to the Milwaukee Hospital for X-rays but the doctors could find nothing wrong. On August 20, 1951, when he complained again of not feeling well was taken to County Emergency Hospital and later Veterans Administration at Wood, Wis., where he died of a brain hemorrhage on August 27, 1951. Cleared: The participants were questioned but as all were drunk and so many men were involved no person or persons could be held responsible and because of the circumstances it was classified as excusable homicide.

Joseph Szuch, 49, of 1737 N. 2nd Street, on September 17, 1951, while drunk, had followed a woman, was brandishing a knife and threatening her. Patrolman Paul Estrada was advised by a passerby as to what was happening went to her rescue and attempted to dissuade him. Whereupon he made a lunge at the officer and attempted to stab him. The officer retreated and admonished him to drop the knife and advising him he was under arrest. The officer fired two warning shots and when he still came for him in defense, shot at him twice. The Medical Examiner classified the case as justifiable homicide.

Henry Young, 41, of 1503 N. Marshall Street, at 4:58 A.M., Monday, October 1, 1951, parked his car on N. 7th and W. Walnut Streets where it was struck by a Transport Company bus. Young got out of his car and started arguing with the driver and assaulted the bus driver. The driver returned the blow and Young was knocked to the pavement striking his head. He was conveyed to the County Emergency Hospital where he was pronounced dead on entrance. Cleared: Paul Mosser, 42, was exonerated at the Medical Examiner's Inquest. Excusable homicide.

TABLE X
MISCELLANEOUS SERVICES

1 9 5 1

	First	Second	Third	Fourth	Fifth	Sixth	Seventh	Traffic	Total
Accidents investigated	5151	1314	3735	1761	4034	2281	3390	3039	24705
Ambulance calls	4474	1613	843	1748	2437	539	1650		13304
Complaints investigated	20636	6351	9984	6227	11996	9138	4514		68846
Defective sidewalk & sts. restd.	655	655	2778	942	2236	463	461		8190
Destitute persons cared for	0	0	0	0	3	0	0		3
Doors reported open	459	490	464	204	573	211	633		3034
Drowned bodies recovered	9	1	0	3	1	0	0		14
First Aid rendered	5461	1183	759	1751	830	660	880		11524
Insane persons taken into custody	37	3	0	0	0	0	0		40
Letters & Comm. investigated	44857	19200	21052	15949	21191	18988	20173	17865	179275
License applications investigated	3226	895	1220	856	1915	850	1526		10488
Liquor Law -- Investigations	1925	1579	2304	1381	854	589	1522		10154
Lodgers accommodated	50	168	12	47	33	20	25		355
Lost children restored to parents	267	26	25	66	118	56	244		802
Official letters delivered	6878	1451	1516	1305	2857	254	2345		16606
Official notices served	126	178	178	2155	0	273	334		3244
Patrol wagon calls	14041	2564	2269	1314	2793	1379	1529		25889
Persons rescued from drowning	1	0	0	0	0	0	0		1
Persons reported missing	497	180	251	154	248	125	190		1645
Sick and injured conveyed	7084	2436	855	1755	2468	660	1615		16873

TABLE XI

DISTRIBUTION OF PLANT EQUIPMENT

	First	Second	Third	Fourth	Fifth	Sixth	Seventh	Traffic	Garage	TOTAL
Original cost of Bldg. (not including land)	\$1,595,969	\$32,872	\$135,000	\$23,387	\$22,320	\$85,248	\$84,980	--	--	\$1,979,776
Year Built	1930	1892	1937	1904	1904	1927	1928	--	--	--
Pop. of Dist. (est.)	109,865	43,864	97,787	60,963	118,775	75,915	130,223	--	--	*637,392
Area in Square Miles	4.92	2.89	7.38	6.02	7.45	7.96	14.05	--	--	50.67
Number of Ambulances	1	1	--	1	1	--	1	--	--	5
Comb. Amb.-Patrol Wagons	2	1	1	1	1	1	1	--	4	12
Number of Automobiles (all two-way radio equip.)	8	4	6	5	8	6	10	9	48	104
Number of Motorcycles (all radio equipped)	--	--	--	--	--	--	--	53	--	53
Number of Servi-Cars (all radio equipped)	--	--	--	--	--	--	--	19	--	19
Number of Police Signal Boxes	223	91	194	145	225	132	213	--	--	1223
Boxes with lights	192	68	106	42	54	39	68	--	--	569
Police Motor Boats	--	--	--	--	1	--	--	--	--	1
Number of Burg. Alarm Stations	20	--	3	1	1	2	1	--	--	28
Other Mech. Equip. (Trucks)	1	--	2	--	1	--	--	--	--	4

*1950 Federal Census

TABLE XII-ADEATHS AS THE RESULT OF MOTOR VEHICLE ACCIDENTS

The following tabulation includes all deaths resulting from motor vehicle accidents in public places within the city limits of Milwaukee.*

<u>Year</u>	<u>Total Fatalities</u>
1930	90
1931	86
1932	86
1933	72
1934	66
1935	66
1936	70
1937	65
1938	41
1939	56
1940	68
1941	61
1942	48
1943	49
1944	31
1945	53
1946	43
1947	51
1948	43
1949	48
1950	43
1951	50

*Report does NOT include:

- (a) Deaths resulting from accidents which occurred off the street, or private (home or industrial) premises.
- (b) Deaths from traffic accidents not involving motor vehicle, such as street car striking pedestrian, train striking pedestrian, horse-drawn vehicle.

TABLE XII-B

ANALYSIS OF TRAFFIC ACCIDENTS - 1951

<u>Type of Accident</u>	<u>All Accidents</u>	<u>Fatal</u>	<u>Non- Fatal</u>	<u>Property Damage</u>	<u>Total Killed</u>	<u>Total Injured</u>
Collision of Motor Vehicle with:						
1. Pedestrian	1351	38	1313	-	38	1388
2. Other motor vehicle	12155	8	1747	10400	8	2415
3. Railroad train	24	-	8	16	-	9
4. Street car	270	-	50	220	-	71
5. Animal-drawn vehicle	2	-	-	2	-	-
6. Bicycle	157	-	147	10	-	151
7. Animal	-	-	-	-	-	-
8. Fixed object	729	3	248	478	4	305
9. Other object	-	-	-	-	-	-
10. Overturned in roadway	-	-	-	-	-	-
11. Ran off roadway	-	-	-	-	-	-
12. Other non-collision	-	-	-	-	-	-
13. MOTOR VEHICLE TRAFFIC TOTAL	14688	49	3513	11126	50	4339
14. R.R.not with Motor Veh.	1	1	-	-	1	-
15. Street car--not with Mot.Veh.	26	-	26	-	-	24
16. Other not with Motor Veh.	34	-	34	-	-	36
TOTAL TRAFFIC	14749	50	3573	11126	51	4399

TABLE XII-C
ANALYSIS OF TRAFFIC ACCIDENTS
COMPARATIVE TOTALS*

<u>Type of Accident</u>	<u>1 9 5 1</u>			<u>1 9 5 0</u>		
	<u>All Accidents</u>	<u>Persons Killed</u>	<u>Persons Injured</u>	<u>All Accidents</u>	<u>Persons Killed</u>	<u>Persons Injured</u>
Collision of Motor Vehicle with:						
1. Pedestrian	1351	38	1388	1489	34	1542
2. Other motor vehicle	12155	8	2415	9586	3	2334
3. Railroad train	24	-	9	43	2	24
4. Street car	270	-	71	249	2	65
5. Animal-drawn vehicle	2	-	-	11	-	3
6. Bicycle	157	-	151	151	2	141
7. Animal	-	-	-	-	-	-
8. Fixed object	729	4	305	832	-	410
9. Other object	-	-	-	-	-	-
10. Overturned in Roadway	-	-	-	-	-	-
11. Ran off roadway	-	-	-	-	-	-
12. Other non-collision	-	-	-	-	-	-
MOTOR VEHICLE TRAFFIC TOTAL	14688	50	4339	12361	43	4519

*Tables include motor vehicle traffic accidents only.

TABLE XII-D
ANALYSIS OF TRAFFIC ACCIDENTS*

BY AGE GROUP AND RACE

PERSONS KILLED

	<u>ALL PERSONS</u>			<u>PEDESTRIANS</u>			<u>BICYCLISTS</u>		
	<u>Total</u>	<u>Male</u>	<u>Female</u>	<u>Total</u>	<u>Male</u>	<u>Female</u>	<u>Total</u>	<u>Male</u>	<u>Female</u>
1. 0-4 years	4	2	2	4	2	2	-	-	-
2. 5-9 years	1	-	1	1	-	1	-	-	-
3. 10-14 years	-	-	-	-	-	-	-	-	-
4. 15-19 years	2	2	-	-	-	-	-	-	-
5. 20-24 years	-	-	-	-	-	-	-	-	-
6. 25-34 years	5	5	-	3	3	-	-	-	-
7. 35-44 years	5	5	-	2	2	-	-	-	-
8. 45-54 years	6	4	2	6	4	2	-	-	-
9. 55-64 years	9	7	2	6	5	1	-	-	-
10. 65-74 years	8	6	2	8	6	2	-	-	-
11. 75 and over	9	8	1	8	7	1	-	-	-
12. Not stated	1	1	-	-	-	-	-	-	-
TOTAL PERSONS	50	40	10	38	29	9	-	-	-
13. White	47	37	10	37	28	9	-	-	-
14. Negro	3	3	-	1	1	-	-	-	-
15. Other	-	-	-	-	-	-	-	-	-
16. Not stated	-	-	-	-	-	-	-	-	-
TOTAL PERSONS	50	40	10	38	29	9	-	-	-

*Tables include motor vehicle traffic accidents only.

TABLE XII-E
ANALYSIS OF TRAFFIC ACCIDENTS*
BY AGE GROUP AND RACE

	<u>PERSONS INJURED</u>								
	<u>ALL PERSONS</u>			<u>PEDESTRIANS</u>			<u>BICYCLISTS</u>		
	<u>Total</u>	<u>Male</u>	<u>Female</u>	<u>Total</u>	<u>Male</u>	<u>Female</u>	<u>Total</u>	<u>Male</u>	<u>Female</u>
1. 0-4 years	292	173	119	145	95	50	-	-	-
2. 5-9 years	413	259	154	296	191	105	21	19	2
3. 10-14 years	262	202	60	92	62	30	96	87	9
4. 15-19 years	378	222	156	54	19	35	22	21	1
5. 20-24 years	507	302	205	52	34	18	2	2	-
6. 25-34 years	721	401	320	94	56	38	3	3	-
7. 35-44 years	503	280	223	109	69	40	-	-	-
8. 45-54 years	418	237	181	135	88	47	1	1	-
9. 55-64 years	342	199	143	157	105	52	-	-	-
10. 65-74 years	165	95	70	105	68	37	-	-	-
11. 75 and over	62	46	16	48	38	10	-	-	-
12. Not stated	276	196	80	101	69	32	6	5	1
TOTAL PERSONS	4339	2612	1727	1388	894	494	151	138	13
13. White	4085	2424	1661	1299	827	472	148	135	13
14. Negro	252	187	65	87	66	21	3	3	-
15. Other	2	1	1	2	1	1	-	-	-
16. Not stated	-	-	-	-	-	-	-	-	-
TOTAL PERSONS	4339	2612	1727	1388	894	494	151	138	13

*Tables include motor vehicle traffic accidents only.

TABLE XII-F
ANALYSIS OF TRAFFIC ACCIDENTS*

<u>HOUR OF DAY</u>		<u>All</u> <u>Accidents</u>	<u>Fatal</u> <u>Accidents</u>
1.	Midnight to 12:59 A.M.	555	5
2.	1:00 A.M. to 1:59 A.M.	444	1
3.	2:00 A.M. to 2:59 A.M.	426	4
4.	3:00 A.M. to 3:59 A.M.	253	1
5.	4:00 A.M. to 4:59 A.M.	144	-
6.	5:00 A.M. to 5:59 A.M.	99	1
7.	6:00 A.M. to 6:59 A.M.	335	1
8.	7:00 A.M. to 7:59 A.M.	594	-
9.	8:00 A.M. to 8:59 A.M.	460	1
10.	9:00 A.M. to 9:59 A.M.	423	1
11.	10:00 A.M. to 10:59 A.M.	520	2
12.	11:00 A.M. to 11:59 A.M.	667	2
13.	Noon to 12:59 P.M.	713	3
14.	1:00 P.M. to 1:59 P.M.	734	1
15.	2:00 P.M. to 2:59 P.M.	823	-
16.	3:00 P.M. to 3:59 P.M.	1152	-
17.	4:00 P.M. to 4:59 P.M.	1411	3
18.	5:00 P.M. to 5:59 P.M.	1268	2
19.	6:00 P.M. to 6:59 P.M.	727	2
20.	7:00 P.M. to 7:59 P.M.	782	6
21.	8:00 P.M. to 8:59 P.M.	612	8
22.	9:00 P.M. to 9:59 P.M.	483	2
23.	10:00 P.M. to 10:59 P.M.	484	2
24.	11:00 P.M. to 11:59 P.M.	529	1
25.	Not stated	50	-
TOTAL ACCIDENTS		14688	49

*Tables include motor vehicle traffic accidents only.

TABLE XII-G
ANALYSIS OF TRAFFIC ACCIDENTS*

<u>BY DAY OF WEEK</u>		<u>All Accidents</u>	<u>Fatal Accidents</u>
1. Monday		2059	9
2. Tuesday		1877	4
3. Wednesday		1666	4
4. Thursday		1850	6
5. Friday		2398	5
6. Saturday		2749	10
7. Sunday		<u>2089</u>	<u>11</u>
TOTAL ACCIDENTS		14688	49

TABLE XII-H
ANALYSIS OF TRAFFIC ACCIDENTS*

<u>BY LIGHT CONDITION</u>		<u>All Accidents</u>	<u>Fatal Accidents</u>
1. Daylight		8473	14
2. Dusk or dawn		448	3
3. Darkness--street lights		5494	30
4. Darkness--no street lights		118	2
5. Darkness--lighting not stated		-	-
6. Not stated		<u>155</u>	<u>-</u>
TOTAL ACCIDENTS.		14688	49

*Tables include motor vehicle traffic accidents only.

TABLE XII-ITYPE OF VEHICLE

	<u>All Accidents</u>	<u>Fatal Accidents</u>
1. Passenger car	24724	46
2. Same--and trailer or house trailer	-	-
3. Truck	2300	5
4. Truck and trailer	-	-
5. Truck tractor and semi-trailer.	256	2
6. Other truck combination	9	-
7. Taxicab	289	-
8. Bus	420	2
9. Motorcycle.	123	3
10. Other vehicle	2	-
11. Not stated.	<u>-</u>	<u>-</u>
TOTAL ACCIDENTS	28123	58
12. Emergency vehicles included in above	117	1

TABLE XII-J
ANALYSIS OF TRAFFIC ACCIDENTS

Pedestrian Actions	Total Pedes- trians	Pedes- trians Killed	Killed and Injured -- Age									Sex	
													Not Stated
			0-4	5-9	10-14	15-19	20-24	25-44	45-64	65 & Over			
												Male	Female
1a. Crossing at intersection -- with signal	231	6	6	15	13	9	8	45	65	53	17	127	104
b. Same - against signal	97	7	3	10	14	9	1	14	20	16	10	64	33
c. Same - no signal	216	2	8	34	12	9	17	35	56	36	9	124	92
d. Same - diagonally	24	2	1	8	1	-	-	5	5	4	-	20	4
2. Crossing not at intersection	345	7	59	126	21	5	7	33	56	18	20	221	124
3. Coming from behind parked cars	-	-	-	-	-	-	-	-	-	-	-	-	-
4. Walking in roadway	21	-	-	1	3	1	1	6	5	4	-	16	5
5. Standing in safety zone	6	-	-	-	-	-	-	1	4	1	-	4	2
6. Getting on or off street car	26	-	1	1	-	3	1	3	8	8	1	20	6
7. Getting on or off other vehicle	5	-	-	-	1	-	-	2	1	-	1	2	3
8. Working in roadway	12	-	-	-	-	-	1	7	4	-	-	11	1
9. Playing in roadway	32	-	10	19	3	-	-	-	-	-	-	25	7
10. Hitching on vehicle	7	-	2	2	-	-	-	2	1	-	-	7	-
11. Not in roadway	11	-	5	2	1	-	-	-	1	1	1	9	2
12. Not stated	393	14	54	84	21	18	18	54	63	40	41	275	118
TOTAL PEDESTRIANS	1426	38	149	302	90	54	54	207	289	181	100	925	501

TABLE XII-KSUMMARY OF ALL TRAFFIC ACCIDENTS REPORTED TO THE POLICEDEPARTMENT FOR TEN YEARS BY MONTH, ENDING DEC. 31, 1951

<u>MONTH</u>	<u>1941</u>	<u>1944</u>	<u>1945</u>	<u>1946</u>	<u>1947</u>	<u>1948</u>	<u>1949</u>	<u>1950</u>	<u>1951</u>
January	1717	941	888	1344	1555	1782	1930	1647	2869
February	1425	855	744	1363	1325	1607	1735	1829	2161
March	1347	682	686	1130	1283	1377	1390	1947	2147
April	1221	584	627	990	1150	1231	1439	1728	1779
May	1570	628	678	1096	1357	1403	1485	1688	1806
June	1491	624	685	1090	1267	1346	1437	1785	1775
July	1599	557	672	1003	1128	1359	1502	1771	1684
August	1634	616	795	1032	1192	1334	1481	1909	1763
September	1739	556	949	1100	1433	1339	1537	1730	1824
October	1721	672	908	1220	1308	1320	1664	1738	1967
November	1732	697	1081	1424	1520	1439	1672	2062	2277
December	2016	1154	1700	1597	1666	1892	2375	3455	3309
TOTAL	19212	8566	10413	14389	16184	17429	19647	23289	25361

TABLE XII-LREGISTRATION OF MOTOR VEHICLES1932 up to and including 1951

	<u>Number of Motor Vehicles Licensed in the County of Milwaukee</u>	<u>Number of Motor Vehicles Licensed in the City of Milwaukee</u>
1932	142,159	113,821
1933	138,924	112,446
1934	151,316	122,295
1935	159,583	130,196
1936	179,432	147,322
1937	186,770	153,765
1938	181,587	147,106
1939	187,706	152,119
1940	197,528	161,671
1941	215,624	174,096
1942	180,254	148,543
1943	181,459	145,000*
1944	172,813	140,000*
1945	177,969	145,000*
1946	184,811	148,000*
1947	208,394	160,000*
1948	221,916	170,629
1949	246,717	190,090
1950	264,606	203,067
1951	276,533	211,304

*Estimated

OBITUARYPeter Borkowitz

Appointed Patrolman February 16, 1928
 Died. February 13, 1951

John Rydlewicz

Appointed Patrolman May 6, 1916
 Promoted to Detective March 7, 1931
 Died. March 14, 1951

Joseph Kress

Appointed Senior Clerk Stenographer January 10, 1938
 Promoted to Identification Technician January 1, 1946
 Died. April 15, 1951

Dr. Arthur Cohn

Appointed Chief Surgeon November 8, 1927
 Died. July 20, 1951

August Bay

Appointed Janitor June 4, 1940
 Died. July 17, 1951

Walter Wachs

Appointed Patrolman June 1, 1938
 Died. July 8, 1951

John Janicki

Appointed Patrolman February 23, 1924
 Died. November 10, 1951

John Helz

Appointed Patrolman July 1, 1919
 Appointed to Detective. October 9, 1926
 Died. October 30, 1951

Vernon White

Appointed Patrolman August 11, 1941
 Died. November 10, 1951

On November 10, 1951 at 10:00 A.M. Patrolman Vernon White while escorting a Civilian Defense Mobile Unit during a practice air raid struck a moving vehicle, which entered the intersection disregarding the sirens, causing him to loose control of the motorcycle. He died a few minutes later.

Dr. Joseph Eisenberg

Appointed Police Physician. September 21, 1951
 Died. November 10, 1951