

MILWAUKEE POLICE DEPARTMENT

**ANNUAL REPORT**



**1950**



# ANNUAL REPORT

MILWAUKEE POLICE DEPARTMENT



# 1950

JOHN W. POLCYN  
CHIEF OF POLICE

# TABLE OF CONTENTS

Summary of Department Activities	1-2
1950 Highlights	3
Chiefs of Police	4
Personnel and Salary Scale, Members of the Dept., Table I-A	5-6-7
Personnel Distribution of Dept., Table I-B	8
Organization Chart	9
Changes in Authorized and Actual Strength, Table II	10
Changes in Personnel, Table II-A	11
Report of Police Physicians	12
Urinalysis, Table III-A	12
Offenses known to the Police, Table IV	13
Adult arrests and juvenile detentions, Table V	14
Monthly statement of arrests, Table VI	15
Adult arrests, Table VII	16
Nativity	
Age	
Domestic Status	
Color	
Detective Bureau	17
Auto Theft Statistics, Table VIII	17
Bureau of Identification	18
Youth Aid Bureau	19
Police Training School	20
Communications Bureau	21
Traffic Bureau	22
Vice Squad	22
Property Bureau	22
Homicides	23-24
Miscellaneous Services, Table X	25
Distribution of plant equipment, Table XI	26
Deaths as the result of motor vehicle accidents, Table XII-A	27
Analysis of Traffic Accidents:	
Traffic accident analysis, Table XII-B	28
Comparative Totals, Table XII-C	29
Persons killed, Table XII-D	30
Persons injured, Table XII-E	31
By hour of day, Table XII-F	32
By day of week, Table XII-G	33
Light Conditions, Table XII-H	33
Type of Vehicle, Table XII-I	34
Pedestrian Accidents, Table XII-J	35
Summary of all traffic accidents reported, Table XII-K	36
Registration of motor vehicles, Table XII-L	37
Obituary	38



## MILWAUKEE POLICE DEPARTMENT

### ANNUAL REPORT

-1950-

No definite trend is evident in analyzing 1950 crime statistics. Some major crime classifications showed a decrease. There were 104 robbery offenses in 1949 and 82 in 1950, a decrease of 21%. Burglary offenses decreased from 746 in 1949 to 673 in 1950 or 10%.

Larceny on the other hand increased from 4921 in 1949 to 5555 cases in 1950 or 10%. Auto thefts showed the largest increase with 934 cars reported stolen in 1950 and 638 in 1949 and 765 in 1948.

Murder and non-negligent manslaughter was the same for 1950 and 1949 with 10 cases each year.

#### 44 HOUR WORK WEEK

In 1950 the 44 hour work week became effective in the police service. To partially offset the effective personnel available for duty daily 75 school crossing guards were appointed on a part-time basis and one man squad cars were substituted for two man squad cars, especially on the day shift.

#### CHANGE IN ASSIGNMENT OF MOTORCYCLE PATROLMEN

The late motorcycle patrolmen formerly working from 12:00 midnight to 8:00 A.M. were changed to a shift from 6:00 P.M. to 2:00 A.M. This provides additional coverage during the early evening hours when traffic is very congested, especially on Thursday and Friday nights.

#### PATROL SERGEANTS ASSIGNED TO CARS

To provide better coverage by patrol sergeants one sergeant in each district is now assigned to a car. They are constantly in contact with the radio dispatchers and can be promptly dispatched to any location where needed in an emergency and in addition can better supervise the men in their district.

#### BUREAU OF IDENTIFICATION AND CLERICAL DIVISION OPEN 24 HOURS DAILY

The Clerical Division of the Detective Bureau and the Bureau of Identification were placed on a 24 hour basis in 1950. This greatly facilitates the handling of persons arrested during the night as well as criminal records and complaints. Suspicious persons can be checked immediately and complete records prepared for the court session the following morning. As most of the criminal divisions of the large metropolitan cities operate 24 hours a day, there is no delay now in handling such inquiries received from other jurisdictions.



## NIGHT PARKING PERMITS

In May, 1950, the Common Council in an effort to control the all night parking situation passed an ordinance permitting motorists to park their vehicles on certain streets (except arterial highways and fire lanes) in congested areas upon the payment of a fee of \$4.00 per month. Such permits are issued by the Police Department after it has been ascertained that there are no garages or parking spaces in the immediate vicinity.

During the first seven months of 1950 that this plan was in operation a total of \$151,676 was collected by the Police Department and turned over to the City Treasurer.

## CIVIL DEFENSE ACTIVITIES

In June of 1950, the Honorable Mayor Frank P. Zeidler, Director of Civil Defense assigned to the Milwaukee Police Department the task of organizing the Warden Services Division of Civil Defense. The Police Training School was assigned the task of setting up the training program and organizing this group. The entire Department aided in recruiting.

On September 25, 1950, the training of the first group of 1500 wardens began and another 800 wardens started training on November 22, 1950. Each warden was photographed, thumb printed, supplied with an identification card, mimeographed training material, and the warden's kit.

In order to facilitate the administration of such a vast organization, the Police Department utilized the organizational breakdown within the Department so that we have seven warden districts within the boundaries of the seven Police Districts. The Police Captain in charge of the district is designated as the Warden Supervisor. Each Captain has selected a staff of civilians from the civic-minded leaders of his district to assist him in assigning, guiding, and supervising the wardens of their respective district.

Since the reactivation of the Auxiliary Police Organization in April of 1949, continuous training for the 350 members of this organization in the following subjects were given them:

- Rules and Regulations
- Natural Gas and First Steps in First Aid
- Civil Defense Problems
- State Laws Covering Emergencies
- Problems of Disasters.

In addition, the Auxiliary Police were indoctrinated in "on-the-job" training by working with regular police in squad cars, foot patrol, etc.

The members of this organization are assigned to the Police District nearest their home. All members of this group carry identification cards with their photograph, thumb print, and physical description recorded thereon. They have been equipped with police caps, auxiliary police cap shields, and when on duty are issued a special auxiliary police badge.

The long range planning in setting up our Auxiliary Police Organization includes the expansion of this unit to handling the problems of traffic control, the staffing of temporary morgues, the staffing of mobile rescue battalions and a general force to assist the regular police in prevention of panic, pillaging, looting, and other problems incident to disaster.



## 1950 HIGHLIGHTS

The activities of the Traffic Bureau have greatly increased during the past ten years. In 1940 there were 17,029 traffic accidents and 43,549 arrests for the various traffic violations. In 1950 there were 23,289 traffic accidents and 142,385 traffic arrests.



New regulations require pedestrians to cross business streets at the intersection and in accordance with the traffic control functioning.



To facilitate the handling of the public in the Police Traffic Bureau, the upper glass partitions of the counter were removed.



All persons arrested by the Milwaukee Police Department in cases involving sex offenses are examined in the Police Medical Bureau by a nurse assigned by the State Board of Health as part of the Venereal Disease Control Program.

This is again becoming increasingly important with so many service men spending their week-end furloughs in Milwaukee.



The Bureau of Identification is now open twenty-four hours a day for fingerprinting persons who have been arrested and for checking arrest records.



THE CHIEFS OF POLICE OF THE  
MILWAUKEE POLICE DEPARTMENT

(Since its formation as a uniformed force in the year 1855)

William Beck*	Oct. 4, 1855 to Oct. 14, 1861
Col. W. S. Johnson*	Oct. 1861 to April 1862
Herman L. Page*	April 1862 to April 1863
William Beck*	April 1863 to April 1879
Daniel Kennedy*	April 17, 1879 to April 1880
William Beck*	April 20, 1880 to April 1882
Robert Wasson*	April 1882 to April 1884
Lemuel Ellsworth*	April 26, 1884 to Feb. 16, 1885
Florian Ries*	Feb. 18, 1885 to Oct. 9, 1888
John T. Janssen*	Oct. 26, 1888 to May 5, 1921
Jacob Laubenheimer*	May 27, 1921 to Aug. 23, 1936
Joseph T. Kluchesky	Aug. 29, 1936 to July 31, 1945
John W. Polcyn	Aug. 1, 1945

\*Deceased.



## MILWAUKEE POLICE DEPARTMENT - PERSONNEL AND SALARIES

January 1, 1950

		<u>Yearly</u> <u>Basic</u> <u>Salary</u>	<u>Monthly</u> <u>Basic</u> <u>Salary</u>	<u>Monthly</u> <u>Bonus &amp;</u> <u>Adjustment</u>	<u>Total</u> <u>Monthly</u> <u>Salary</u>
<u>GENERAL OFFICE</u>					
1 Chief of Police	(1st yr	\$7200.	\$600.00	\$100.32	\$700.32
	(2nd yr	7500.	625.00	"	725.32
	(3rd yr	7800.	650.00	"	750.32
	(4th yr	8100.	675.00	"	775.32
1 Inspector of Police	(1st yr	4800.	400.00	"	500.32
	(2nd yr	5100.	425.00	"	525.32
	(3rd yr	5400.	450.00	"	550.32
	(4th yr	5700.	475.00	"	575.32
3 Deputy Inspector of Police	(1st yr	4200.	350.00	"	450.32
	(2nd yr	4380.	365.00	"	465.32
	(3rd yr	4560.	380.00	"	480.32
	(4th yr	4680.	390.00	"	490.32
	(5th yr	4800.	400.00	"	500.32
1 Police Identification Supt.	(1st yr	3600.	300.00	"	400.32
	(2nd yr	3780.	315.00	"	415.32
	(3rd yr	3960.	330.00	"	430.32
	(4th yr	4080.	340.00	"	440.32
	(5th yr	4200.	350.00	"	450.32
1 Secretary, Police Department	(1st yr	3000.	250.00	"	350.32
3 Administrative Police Lieut.	(2nd yr	3180.	265.00	"	365.32
	(3rd yr	3360.	280.00	"	380.32
	(4th yr	3480.	290.00	"	390.32
	(5th yr	3600.	300.00	"	400.32
1 Police Identification Supervisor	(1st yr	2760.	230.00	"	330.32
	(2nd yr	2880.	240.00	"	340.32
	(3rd yr	3000.	250.00	"	350.32
1 Custodian Police Property & Stores	(1st yr	3000.	250.00	"	350.32
	(2nd yr	3120.	260.00	"	360.32
	(3rd yr	3240.	270.00	"	370.32
2 Administrative Assistant I	(1st yr	2400.	200.00	"	300.32
	(2nd yr	2580.	215.00	"	315.32
	(3rd yr	2760.	230.00	"	330.32
	(4th yr	2880.	240.00	"	340.32
	(5th yr	3000.	250.00	"	350.32
1 Handwriting Technician	(1st yr	2520.	210.00	"	310.32
	(2nd yr	2640.	220.00	"	320.32
	(3rd yr	2700.	225.00	"	325.32
5 Identification Technician	(1st yr	2160.	180.00	"	280.32
1 Assistant Custodian Police Property & Stores	(2nd yr	2280.	190.00	"	290.32
	(3rd yr	2400.	200.00	"	300.32
	(4th yr	2520.	210.00	"	310.32
1 Clerk IV	(1st yr	2040.	170.00	"	270.32
1 Law Stenographer III	(2nd yr	2160.	180.00	"	280.32
1 Clerk Stenographer IV	(3rd yr	2280.	190.00	"	290.32
1 Teller I	(4th yr	2340.	195.00	"	295.32
	(5th yr	2400.	200.00	"	300.32



## PERSONNEL AND SALARIES

		Yearly Basic Salary	Monthly Basic Salary	Monthly Bonus & Adjustment	Total Monthly Salary
<u>General Office - Continued</u>					
1 Clerk III	(1st yr	\$1740.	\$145.00	\$100.32	\$245.32
3 Clerk Stenographer III	(2nd yr	1860.	155.00	"	255.32
1 Duplicating Equipment Operator	(3rd yr	1920.	160.00	"	260.32
1 Stores Clerk II	(4th yr	1980.	165.00	"	265.32
1 Tabulating Equipment Operator	(5th yr	2040.	170.00	"	270.32
1 Clerk II	(1st yr	1320.	110.00	"	210.32
20 Clerk Stenographer II	(2nd yr	1440.	120.00	"	220.32
2 Clerk Typist II	(3rd yr	1560.	130.00	"	230.32
1 Key Punch Operator II	(4th yr	1620.	135.00	"	235.32
	(5th yr	1680.	140.00	"	240.32
1 Clerk Stenographer I	(1st yr	960.	80.00	"	180.32
2 Clerk Typist I	(2nd yr	1080.	90.00	"	190.32
	(3rd yr	1140.	95.00	"	195.32
	(4th yr	1200.	100.00	"	200.32
	(5th yr	1260.	105.00	"	205.32
5 Physician, Police	(1st yr	1080.	90.00	66.87	156.87
(two-thirds time)	(2nd yr	1200.	100.00	"	166.87
	(3rd yr	1320.	110.00	"	176.87
<u>ALARM SERVICE</u>					
1 Chief Operator of Police Alarm	(1st yr	3240.	270.00	100.32	370.32
	(2nd yr	3360.	280.00	"	380.32
	(3rd yr	3480.	290.00	"	390.32
2 Assistant Chief Operator of Police Alarm	(1st yr	2700.	225.00	"	325.32
	(2nd yr	2820.	235.00	"	335.32
	(3rd yr	2880.	240.00	"	340.32
29 Police Alarm Operator	(1st yr	2520.	210.00	"	310.32
	(2nd yr	2640.	220.00	"	320.32
	(3rd yr	2700.	225.00	"	325.32
<u>RADIO DIVISION</u>					
1 Superintendent of Police Communications	(1st yr	4200.	350.00	"	450.32
	(2nd yr	4380.	365.00	"	465.32
	(3rd yr	4560.	380.00	"	480.32
	(4th yr	4680.	390.00	"	490.32
	(5th yr	4800.	400.00	"	500.32
1 Assistant Superintendent of Police Communications	(1st yr	3420.	285.00	"	385.32
	(2nd yr	3600.	300.00	"	400.32
	(3rd yr	3780.	315.00	"	415.32
10 Radio Mechanic	(1st yr	2760.	230.00	"	330.32
	(2nd yr	2880.	240.00	"	340.32
	(3rd yr	3000.	250.00	"	350.32
<u>POLICE SERVICE</u>					
1 Captain of Detectives	(1st yr	4200.	350.00	"	450.32
	(2nd yr	4380.	365.00	"	465.32
	(3rd yr	4560.	380.00	"	480.32
	(4th yr	4680.	390.00	"	490.32
	(5th yr	4800.	400.00	"	500.32



## PERSONNEL AND SALARIES

		Yearly Basic Salary	Monthly Basic Salary	Monthly Bonus & Adjustment	Total Monthly Salary
<u>Police Service - Continued</u>					
1 Captain of Traffic	(1st yr	\$3600.	\$300.00	\$100.32	\$400.32
9 Captain of Police	(2nd yr	3780.	315.00	"	415.32
	(3rd yr	3960.	330.00	"	430.32
	(4th yr	4080.	340.00	"	440.32
	(5th yr	4200.	350.00	"	450.32
4 Lieutenant of Detectives	(1st yr	3420.	285.00	"	385.32
	(2nd yr	3600.	300.00	"	400.32
	(3rd yr	3780.	315.00	"	415.32
11 Lieutenant of Police	(1st yr	3240.	270.00	"	370.32
12 Detective Sergeant	(2nd yr	3360.	280.00	"	380.32
1 Detective, Legal and Administrative*	(3rd yr	3480.	290.00	"	390.32
1 Garage Supervisor, Police	(1st yr	3000.	250.00	"	350.32
	(2nd yr	3120.	260.00	"	360.32
	(3rd yr	3240.	270.00	"	370.32
76 Detective*	(1st yr	2760.	230.00	"	330.32
85 Police Service	(2nd yr	2880.	240.00	"	340.32
1 Traffic Accident Investigator	(3rd yr	3000.	250.00	"	350.32
3 Assistant Garage Supervisor, Police	(1st yr	2520.	210.00	"	310.32
	(2nd yr	2640.	220.00	"	320.32
	(3rd yr	2700.	225.00	"	325.32
1051 Police Patrolman*	(1st yr	2160.	180.00	"	280.32
5 Policewoman	(2nd yr	2280.	190.00	"	290.32
	(3rd yr	2400.	200.00	"	300.32
	(4th yr	2520.	210.00	"	310.32
3 Garage Attendant	(1st yr	1530.	127.50	"	227.82
	(2nd yr	1650.	137.50	"	237.82
	(3rd yr	1770.	147.50	"	247.82
10 Jail Matron	(1st yr	1080.	90.00	"	190.32
	(2nd yr	1200.	100.00	"	200.32
	(3rd yr	1320.	110.00	"	210.32
<u>BUILDINGS AND GROUNDS</u>					
1 Building Maintenance Supervisor	(1st yr	3000.	250.00	"	350.32
	(2nd yr	3120.	260.00	"	360.32
	(3rd yr	3240.	270.00	"	370.32
2 Maintenance Mechanic	(1st yr	2160.	180.00	"	280.32
	(2nd yr	2280.	190.00	"	290.32
	(3rd yr	2400.	200.00	"	300.32
1 Maintenance Worker	(1st yr	1860.	155.00	"	255.32
	(2nd yr	1980.	165.00	"	265.32
	(3rd yr	2100.	175.00	"	275.32
1 Window Washer	(1st yr	1830.	152.00	"	252.82
	(2nd yr	1890.	157.50	"	257.82
	(3rd yr	1950.	162.50	"	262.82
30 Custodial Worker II	(1st yr	1530.	127.50	"	227.82
5 Elevator Operator II	(2nd yr	1650.	137.50	"	237.82
	(3rd yr	1770.	147.50	"	247.82
2 Painter (Hourly Basis)		3900.			
88 Civilian Employees	*1 Detective assigned to Mayor's Office				
1336 Police Employees	*1 Patrolman assigned to City Attorney's Office				
1424 TOTAL EMPLOYEES	*1 Legal & Admin. Detective assigned to City Attorney's Off.				
	*Patrolman assigned to Motorcycle Duty receive \$10.00 per month additional.				



TABLE I-B

DISTRIBUTION OF PERSONNEL  
1950

	Number	No. 1 & Safety Bldg.	No. 2 District	No. 3 District	No. 4 District	No. 5 District	No. 6 District	No. 7 District	Traffic Bureau	Detective Bureau	Bur. of Identification	Bur. of Administration	Personnel & Pub. Rel.	Police Training School	Medical Bureau	Communications Bureau	Vice Squad	Youth Aid Bureau	Mayor's Office	City Attorney's Ofc.
Chief of Police	1											1								
Inspector of Police	1											1								
Dep. Insp. of Police	3											2		1						
Captain of Detectives	1									1										
Captain of Traffic	1								1											
Captain of Police	9	1	1	1	1	1	1	1				2								
Lieutenant of Detectives	4									4										
Lieutenant of Police	11	2	1	1	1	1	1	1	1					2						
Detective Sergeant	12									12										
Legal & Admin. Detective	1																			1
Detective	76									73							2		1	
Police Sergeant	85	12	9	10	9	12	10	10	9			1		1			1	1		
Traf. Accident Investigator	1								1											
Garage Supervisor, Police	1	1																		
Asst. Garage Suprv., Police	3	3																		
Police Patrolman	1024	228	81	97	85	143	78	108	123	29	8		1	1	1	18	17	5		1
Policewoman	5																3	2		
Garage Attendant	3	3																		
Jail Matron	10	6	2	2																
Chief Oper. Pol. Alarm	1																1			
Asst. Chief Oper. Pol. Alarm	2																2			
Police Alarm Operator	29																29			
Supt. Police Communications	1																1			
Asst. Supt. Police Comm.	1																1			
Radio Mechanic	10																10			
Police Ident. Supt.	1										1									
Secretary, Police Dept.	1											1								
Administrative Lieutenant	3											1	1					1		
Administrative Asst. I	2											2								
Handwriting Technician	1										1									
Custodian Police Property	1	1																		
Asst. Custodian Pol. Propty.	1	1																		
Police Ident. Suprv.	1											1								
Identification Technician	5										5									
Clerk Stenographer IV	1									1										
Clerk IV	1									1										
Law Stenographer III	1									1										
Stores Clerk II	1	1																		
Clerk Stenographer III	3									3										
Tabulating Equip. Oper.	1											1								
Duplicating Equip. Operator	1											1								
Teller I	1								1											
Clerk Stenographer II	20								7	5	2	3		1		1		1		
Clerk Typist II	2								2											
Clerk II	1								1											
Clerk III	1	1																		
Key Punch Operator II	1											1								
Clerk Stenographer I	1								1											
Clerk Typist I	2										2									
Physician, Police (2/3 time)	5														5					
Bldg. Maint. Suprv. I	1	1																		
Maintenance Mechanic	2	2																		
Maintenance Worker	1	1																		
Window Washer	1	1																		
Custodial Worker II	30	24	1	1	1	1	1	1												
Elevator Operator II	5	5																		
Painter	2	2																		
Total	1397	296	95	112	97	158	91	121	147	130	20	17	2	6	6	63	23	10	1	2



MILWAUKEE POLICE DEPARTMENT  
ORGANIZATION CHART

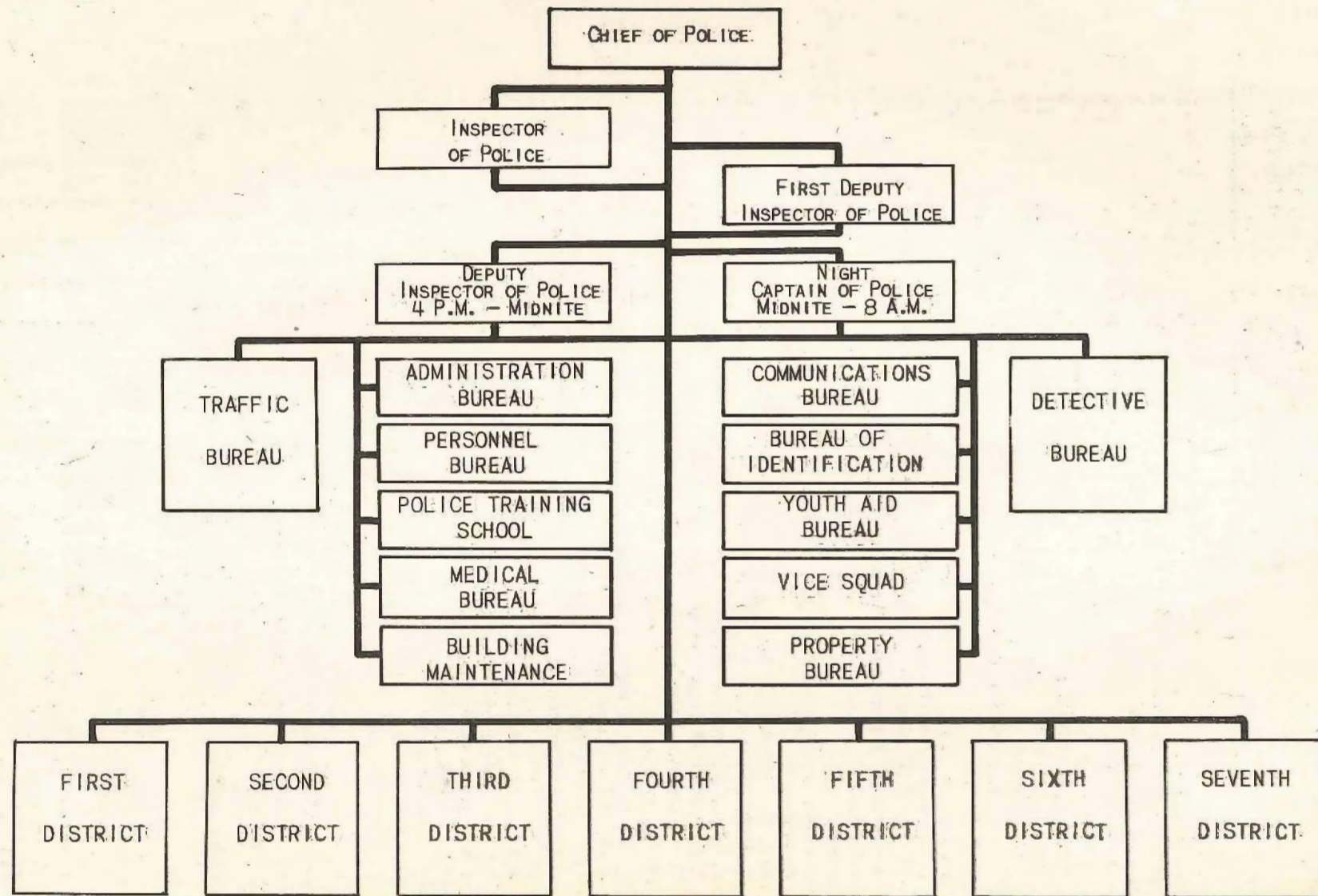




TABLE II  
CHANGES IN AUTHORIZED AND ACTUAL STRENGTH OF POLICE DEPARTMENT - 1950

	AUTHORIZED STRENGTH 1950	ACTUAL STRENGTH		NET GAIN OR LOSS
		Jan. 1	Dec. 31	
Chief of Police	1	1	1	
Inspector of Police	1	1	1	
Deputy Inspector of Police	3	2	3	1
Captain of Detectives	1	1	1	
Captain of Traffic	1	1	1	
Captain of Police	9	8	9	1
Lieutenant of Detectives	4	4	4	
Lieutenant of Police	11	11	11	
Detective Sergeant	12	12	12	
Legal and Administrative Detective	1	1	1	
Detective	76	69	76	7
Police Sergeant	85	83	85	2
Traffic Accident Investigator	1	1	1	
Garage Supervisor, Police	1	1	1	
Assistant Garage Supervisor, Police	3	3	3	
Police Patrolman	1051	1001	1024	23
Policewoman	5	4	5	1
Garage Attendant	3	2	3	1
Jail Matron	10	10	10	
Chief Operator of Police Alarm	1	1	1	
Assistant Chief Operator of Police Alarm	2	2	2	
Police Alarm Operator	29	29	29	
Superintendent of Police Communications	1	1	1	
Assistant Superintendent of Police Communications	1	1	1	
Radio Mechanic	10	8	10	2
Police Identification Superintendent	1	1	1	
Secretary, Police Department	1	1	1	
Administrative Police Lieutenant	3	3	3	
Administrative Assistant I	2	2	2	
Handwriting Technician	1	1	1	
Custodian of Police Property	1	1	1	
Assistant Custodian of Police Property	1	1	1	
Police Identification Supervisor	1	1	1	
Identification Technician	5	4	5	1
Clerk Stenographer IV	1	1	1	
Clerk IV	1	1	1	
Law Stenographer III	1	1	1	
Stores Clerk II	1	1	1	
Clerk Stenographer III	3	3	3	
Tabulating Equipment Operator	1	1	1	
Duplicating Equipment Operator	1	1	1	
Teller I	1	1	1	
Clerk Stenographer II	20	20	20	
Clerk Typist II	2	2	2	
Clerk II	1	1	1	
Clerk III	1	1	1	
Key Punch Operator II	1	1	1	
Clerk Stenographer I	1	1	1	
Clerk Typist I	2	0	2	2
Physician, Police (Two-thirds time)	5	5	5	
Building Maintenance Supervisor I	1	1	1	
Maintenance Mechanic	2	2	2	
Maintenance Worker	1	1	1	
Window Washer	1	1	1	
Custodial Worker II	30	30	30	
Elevator Operator II	5	5	5	
Painter	2	2	2	
Total	1424	1356	1397	41



TABLE II-ACHANGES IN POLICE PERSONNEL DURING 1950

1. Present for duty, January 1, 1950 . . . . .	1356
2. Recruited during the year . . . . .	143
3. Reinstated during the year . . . . .	3
4. Returned from armed services . . . . .	<u>1</u>
TOTAL . . . . .	1503
5. Separations from service	
(a) Voluntary resignations . . . . .	14
(b) Retirement on pension	
1. Annuity . . . . .	55
2. Disability . . . . .	12
(c) Resigned with charges pending . . . . .	0
(d) Dropped during probation. . . . .	3
(e) Killed in line of duty. . . . .	0
(f) Dismissed for cause . . . . .	4
(g) Deceased . . . . .	3
(h) Enlisted and inducted into the Armed Forces. . . . .	<u>15</u>
TOTAL . . . . .	106
6. Present for duty, December 31, 1950 . . . . .	1397



TABLE III  
REPORT OF THE POLICE PHYSICIANS

	<u>1949</u>	<u>1950</u>
1. Number of cases of sickness and injury of members and employees of the department . . . . .	2261	1924
2. Number of days lost by members and employees as the result of sickness and injury . . . . .	13075	14010
3. Number of calls made on members and employees who reported sick or injured. . . . .	2108	2117
4. Number of special medical examinations. . . . .	140	140
5. Special examinations -- applicants for Patrolmen. . . . .	311	89
6. Examinations of Probationary Patrolmen. . . . .	56	136
7. Examinations of Patrolmen (Reinstatement from Military Service)	0	1
8. Examination of Applicants for Policewoman. . . . .	1	16
9. Military Leave Examinations. . . . .	0	19

TABLE III-A  
URINALYSIS

EXAMINATIONS OF PERSONS ARRESTED FOR OPERATING

MOTOR VEHICLE WHILE UNDER THE INFLUENCE OF INTOXICATING LIQUOR

<u>Month</u>	<u>1949</u>	<u>1950</u>
January . . . . .	59	57
February . . . . .	75	58
March . . . . .	65	56
April . . . . .	69	65
May . . . . .	75	60
June . . . . .	42	60
July . . . . .	54	78
August . . . . .	48	74
September . . . . .	48	84
October . . . . .	62	55
November . . . . .	59	65
December . . . . .	67	82
TOTAL . . . . .	723	794

Note: All urinalysis specimens voluntarily submitted by persons arrested for this charge.



TABLE IV

## OFFENSES KNOWN TO THE POLICE

1950

Offenses	Jan.	Feb.	Mar.	Apr.	May	June	July	Aug.	Sept.	Oct.	Nov.	Dec.	1950 TOTAL	1949 TOTAL	1948 TOTAL
Criminal Homicide															
a. Murder & Non-negligent manslaughter	2	1	-	4	-	-	1	1	-	-	1	-	10	10	11
b. Mansl. by negl.	2	4	5	4	2	2	1	1	-	3	-	2	26	10	19
Rape	1	2	4	9	1	2	3	5	2	4	-	3	36	37	4
Robbery	19	4	7	8	1	5	6	6	10	3	5	8	82	104	72
Aggravated Assault	8	2	8	11	12	9	13	14	16	10	24	22	149	121	93
Burglary	39	58	61	30	47	64	58	67	68	65	52	64	673	746	638
Larceny															
a. \$50 and over	51	67	62	75	89	99	109	123	112	125	112	98	1122	1025	1014
b. Under \$50	244	218	285	393	451	481	411	483	405	498	316	248	4433	3896	3818
Auto Theft	62	54	79	70	106	101	87	80	80	88	61	66	934	638	765
TOTAL	428	410	511	604	709	763	689	780	693	796	571	511	7465	6587	6434



ADULT ARRESTS AND JUVENILE DETENTIONS1950

	<u>Persons over</u> <u>18 years of age</u>	<u>Persons under</u> <u>18 years of age</u>
1. Criminal Homicide		
(a) Murder and non-negligent manslaughter	5	0
(b) Manslaughter by negligence	7	0
2. Rape	112	25
3. Robbery	92	15
4. Aggravated Assault	64	8
5. Burglary--breaking or entering	142	304
6. Larceny--theft (except auto theft)	454	633
7. Auto Theft	73	282
8. Other Assaults	805	23
9. Forgery and counterfeiting	173	2
10. Embezzlement and fraud	425	12
11. Stolen property; buying, receiving possessing	15	18
12. Weapons; carrying, possessing, etc.	141	21
13. Prostitution and commercialized vice	71	0
14. Sex Offenses (except 2 and 13)	316	124
15. Offenses against the family and children	315	4
16. Narcotic drug laws	83	5
17. Liquor laws	8	0
18. Drunkenness	14821	77
19. Disorderly Conduct	2251	414
20. Vagrancy	1852	3
21. Gambling Laws	181	0
22. Driving while intoxicated	1062	4
23. Violation of road and driving laws	30830	552
24. Parking violations	108458	2
25. Traffic and motor vehicle laws (except 22-24)	2037	252
26. All other offenses	<u>1544</u>	<u>1219</u>
TOTAL	166337	3999
Suspicion Arrests.	<u>592</u>	<u>0</u>
GRAND TOTAL	166929	3999

58471



TABLE VI  
MONTHLY STATEMENT OF ARRESTS

	<u>1950</u>			
	<u>STATE CASES</u>	<u>CITY CASES</u>	<u>MISC. CASES</u>	<u>TOTAL</u>
January . . . . .	759	10679	30	11468
February. . . . .	713	10870	36	11619
March . . . . .	722	12244	21	12987
April . . . . .	811	12142	34	12987
May. . . . .	837	16671	27	17535
June . . . . .	838	13753	16	14607
July . . . . .	863	13040	23	13926
August. . . . .	886	13816	30	14732
September . . . . .	833	12933	25	13791
October . . . . .	850	14902	25	15777
November. . . . .	786	13132	21	13939
December. . . . .	814	12129	26	12969
 TOTAL . . . . .	 9712	 156311	 314	 166337



TABLE VII

NATIVITY OF ADULTS ARRESTED1950

United States . . . . .	54899
Germany . . . . .	498
Austria, Hungary. . . . .	258
Poland. . . . .	303
Russia. . . . .	144
Norway. . . . .	92
Italy . . . . .	103
Slavania, Croatia, Bohemia. . . . .	175
Canada. . . . .	87
Mexico. . . . .	108
Ireland . . . . .	50
Greece. . . . .	33
Sweden. . . . .	61
Belgium . . . . .	16
All Other . . . . .	<u>1463</u>
TOTAL . . . . .	58290**

AGE OF ADULTS ARRESTED

Between 18 and 19 years . . . . .	3793
Between 20 and 29 years . . . . .	21595
Between 30 and 39 years . . . . .	12784
Between 40 and 49 years . . . . .	10251
Between 50 and 59 years . . . . .	6488
Between 60 and 69 years . . . . .	2739
Between 70 and 79 years . . . . .	456
Between 80 and 89 years . . . . .	35
Between 90 and 100 years. . . . .	0
Not Given . . . . .	<u>149</u>
TOTAL . . . . .	58290**

DOMESTIC STATUS

Married . . . . .	27505
Single. . . . .	22413
Widow-(er). . . . .	1574
Divorced. . . . .	3703
Separated . . . . .	1691
Not Given . . . . .	<u>1404</u>

TOTAL. . . . . 58290\*\*

COLOR

White . . . . .	52944
Black . . . . .	4904
Yellow. . . . .	47
Copper. . . . .	395
Not Given . . . . .	<u>0</u>

TOTAL. . . . . 58290\*\*

\*\*108,047 Parkers not included in the above totals.



DETECTIVE BUREAU

The Detective Bureau investigated 13,530 complaints of a criminal nature; 7,377 letters and communications were investigated; 7,792 persons were interviewed and 280 verbatim statements were taken during 1950. There were 70 cases of suicide and 120 attempted suicides investigated by members of the Bureau. A total of 1,635 persons were reported missing during the year and 1,534 were located.

A total of 2,964 arrests were made by members of the Detective Bureau. There were 393 fugitives arrested by members of this Department and turned over to other jurisdictions and 197 arrested by other departments and returned here.

TABLE VIIIAUTO THEFT STATISTICS

	<u>1949</u>	<u>1950</u>
Thefts . . . . .	269	395
Recoveries . . . . .	259	368
Missing. . . . .	10	27
Joyrides . . . . .	373	538
Total Thefts . . . . .	642	933
Total Recoveries . . . . .	632	906
Outside Cars Recovered . . . . .	52	54
Total value of cars reported stolen. . . . .	.\$641,686	\$1,032,351
Total value of cars recovered		
(a) Local . . . . .	\$594,212	\$865,845
(b) Outside. . . . .	\$ 52,425	\$240,680
Percentage of recoveries. . . . .	98.4%	97.1%



## BUREAU OF IDENTIFICATION

The total number of prisoners registered in the Bureau of Identification during 1950 was 6,420 compared to 6,159 in 1949 and 6,457 in 1948. Of the total number of prisoners 65% had previous fingerprint records here or elsewhere. Of the total number of prisoners, 1,477 or 23% were transients.

A summary of the work performed by the Bureau is as follows:

Number of fingerprints taken during the year.....	18,633
Number of fingerprints mailed to other jurisdictions.....	9,189
Latent fingerprint investigations.....	178
New prisoners photographed.....	1,973
Copies of new prints.....	3,946
Photostatic copies of miscellaneous matter.....	10,530

During 1950, the Photographic Division produced 26,293 photographic prints as compared with 24,329 for the previous year.

There were 4,758 applicants for bartender licenses and 3,069 applicants for taxicab driver licenses registered and fingerprinted by the Bureau.

In 178 cases investigations were made at the scenes of crime for the purpose of developing latent fingerprint evidence, and in 180 additional cases objects were brought to the Bureau to be examined for fingerprint evidence. A total of 36 identifications were made during the year through fingerprints developed in these cases.

During the year 1950, the Bureau of Identification was called upon to assist members of the Detective Bureau in solving 20 difficult cases involving "inside" thefts reported in offices, stores, locker-rooms, hospitals, etc., in which the sneak thief continued to operate successfully despite the employment of the usual methods to effect his apprehension.

Frequently during the past year the Bureau was called upon to obtain tiny identifying jewelers' scratch marks on rings, wrist watches, and other objects and in every instance the numbers were read by the use of the binocular microscope. Ultra-violet light machines were used on many occasions to read faint and illegible writings and to detect changes made in documents, identification cards, etc.

There were 4,004 handwriting cards classified according to the Lee and Abbey system making a total of 53,094 cards in the file. During the year this file proved valuable in the examination of questioned documents and identification of persons who had committed forgeries and fraudulently issued bank checks.

CRIMINAL GALLERY

During the year of 1950, the photographs in the Criminal Gallery were arranged according to age, sex and color. Previous to this change, it was tedious and tiresome for victims to view photographs in numerical sequence, and identifications were few. With the new arrangement, the victim is only required to view the group corresponding with his description of the perpetrator, and since May of 1950, when the new arrangement was completed, eight positive identifications, of persons perpetrating the crime, were made.



JUVENILE DELINQUENCY PREVENTION PROGRAMAND THE YOUTH AID BUREAU

In Milwaukee since the establishment of the Youth Aid Bureau and the new system adopted in 1946 wherein each member of the Police Department was trained to understand the juvenile problem, a substantial decrease has been shown in juvenile delinquents. In 1945, the year prior to the establishment of the new juvenile policy, there were 6,302 juvenile detentions by this Department; for the year 1950 there were 3,999.

As a result of this program each officer is instructed to assume an intelligent, understanding, and sympathetic attitude and to treat the pre-delinquent child in this manner. Therefore, all members of the Department are virtually juvenile crime prevention agents.

The Youth Aid Bureau serves as a nucleus and a clearing house for all referrals made to the Bureau of those juveniles that the individual police officer has difficulty in rehabilitating. A supplementary case history on a regular form is made for each referral received. A continuous record is kept on this form of all interviews, contacts, and investigations. Members assigned to duty in the Bureau made 6,394 personal contacts regarding referred juveniles. These contacts included interviews with the child, parents, school and the probation department.

A total of 1,391 investigations were made on complaints received from schools, churches, civic and fraternal groups, theatres, sweet shops, citizens, etc. Vandalism, disorderly conduct, destruction of property, minors loitering or drinking in taverns, and minor larcenies were the chief cause of complaint. The more serious charges involved sex offenses, runaways, contributing to the delinquency of a minor by an adult and premiscuous neglect of children on the part of parents or guardians.

Members assigned to the Bureau also made 4,039 regular inspections and visits to youth centers, social centers, clubs, taverns, soda fountains, sweet shops, restaurants, roller skating rinks, meeting halls, theatres, after-school assemblies, athletic events, etc. These inspections are routine daily activities for the members of the Bureau and are not a part of the investigations made on complaint from such sources.

Officers from the Bureau were assigned to give a total of 45 talks pertaining to juvenile delinquency and various juvenile problems before church groups, clubs, civic and fraternal organizations during the year. Members of the Bureau also conducted 73 groups on educational tours through the Safety Building.

One of the Police Department's best weapons in combating juvenile delinquency is the splendid working relationship that has been established between the police and the youth of the city. Through this close contact with police, the youths realize--some for the first time--that a policeman is their friend. It tends to instill in the minds of boys and girls respect and affection, rather than fear and mistrust for the representatives of law and order.



POLICE TRAINING SCHOOL

The Milwaukee Police Department Training School maintains an in-service educational program for 1,336 police employees. During 1950, the Training School conducted 139 classes in the following subjects:

Pedestrian Control Law -- Hand Signal Ordinance  
 Review of New State Laws  
 "Know Your Money" (Detecting counterfeits and the work of the Treasury Department of the Federal Government.)  
 New and Amended State and Federal Firearms Laws  
 Courtesy, Complaints, and Commendations  
 Police Interest in Juvenile Delinquency  
 Juvenile Delinquency -- Problems of Maladjusted Children  
 The Tax Dollar and the Budget Dollar  
 Police Observation  
 Traffic Control and Handling Crowds  
 Military Drill -- Parade Duty

In addition, special expert lectures were included as follows:

"The Problem Drinker" by Mr. Harry Mielcarek, Public Relations Director, Allis Chalmers Mfg. Co.  
 "The Keeley Polygraph or Lie Detector" by Superintendent Rudolph Glaser, Bureau of Identification, Milwaukee Police Department  
 "Narcotics" by Mr. Robert Artis, Agent in Charge, Federal Bureau of Narcotics, Chicago, Illinois.

The Training School conducted "specialized" training for all ambulance men in the operation of the resuscitators and respirators. Twenty-six police sergeants completed the Red Cross Instructor's course and were added to the training staff as instructors in First Aid.

A class in the use of the Lukiesh-Moss visibility indicator was conducted for 34 sergeants by the Building Inspector's Office of the City of Milwaukee.

Each man attending classes qualified indoors with his service revolver scoring at least 80 percent out of a possible 100 percent in order to qualify. Detectives and squad men qualified at the Lake Park Gun Club in hip-shooting, riot gun, rifle, and machine gun practice.

A total of 126 newly appointed patrolmen received training during 1950.

There were 14 sessions of the Bicycle Violators School conducted with 431 violators and 133 visitors in attendance.

A new assignment was given the Training School in 1950, that of setting up and conducting training classes for the civilian School Crossing Guards organization of the Milwaukee Safety Commission. The first such class of 76 women guards began a 5 day training session on March 20, 1950. The course was both academic and actual practice in the type of work such guards would be expected to do. On September 25, 1950, a second group of 43 School Crossing Guards began a similar training session. The entire group of guards were called in for two special two hour training sessions as part of their in-service training.

In the field of Public Relations, 26 speeches by personnel of the School were given to various civic, fraternal, and church organizations, and the attendance at these appearances numbered in excess of 9,000 persons.



## COMMUNICATIONS BUREAU

Communications Bureau personnel worked closely with the Milwaukee Civil Defense and Disaster Committee as members of the Communications Division. Police radio equipment was installed at the Control Center for communication with the Police Radio Station and Police and Sheriffs' offices in surrounding counties.

The 1,195 police call boxes were opened for emergency telephone calls from the public on February 7, because of the imminence of a general telephone strike. The call boxes have been left accessible to the public since that date and are now also used by employees of some City Departments for reporting to their offices.

Reclassification of 29 of the 43 Patrolmen assigned to Telephone Operator and Radio Dispatcher duties to the rank of Police Alarm Operator became effective January 1. Two patrolmen assigned to Radio Mechanic duty were reclassified as additional Radio Mechanics on June 2.

An additional switchboard position was added to the headquarters telephone switchboard on August 1, making this a 5-position board.

Frequencies of all of our older police mobile radio transmitters were changed from near 35 megacycles during the summer by order of the Federal Communications Commission.

The change-over to the 152-174 mc band continued with the installation of VHF equipment in police vehicles. Change-over of three-wheeled servi-car vehicles used by the traffic checkers from one-way to two-way radio was started by installation of two-way equipment in three such units.

The total transmissions from KSA-536 for 1950 were 231,889 while in 1949 the total transmissions were 208,567. Total transmissions from cars on the street to the dispatcher were 374,906 in 1950 compared to 313,106 in 1949.

<u>MONTH</u>	<u>OUTGOING</u>		<u>RUNS</u>	<u>INCOMING</u>
	<u>CALLS</u>	<u>ORDERS</u>		<u>MOBILE CALLS</u>
January	16071	5395	7827	27712
February	14632	4943	7180	25818
March	16933	5924	8056	28152
April	18510	6279	8916	31348
May	21187	7100	10395	34027
June	21711	7595	10494	32984
July	21651	7269	10819	32194
August	20999	7034	10425	30619
September	20306	7005	10002	31922
October	21176	7366	10344	33893
November	18592	6457	9014	31902
December	20121	6657	10186	34335
1950	231889	79024	113658	374906

The total orders sent to Fire Department vehicles in 1950 amounted to 6339 and a total of 15,649 incoming calls were received from these vehicles.

The radio service furnished to the sheriff and other police departments in the county is also increased in 1950. There were 32,926 orders sent out and 63,712 incoming mobile calls were received.

There were 6491 intercity messages transmitted and 9716 such messages received by the Radio Bureau.



TRAFFIC BUREAU

New pedestrian regulations which require that they cross business streets only at intersections and then in accordance with the traffic control functioning at that intersection became effective January 1, 1950. A total of 625 pedestrians received warning cards and 572 arrests were made. Motorists are also required to give hand signals when turning if their cars are not equipped with flashing lights.

There were 142,387 arrests for traffic violations during 1950 as compared to 103,375 for 1949. A total of 19,049 warning cards were issued to motorists for minor violations of the traffic code and bad driving practices as compared to 24,065 for 1949. During the year, 5383 bicyclists received warning cards for violations of the Bicycle Ordinance or Traffic Code as compared to 8815 for 1949; the total attendance at the Bicycle Violator's School was 554 for 1950 as compared to 1,033 for 1949. There were 299 ten day suspensions of Bicycle Licenses.

There were 23,289 traffic accidents in 1950 compared to 19,647 for 1949, an increase of 19%. (For complete traffic accident statistics see pages 27 to 36 Tables XII-A to XII-K.)

VICE SQUAD

There were 593 complaints received and investigated by the Vice Squad during 1950 compared to 602 during 1949; 1,453 arrests were made by members of the squad during the current year.

	<u>1949</u>	<u>1950</u>
Disorderly houses and prostitution.....	73	59
Gambling.....	68	65
Liquor violations.....	11	24
Fortune telling.....	6	4
Narcotic complaints.....	36	105
Other complaints.....	408	316

Known gambling establishments, houses of prostitution and premises suspected of engaging in these activities were constantly under the surveillance by members of the Vice Squad for the purpose of securing evidence to procure search warrants and prosecution in court.

PROPERTY BUREAU

The following is an activity report of the Property Bureau for the year 1950:

Total number of inventories received from District Stations.....	11,822
Property turned over to owners by Property Bureau (Inventories).....	8,411
Total amount of money inventoried.....	\$58,833
Lost or stray animals - sent to Wis. Humane Society.....	689
Lost or stray animals - returned to owners.....	37
Requisitions filled for Departmental Supplies.....	2,476



## HOMICIDES - 1950

Mrs. Viola King, 55, and Mrs. Ida Seramor, 80, both residing at 4204 N. 14th Street, were bludgeoned to death while in the bedroom of their home by Henry King, 47, husband of Mrs. King. The crime took place between 6:00 P.M., January 15th and 11:45 A.M., January 16th. Evidence indicates Mr. King had been brooding over marital troubles and it is believed that he was berserk at the time. Cleared: Henry King committed suicide apparently immediately after the slaying by hanging himself in the basement of the home.

Charles Williams, (col.) 25, of 701 W. Juneau Avenue, was shot and killed during an argument in a tavern at 1454 N. 10th Street at 11:20 P.M., February 17, 1950. He was conveyed to the County Emergency Hospital and pronounced dead on entrance. Five bullets had entered his body. Cleared: John Mosley (col.), arrested February 18, 1950 and convicted of Murder, sentenced May 22, 1950, to 14-25 years, Wisconsin State Prison.

Jim Riley, (col.) 54, of Wood, Wisconsin, on Saturday, April 8, 1950, at 4:50 P.M. was shot and stabbed several times while in the home of Gertrude Hodges, (col.), at 1210 N. 7th Street. Victim died at 7:05 A.M. on April 9, 1950, at the County Emergency Hospital. Cleared: Gertrude Hodges, 43, arrested April 8, 1950, charged with First Degree Murder; Sentenced by the Municipal Court on May 12, 1950, to the Central State Hospital for Insane, Waupun, Wisconsin.

John Turner, (col.) 30, 1942 N. 7th Street, his body with three stab wounds in torso was found about 7:00 P.M. on Saturday, April 22, 1950, in front of 2134 N. Terrace Avenue. He was lying on the roadway between the curb and his parked 1936 Ford Coach by two girls who thought that he was a victim of a hit-and-run accident. Investigation revealed that the car had been seen stopping in the 2100 block on N. Terrace Avenue and two men were apparently fighting and three women who were with them attempted to separate them. Case not cleared. An exhaustive investigation failed to reveal the persons who were with John Turner the night of the fatal stabbing and the assailant is not known as yet.

Charles Magestro, alias Carmello Magestro, 31, of 165 N. Jefferson Street, at 4:30 P.M. on Tuesday, April 25, 1950, while in his back yard was fired upon with a shot gun by a neighbor, Carmelo Barbera, 63, of 171 N. Jefferson Street. His arms, chest, and back were pierced by 28 pellets and one passed through his lung causing a fatal hemorrhage. The blast also injured Charles Magestro, Sr., father of the murder victim. This shooting climaxed the friction that existed between these neighbors as to the boundary lines of their adjoining lots. Cleared: Carmelo Barbera arrested April 25, 1950 and sentenced on October 6, 1950, to 14-25 years, Wisconsin State Prison, for Second Degree Murder and from 1-8 years, Wisconsin State Prison, on a charge of Assault Regardless of Human Life.

Wilbert Brown (col.), 33, 711 W. Reservoir Avenue, was bludgeoned over the head with a blackjack and stabbed in the abdomen with a knife by Oscar Dalton, (col.), 20, of 1708 N. 5th Street, at about 9:30 A.M. on July 23, 1950, after an argument which occurred in front of 1408 N. 6th Lane; victim died as a result of the stab wound in the liver on August 2, 1950, at 11:50 P.M. Cleared: Oscar Dalton, (col.), arrested August 6, 1950, convicted of Murder-2nd degree on November 13, 1950 and sentenced to a term of 14-25 years in Wisconsin State Prison.



Raymond Henning, Sr., 50, of 2324 W. Highland Avenue, was shot and killed in a tavern at 2337 W. State Street at 10:10 P.M., Wednesday, August 2, 1950, by a holdup man. He had held up the bartender and six patrons at the point of a revolver. The victim, who was one of the patrons and father of the bartender, offered resistance. The bandit fired four or five shots. One bullet hit Henning in the chest penetrating the heart and killing him instantly. The bandit fled without obtaining any loot at the scene. Uncleared: Although Phillip Jaeger first was identified as the murderer by witnesses and who admitted several holdups in this city about that time, further investigation revealed that he was not in the City of Milwaukee on the evening of the crime. Further search is continuing for the person responsible for this crime.

#### MANSLAUGHTER

Edmond Calvin, (col.), 44, of 1325 W. Brown Street, at 4:00 P.M., Tuesday, April 4, 1950, was shot in the jaw and neck with a revolver by his mother-in-law, Mrs. Ada Dunlap, after a quarrel in their home. Calvin died at the County Emergency Hospital on April 6, 1950. Cleared: Ada Dunlap, 63, arrested and charged with manslaughter-4th degree; case dismissed by Court, May 8, 1950, as evidence indicated she acted in defense of her daughter.

George L. Houston, (col.) 20, of 1702 N. 5th Street, at 11:30 P.M. on November 11, 1950, became involved in a fight which took place at a tavern at 710 W. Reservoir Avenue. During the fight he was stabbed twice in the chest by a Nealy Thompson, (col.), 23, of 2007 N. 9th Street, with a knife. The blade penetrated the heart. The victim was pronounced dead at the County Emergency Hospital. Cleared: Nealy Thompson, (col.), arrested November 12th, was bound over to Municipal Court and on February 26, 1951, was sentenced to 2-4 yrs., Wisconsin State Prison, Waupun, on conviction of Manslaughter-3rd degree.

#### JUSTIFIABLE HOMICIDE

Murray B. Henry, (col.) 22, of 1236-B N. 9th Street, apparently mentally deranged, shot and wounded three persons with a 16-gauge shotgun at 1719 N. 5th Street, on September 7th, at 6:35 P.M. He fled the scene of the shooting to the rear of the garage at 1236 N. 35th Street, where he was traced by Detective Sergeant Charles Huepper, who had received the description of the fugitive from a radio broadcast. Detective Sergeant Huepper located Henry crouching under burlap bags and ordered him to surrender. Henry reached for his shotgun and was raising it to shoot Detective Sergeant Huepper. In defense of his life Huepper quickly fired three shots at Henry. Upon entering County Emergency Hospital Henry was pronounced dead. The case was classified as Justifiable Homicide.

Herbert Wolf, 47, 1214 S. 18th Street, died from a stab wound inflicted by Robert Schoerner, 16, who had come to his mother's defense after an argument in the Schoerner home on December 20, 1950, at 5:00 P.M. The argument was over some electrical work. Cleared: Robert Schoerner was arrested for the offense and after an inquest by the Medical Examiner the jury's verdict was Justifiable Homicide. The charges against Mrs. Lillian Schoerner were also dismissed.



TABLE X

MISCELLANEOUS SERVICES1 9 5 0

	First	Second	Third	Fourth	Fifth	Sixth	Seventh	Traffic	Total
Accidents investigated	5445	2248	3438	1487	3850	2139	3066	2765	24438
Ambulance calls	4245	1485	707	1692	2087	480	1696		12392
Complaints investigated	18874	5937	9464	5693	10256	7471	4773		62468
Defective sidewalk & sts. rptd.	523	2035	3777	574	2495	3300	70		12774
Destitute persons cared for	0	1	0	0	0	0	0		1
Doors reported open	626	506	557	210	711	327	614		3551
Drowned bodies recovered	6	3	0	1	2	0	0		12
First aid rendered	4733	688	546	1679	356	547	500		9049
Insane persons taken into custody	9	0	0	0	2	0	1		12
Letters & Comm. investigated	41061	20921	19362	14998	19303	17193	14574	14536	161948
License applications investigated	3124	723	1209	939	1870	993	1432		10290
Liquor Law -- Investigations	3266	1629	3265	1431	1347	1930	1560		14428
Lodgers accommodated	65	148	14	64	43	33	13		380
Lost children restored to parents	239	46	76	46	109	14	169		699
Official letters delivered	7564	858	1658	1535	2615	645	2018		16893
Official notices served	1553	78	104	2121	0	67	0		3923
Patrol wagon calls	13319	2055	2198	1270	2647	1395	1342		24226
Persons rescued from drowning	1	0	0	0	0	0	0		1
Persons reported missing	496	242	247	138	258	146	155		1682
Sick and injured conveyed	6489	1792	777	1678	2082	547	1527		14892



TABLE XI

## DISTRIBUTION OF PLANT EQUIPMENT

	First	Second	Third	Fourth	Fifth	Sixth	Seventh	Garage	Total
Original cost of Bldg. (not including land)	\$1,595,969	\$32,872	\$135,000	\$23,387	\$22,320	\$85,248	\$84,980	----	\$1,979,776
Year Built	1930	1892	1937	1904	1904	1927	1928	----	----
Pop. of Dist. (est.)	109,400	43,764	97,287	60,563	118,300	75,215	128,122	----	*632,651
Area in Square Miles	4.92	2.89	7.38	6.02	7.45	7.96	14.54	----	51.16
Number of Ambulances	1	1	----	1	1	----	1	----	5
Number of Patrol Wagons	----	----	----	----	----	----	----	2	2
Comb.Amb. Patrol Wagons	1	1	1	1	1	1	1	2	9
Number of Automobiles (all two-way radio equip.)	6	5	6	5	8	6	10	53	99
Number of Motorcycles (all radio equipped)	----	----	----	----	----	----	----	53	53
Number of Servi-Cars (all radio equipped)	----	----	----	----	----	----	----	15	15
Number of Police Signal Boxes	222	91	194	145	193	128	242	----	1215
Boxes with lights	191	68	106	42	56	39	67	----	569
Police Motor Boats	----	----	----	----	1	----	----	----	1
Number of Burg. Alarm Stations	16	----	3	1	1	2	1	----	24
Other Mech. Equip.(Trucks)	1	----	2	----	1	----	----	----	4

\*1950 Federal Census



TABLE XII-ADEATHS AS THE RESULT OF MOTOR VEHICLE ACCIDENTS

The following tabulation includes all deaths resulting from motor vehicle accidents in public places within the city limits of Milwaukee.\*

<u>Year</u>	<u>Total Fatalities</u>
1930 . . . . .	90
1931 . . . . .	86
1932 . . . . .	86
1933 . . . . .	72
1934 . . . . .	66
1935 . . . . .	66
1936 . . . . .	70
1937 . . . . .	65
1938 . . . . .	41
1939 . . . . .	56
1940 . . . . .	68
1941 . . . . .	61
1942 . . . . .	48
1943 . . . . .	49
1944 . . . . .	31
1945 . . . . .	53
1946 . . . . .	43
1947 . . . . .	51
1948 . . . . .	43
1949 . . . . .	48
1950 . . . . .	43

\*Report does NOT include:

- (a) Deaths resulting from accidents which occurred off the street, or private (home or industrial) premises.
- (b) Deaths from traffic accidents not involving motor vehicle, such as street car striking pedestrian, train striking pedestrian, horse-drawn vehicle.



TABLE XII-B  
ANALYSIS OF TRAFFIC ACCIDENTS - 1950

<u>Type of Accident</u>	<u>All Accidents</u>	<u>Fatal</u>	<u>Non- Fatal</u>	<u>Property Damage</u>	<u>Total Killed</u>	<u>Total Injured</u>
Collision of Motor Vehicle with:						
1. Pedestrian	1489	34	1456	-	34	1542
2. Other motor vehicle	9586	3	1650	7932	3	2334
3. Railroad train	43	2	15	26	2	24
4. Street car	249	2	50	197	2	65
5. Animal-drawn vehicle	11	-	3	8	-	3
6. Bicycle	151	-	138	13	-	141
7. Animal	-	-	-	-	-	-
8. Fixed object	832	2	313	517	2	410
9. Other object	-	-	-	-	-	-
10. Overturned in roadway	-	-	-	-	-	-
11. Ran off roadway	-	-	-	-	-	-
12. Other non-collision	-	-	-	-	-	-
13. MOTOR VEHICLE TRAFFIC TOTAL	12361	43	3625	8693	43	4519
14. R.R. Not with Motor Veh.	2	1	1	-	1	1
15. Street car--not with Mot.Veh.	42	-	42	-	-	43
16. Other not with Motor Veh.	39	-	38	1	-	40
TOTAL TRAFFIC	12444	44	3706	8694	44	4603



TABLE XII-C  
ANALYSIS OF TRAFFIC ACCIDENTS  
COMPARATIVE TOTALS \*

	1 9 5 0			1 9 4 9		
<u>Type of Accident</u>	<u>All</u> <u>Accidents</u>	<u>Persons</u> <u>Killed</u>	<u>Persons</u> <u>Injured</u>	<u>All</u> <u>Accidents</u>	<u>Persons</u> <u>Killed</u>	<u>Persons</u> <u>Injured</u>
Collision of Motor Vehicle with:						
1. Pedestrian	1489	34	1542	1420	34	1470
2. Other motor vehicle	9586	3	2334	7619	7	1827
3. Railroad train	43	2	24	33	4	28
4. Street car	249	2	65	305	1	95
5. Animal-drawn vehicle	11	-	3	5	-	1
6. Bicycle	151	2	141	208	-	199
7. Animal	-	-	-	-	-	-
8. Fixed object	832	-	410	659	3	364
9. Other object	-	-	-	-	-	-
10. Overturned in Roadway	-	-	-	-	-	-
11. Ran off roadway	-	-	-	-	-	-
12. Other non-collision	-	-	-	-	-	-
MOTOR VEHICLE TRAFFIC TOTAL	12361	43	4519	10249	49	3984

\*Tables include motor vehicle traffic accidents only.



TABLE XII-D  
ANALYSIS OF TRAFFIC ACCIDENTS \*  
BY AGE GROUP AND RACE

	<u>PERSONS KILLED</u>								
	<u>ALL PERSONS</u>			<u>PEDESTRIANS</u>			<u>BICYCLISTS</u>		
	<u>Total</u>	<u>Male</u>	<u>Female</u>	<u>Total</u>	<u>Male</u>	<u>Female</u>	<u>Total</u>	<u>Male</u>	<u>Female</u>
1. 0-4 years	2	1	1	2	1	1	-	-	-
2. 5-9 years	2	2	-	2	2	-	-	-	-
3. 10-14 years	-	-	-	-	-	-	-	-	-
4. 15-19 years	1	-	1	-	-	-	-	-	-
5. 20-24 years	-	-	-	-	-	-	-	-	-
6. 25-34 years	3	2	1	1	1	-	-	-	-
7. 35-44 years	2	1	1	1	1	-	-	-	-
8. 45-54 years	8	6	2	6	4	2	-	-	-
9. 55-64 years	12	11	1	10	9	1	-	-	-
10. 65-74 years	9	8	1	8	7	1	-	-	-
11. 75 and over	4	2	2	4	2	2	-	-	-
12. Not stated	-	-	-	-	-	-	-	-	-
TOTAL PERSONS	43	33	10	34	27	7	-	-	-
13. White	39	29	10	32	25	7	-	-	-
14. Negro	4	4	-	2	2	-	-	-	-
15. Other	-	-	-	-	-	-	-	-	-
16. Not stated	-	-	-	-	-	-	-	-	-
TOTAL PERSONS	43	33	10	34	27	7	-	-	-

\*Tables include motor vehicle traffic accidents only.



TABLE XII-E

ANALYSIS OF TRAFFIC ACCIDENTS\*BY AGE GROUP AND RACEPERSONS INJURED

	ALL PERSONS			PEDESTRIANS			BICYCLISTS		
	Total	Male	Female	Total	Male	Female	Total	Male	Female
1. 0-4 years	294	178	116	155	100	55	3	3	-
2. 5-9 years	459	293	166	338	219	119	29	25	4
3. 10-14 years	208	135	73	77	41	36	83	70	13
4. 15-19 years	391	239	152	77	40	37	22	20	2
5. 20-24 years	585	386	199	46	21	25	-	-	-
6. 25-34 years	731	439	292	110	65	45	1	1	-
7. 35-44 years	536	290	246	127	77	50	-	-	-
8. 45-54 years	423	235	188	156	101	55	-	-	-
9. 55-64 years	359	203	156	189	129	60	1	1	-
10. 65-74 years	229	142	87	138	97	41	-	-	-
11. 75 and over	66	41	25	44	31	13	-	-	-
12. Not stated	238	165	73	85	61	24	2	2	-
TOTAL PERSONS	4519	2746	1773	1542	982	560	141	122	19
13. White	4231	2548	1683	1444	913	531	128	110	18
14. Negro	283	193	90	95	66	29	13	12	1
15. Other	1	1	-	-	-	-	-	-	-
16. Not stated	4	4	-	3	3	-	-	-	-
TOTAL PERSONS	4519	2746	1773	1542	982	560	141	122	19

\*Tables include motor vehicle traffic accidents only.



TABLE XII-F  
ANALYSIS OF TRAFFIC ACCIDENTS\*  
HOURLY OF DAY

	<u>All</u> <u>Accidents</u>	<u>Fatal</u> <u>Accidents</u>
1. Midnight to 12:59 A.M. . . . .	438	4
2. 1:00 A.M. to 1:59 A.M. . . . .	437	3
3. 2:00 A.M. to 2:59 A.M. . . . .	411	3
4. 3:00 A.M. to 3:59 A.M. . . . .	211	-
5. 4:00 A.M. to 4:59 A.M. . . . .	119	-
6. 5:00 A.M. to 5:59 A.M. . . . .	63	-
7. 6:00 A.M. to 6:59 A.M. . . . .	275	-
8. 7:00 A.M. to 7:59 A.M. . . . .	485	-
9. 8:00 A.M. to 8:59 A.M. . . . .	416	-
10. 9:00 A.M. to 9:59 A.M. . . . .	351	-
11. 10:00 A.M. to 10:59 A.M. . . . .	448	1
12. 11:00 A.M. to 11:59 A.M. . . . .	516	1
13. Noon to 12:59 P.M. . . . .	509	-
14. 1:00 P.M. to 1:59 P.M. . . . .	548	1
15. 2:00 P.M. to 2:59 P.M. . . . .	624	2
16. 3:00 P.M. to 3:59 P.M. . . . .	957	1
17. 4:00 P.M. to 4:59 P.M. . . . .	1213	2
18. 5:00 P.M. to 5:59 P.M. . . . .	1023	3
19. 6:00 P.M. to 6:59 P.M. . . . .	649	5
20. 7:00 P.M. to 7:59 P.M. . . . .	716	4
21. 8:00 P.M. to 8:59 P.M. . . . .	537	2
22. 9:00 P.M. to 9:59 P.M. . . . .	496	5
23. 10:00 P.M. to 10:59 P.M. . . . .	426	2
24. 11:00 P.M. to 11:59 P.M. . . . .	468	3
25. Not stated . . . . .	25	1
TOTAL ACCIDENTS	12361	43

\*Tables include motor vehicle traffic accidents only.



TABLE XII-G  
ANALYSIS OF TRAFFIC ACCIDENTS\*

<u>BY DAY OF WEEK</u>		
	<u>All Accidents</u>	<u>Fatal Accidents</u>
1. Monday . . . . .	1617	8
2. Tuesday . . . . .	1507	3
3. Wednesday . . . . .	1517	6
4. Thursday . . . . .	1611	3
5. Friday . . . . .	2081	5
6. Saturday . . . . .	2079	10
7. Sunday . . . . .	<u>1949</u>	<u>8</u>
TOTAL ACCIDENTS	12361	43

TABLE XII-H  
ANALYSIS OF TRAFFIC ACCIDENTS\*

<u>BY LIGHT CONDITION</u>		
	<u>All Accidents</u>	<u>Fatal Accidents</u>
1. Daylight . . . . .	6953	9
2. Dusk or dawn . . . . .	371	2
3. Darkness--street lights . . . . .	4831	31
4. Darkness--no street lights . . . . .	97	1
5. Darkness--lighting not stated. . . . .	-	-
6. Not stated . . . . .	<u>109</u>	<u>-</u>
TOTAL ACCIDENTS . . . . .	12361	43

\*Tables include motor vehicle traffic accidents only.



TABLE XII-ITYPE OF VEHICLE

	<u>All Accidents</u>	<u>Fatal Accidents</u>
1. Passenger car . . . . .	20163	43
2. Same--and trailer or house trailer. . . . .	-	-
3. Truck . . . . .	1708	1
4. Truck and trailer . . . . .	129	-
5. Truck tractor and semi-trailer. . . . .	255	1
6. Other truck combinations. . . . .	7	-
7. Taxicab . . . . .	260	2
8. Bus . . . . .	329	1
9. Motorcycle. . . . .	165	-
10. Other vehicle . . . . .	1	-
11. Not stated. . . . .	-	-
TOTAL ACCIDENTS	23017	48
12. Emergency vehicles included in above. . . . .	90	



TABLE XII-J

## ANALYSIS OF TRAFFIC ACCIDENTS

## PEDESTRIAN ACCIDENTS

Pedestrian Actions	Total Pedes- trians	Pedes- trians Killed	Killed and Injured -- Age									Sex	
			0-4	5-9	10-14	15-19	20-24	25-44	45-64	65 & Not over Stated	Male	Female	
1a. Crossing at intersection -- with signal	260	5	7	20	12	20	9	47	88	44	13	142	118
b. Same-against signal	123	3	4	19	8	12	7	12	32	16	13	84	39
c. Same-no signal	276	8	8	31	13	10	9	50	81	61	13	160	116
d. Same-diagonally	33	-	4	3	-	4	2	5	10	4	1	27	6
2. Crossing not at intersection	405	8	67	156	16	11	5	43	57	30	20	271	134
3. Coming from behind parked cars	-	-	-	-	-	-	-	-	-	-	-	-	-
4. Walking in roadway	17	1	-	4	1	4	2	1	3	1	1	14	3
5. Standing in safety zone	11	2	-	1	1	-	-	3	5	1	-	4	7
6. Getting on or off street car	15	-	-	1	-	-	2	4	7	1	-	10	5
7. Getting on or off other vehicle	4	-	-	-	-	-	-	2	1	1	-	1	3
8. Working in roadway	11	-	-	-	-	2	-	6	3	-	-	11	-
9. Playing in roadway	32	-	11	16	4	1	-	-	-	-	-	28	4
10. Hitching on vehicle	3	-	-	1	-	-	-	1	1	-	-	2	1
11. Not in roadway	8	-	-	-	-	3	3	-	2	-	-	4	4
12. Not stated	378	7	44	93	21	9	15	64	65	40	27	251	127
TOTAL PEDESTRIANS	1576	34	145	345	76	76	54	238	355	199	88	1009	567



TABLE XII-KSUMMARY OF ALL TRAFFIC ACCIDENTS REPORTED TO THE POLICEDEPARTMENT FOR TEN YEARS BY MONTH, ENDING DEC. 31, 1950

<u>MONTH</u>	<u>1941</u>	<u>1942</u>	<u>1943</u>	<u>1944</u>	<u>1945</u>	<u>1946</u>	<u>1947</u>	<u>1948</u>	<u>1949</u>	<u>1950</u>
January . . .	1717	1980	1309	941	888	1344	1555	1782	1930	1647
February. . .	1425	1362	830	855	744	1363	1325	1607	1735	1829
March . . . .	1347	1269	794	682	686	1130	1283	1377	1390	1947
April . . . .	1221	986	611	584	627	990	1150	1231	1439	1728
May . . . . .	1570	1201	789	628	678	1096	1357	1403	1485	1688
June. . . . .	1491	1202	749	624	685	1090	1267	1346	1437	1785
July. . . . .	1599	1120	682	557	672	1003	1128	1359	1502	1771
August. . . .	1634	1111	696	616	795	1032	1192	1334	1481	1909
September . .	1739	1159	672	556	949	1100	1433	1339	1537	1730
October . . .	1721	1110	678	672	908	1220	1308	1320	1664	1738
November. . .	1732	1233	704	697	1081	1424	1520	1439	1672	2062
December. . .	2016	1145	793	1154	1700	1597	1666	1892	2375	3455
TOTAL	19212	14878	9307	8566	10413	14389	16184	17429	19647	23289



TABLE XII-LREGISTRATION OF MOTOR VEHICLES1930 up to and including 1950

	Number of Motor Vehicles Licensed in the County of Milwaukee	Number of Motor Vehicles Licensed in the City of Milwaukee
1930	162,099	-
1931	154,243	-
1932	142,159	113,821
1933	138,924	112,446
1934	151,316	122,295
1935	159,583	130,196
1936	179,432	147,322
1937	186,770	153,765
1938	181,587	147,106
1939	187,706	152,119
1940	197,528	161,671
1941	215,624	174,096
1942	180,254	148,543
1943	181,459	145,000*
1944	172,813	140,000*
1945	177,969	145,000*
1946	184,811	148,000*
1947	208,394	160,000*
1948	221,916	170,629
1949	246,717	190,090
1950	264,606	203,067

\*Estimated



OBITUARYOscar J. Digert

Appointed Senior Clerk Stenographer . . . . . January 3, 1923  
 Promoted to Fingerprint Operator . . . . . October 4, 1930  
 Promoted to Supt. Bureau of Identification. . . . . December 8, 1936  
 Died . . . . . March 21, 1950

Alexander Briganske

Appointed Patrolman. . . . . May 1, 1928  
 Died . . . . . March 30, 1950

George Lange

Appointed Patrolman. . . . . December 1, 1927  
 Died . . . . . May 31, 1950



